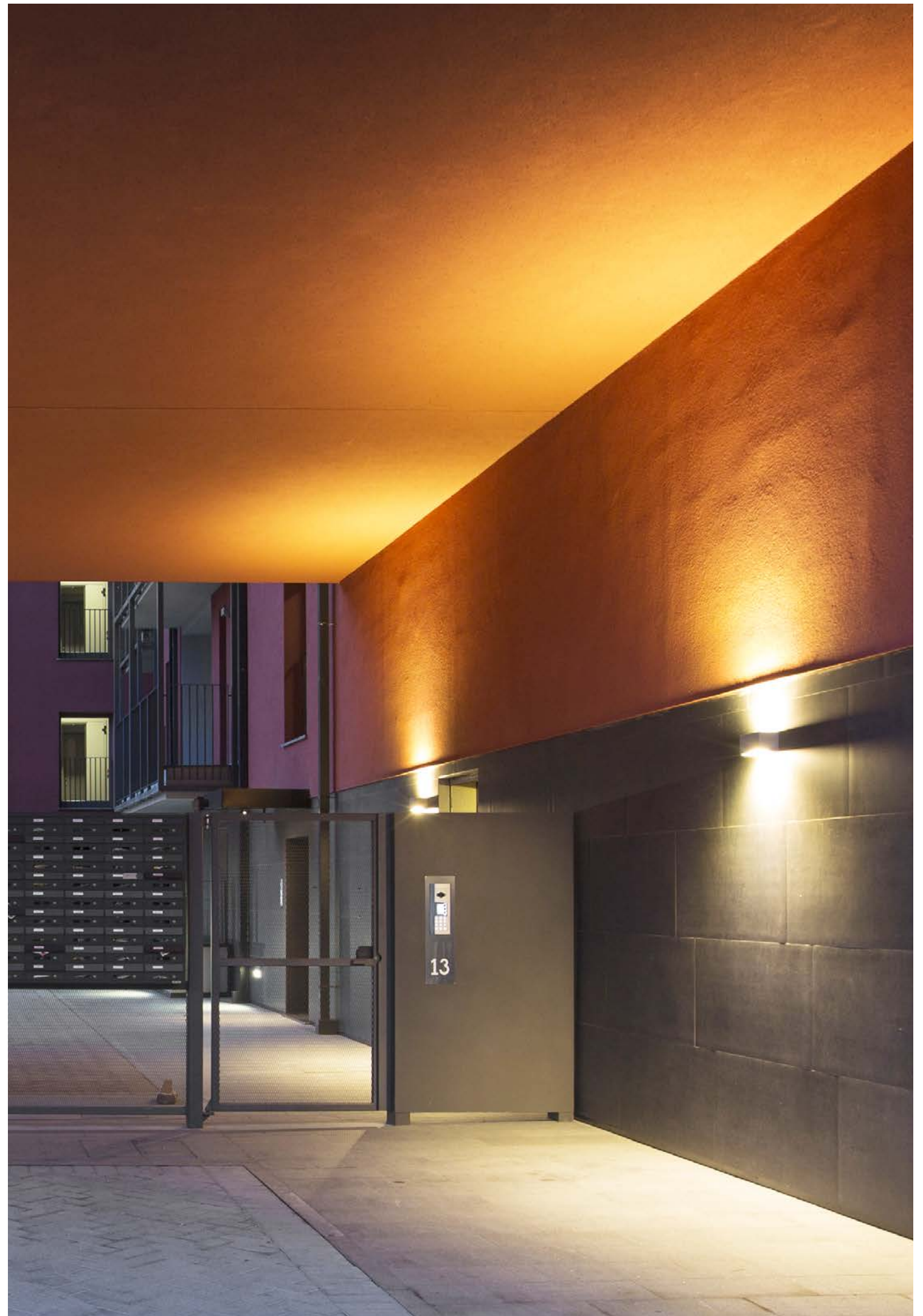


MINI SPECIAL collection





applique

applique downlight floodlight



applique

Mini Special, small parallelepipeds available in different versions for various uses: it is a family of products by minimalist design and pure geometric forms, able to provide grazing light on the walls, ceiling or as projector through mounting bracket. It is available with a single and double window. The product is installed on wall and ceiling by a hidden fixing system with no visible screws.





applique

IP65
IK 055 mm extra-clear glass
transparent / sandblasted

200 x100 x 100 mm



downlight

IP65
IK 055 mm extra-clear glass
transparent / sandblasted

200 x100 x 100 mm



floodlight

IP65
IK 055 mm extra-clear glass
transparent / sandblasted

200 x100 x 100 mm



WHITE LED

3000K CRI>80
220-240V 0/50/60Hz ⊕2700K / 4000K
available on request10W | 910 lm (*)
1 opening
transparent glass100°
670 cd/klm10W | 785 lm (*)
1 opening
sandblasted glass80° diffuse
730 cd/klm

WHITE LED

3000K CRI>80
220-240V 0/50/60Hz ⊕2700K / 4000K
available on request21W | 1770 lm (*)
2 openings
transparent glass2 x 100°
335 cd/klm21W | 1640 lm (*)
2 openings
sandblasted glass2 x 80° diffuse
365 cd/klm

WHITE LED

3000K CRI>70
220-240V 0/50/60Hz ⊕2700K / 4000K
available on request19,5W | 1600 lm (*)
1 opening
asymmetrical

490 cd/klm

details

Die-cast body and flange made of aluminium alloy with very low copper content. No visible screws. The product is subjected to galvanic anodizing treatment divided into distinct phases: mechanical satin finishing, surface degreasing, anodic oxidation and finally fixing. Subsequently the product is painted by performing a double pass in-line process, which allows you to generate a single thick protective layer which then generates barrier against atmospheric agents and UV rays. This allows to achieve corrosion resistance performance in salt spray. Pre-treatment with atmospheric pressure plasma is carried out on the surface before gluing of the diffuser on Platek products.

standard finishes



.06 grey

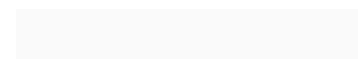


.08 anthracite

on request finishes



.01 black



.02 white



.07 corten



.09 bronze

(*) Real Data



downlight



WHITE LED
 3000K CRI>80
 220-240V 0/50/60Hz ⊕
 2700K / 4000K
 available on request



10W | 725 lm (*)
 1 opening
 transparent glass



100°
 495 cd/klm



10W | 770 lm (*)
 1 opening
 sandblasted glass



90° diffuse
 450 cd/klm

floodlight



WHITE LED
 3000K CRI>70
 220-240V 0/50/60Hz ⊕
 2700K / 4000K
 available on request



18W | 1780 lm (*)
 asymmetrical
 transparent glass



490 cd/klm



10W | 770 lm (*)
 wide
 sandblasted glass



90°
 450 cd/klm

(*) Real Data