

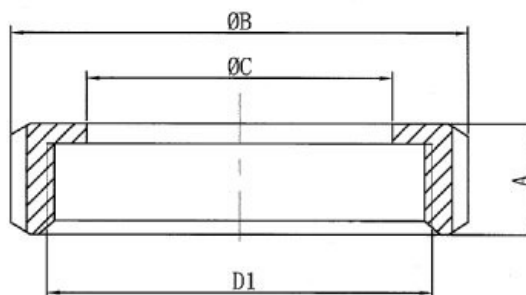
**ARTICULO: 2954**  
**Tuerca para Unión DIN 11851 (Línea Sanitaria)**  
***Nut for Union DIN 11851 (Sanitary Line)***

**Características**

1. Construcción en Acero Inox. 1.4308 (AISI 304).
2. Rosca según norma DIN 405.
3. Terminación superficial externa  $Ra \leq 3.2 \mu m$ .
4. Presión de trabajo máxima 10 bar.

**Features**

1. Made by Stainless steel 1.4308 (AISI 304).
2. Thread according to Std. DIN 405.
3. External surface finished  $Ra \leq 3.2 \mu m$ .
4. Max. Working pressure 10 bar.



**DIMENSIONES GENERALES / GENERAL DIMENSIONS**

Ref.	Medida / Size	DN	Dimensiones / Dimensions (mm)					Peso / Weight (Kg)
			A	B	C	D1	Ranuras / Grooves	
2954 04	1/2"	15	18	44	25	RD34 x 1/8"	4	0.080
2954 05	3/4"	20	20	54	31	RD44 x 1/6"	4	0.130
2954 06	1"	25	21	63	36	RD52 x 1/6"	4	0.172
2954 07	1 1/4"	32	21	70	42	RD58 x 1/6"	4	0.209
2954 08	1 1/2"	40	21	78	49	RD65 x 1/6"	4	0.250
2954 09	2"	50	22	92	62	RD78 x 1/6"	4	0.338
2954 10	2 1/2"	65	25	112	80	RD95 x 1/6"	6	0.523
2954 11	3"	80	29	127	94	RD110 x 1/4"	6	0.728
2954 12	4"	100	31	148	115	RD130 x 1/4"	6	0.990