

## BRASS SOLENOID VALVE 87

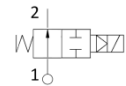


- Coil size 33 mm
- 2/2 way Normally Open
- Pilot operated
- Multi purpose
- ED 100%

### Technical data










Min differential working pressure	0,3 bar			
Body material	Brass			
Seal material	NBR – FPM – EPDM - EPDM KTW			
Tube material	Brass			
Working fluids	Air, water, light oils			
Electrical connect.	6,3 x 0,8 fast-on terminal			
Insulation class	H			
220-230VAC 50-60Hz Approvals: CE; VDE	Power (VA)		15	
100-120VAC 60Hz Approvals: CE; UL				
12-24 VDC Approvals: CE	Power (W)		16	
Max temperature	Fluids			
	NBR	FPM	EPDM KTW	EPDM
	90 °C	150 °C	130 °C	130 °C
	Ambient			
	+80 °C			

### Performance



Pipes IN - OUT	Orifice Ø mm	Flow m3/h	MOPD (bar)		Code
			AC	DC	
G 3/8	10	1.86	10	10	8713
G 1/2	12	2.10	10	10	8714
G3/4	20	5.70	10	10	8715
G 1	25	9.60	10	10	8716
G1 ¼	32	22.00	10	10	8717
G 1 ½	39	27.00	10	10	8718
G 2	51	35.00	10	10	8719
G 2 ½	65	63.00	10	10	8720
G 3	75	83.00	10	10	8721
3/8 NPT	12	2.10	10	10	8723
1/2 NPT	12	2.10	10	10	8724
3/4 NPT	20	5.70	10	10	8725
1 NPT	25	9.60	10	10	8726

**Hydraulic connection**

<p><b>G 3/8 – 3/8 NPT</b> Series 8713 – 8723</p> 	<p><b>G 1/2 – 1/2 NPT</b> Series 8714 – 8724</p> 	<p><b>G 3/4 – 3/4 NPT</b> Series 8715 – 8725</p> 	<p><b>G 1 – 1 NPT</b> Series 8716 – 8726</p> 
<p><b>G 1 ¼</b> Series 8717</p> 	<p><b>G 1 ½</b> Series 8618</p> 	<p><b>G 2</b> Series 8719</p> 	
<p><b>G 2 ½</b> Series 8720</p> 	<p><b>G 3</b> Series 8721</p> 		

**Availability coil orientation**

