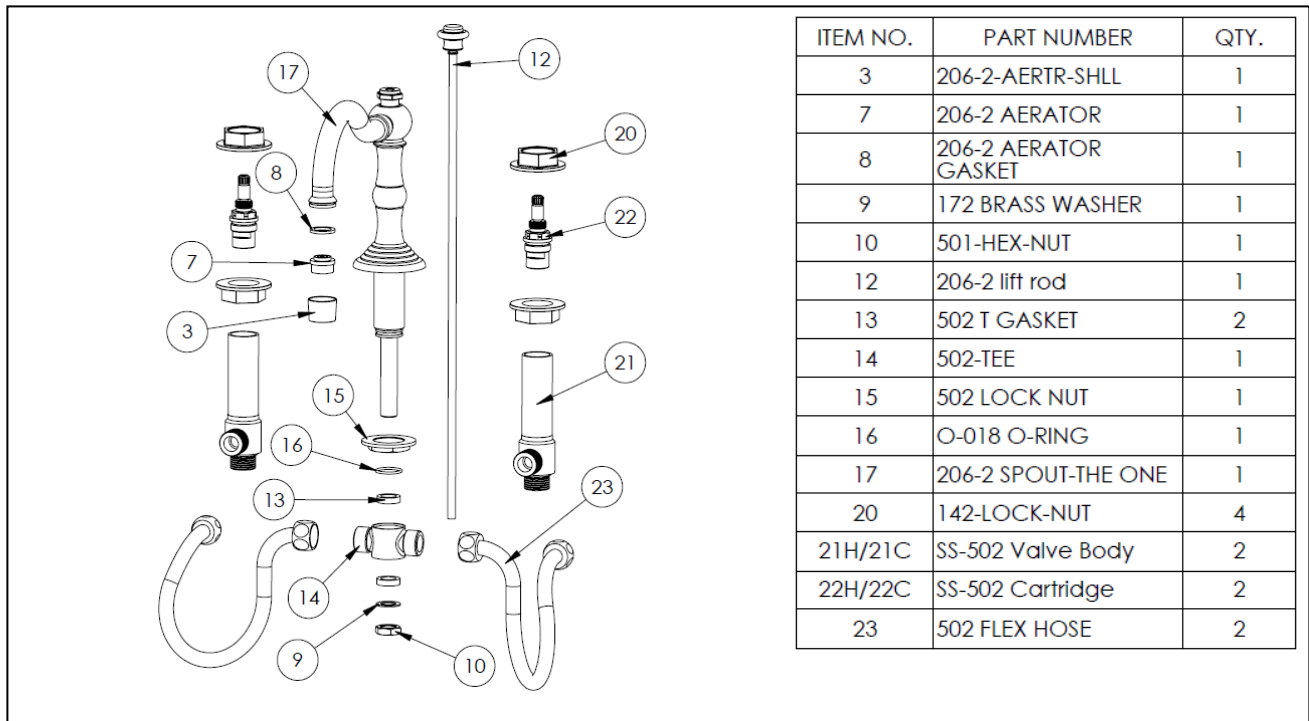
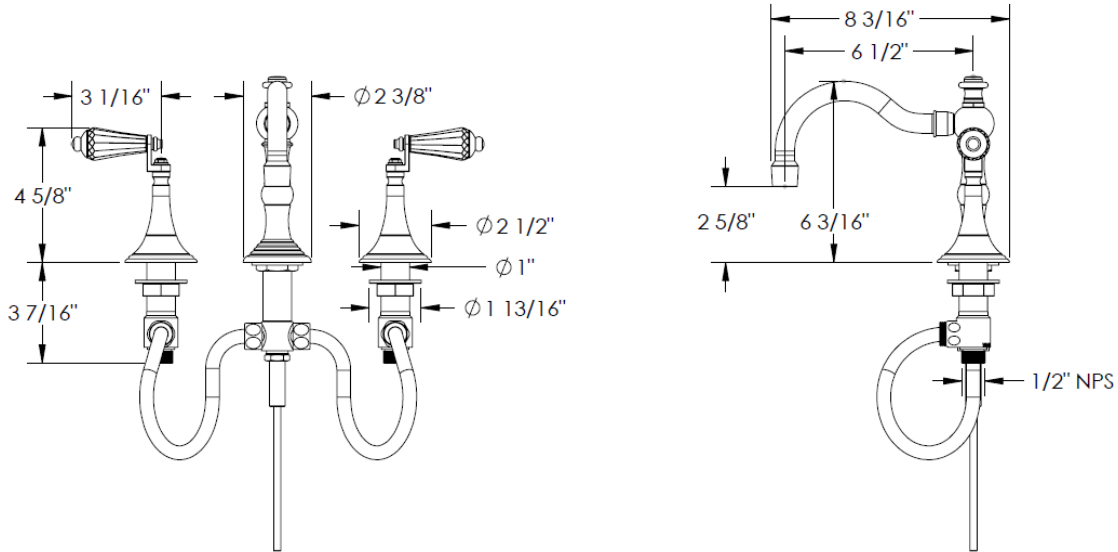


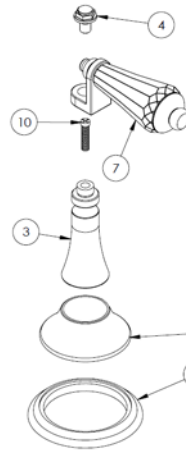
FEATURES

- ¼ turn washerless ceramic disc valve cartridges
- Flexible hose connection for 8" to 16" spread installations
- Flow rate 1.5 gpm (5.7 lpm) maximum flow rate
- Solid brass construction
- Listed by IAPMO, CSA, NSF, and other municipalities
- Warranty:
 - Limited lifetime warranty (residential use)
 - One year (commercial use)
- Shipping weight (lbs.) 10
- Shipping dimensions (in.): 29x12x4

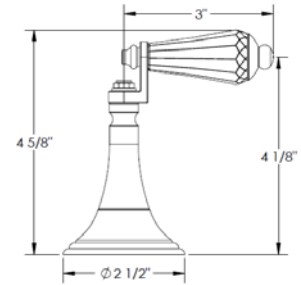


HANDLE TRIMS

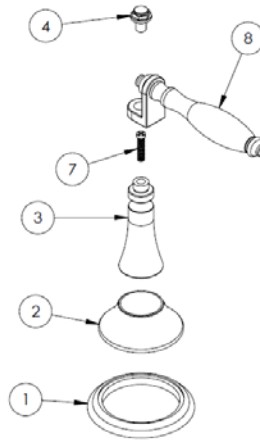
Diamond (Code: U3)



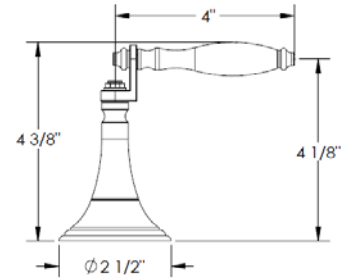
ITEM NO.	PART NUMBER	QTY.
1	U5-ESC-RING	1
2	U5-ESC	1
3	U5-POST	1
4	U5-POST-CAP	1
7	SW-CRSTL-LVR-INSRT	1
10	F-POST-SCRW	1



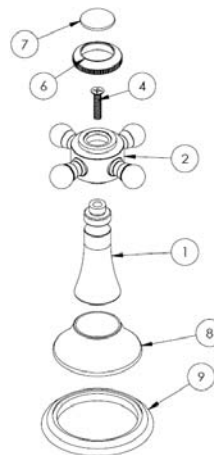
Emporium (Code: U5)



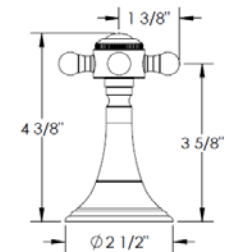
ITEM NO.	PART NUMBER	QTY.
1	U5-ESC-RING	1
2	U5-ESC	1
3	U5-POST	1
4	U5-POST-CAP	1
7	F-POST-SCRW	1
8	U5-LVR-INSRT	1



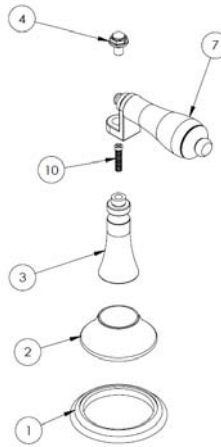
Povincial (Code: U6)



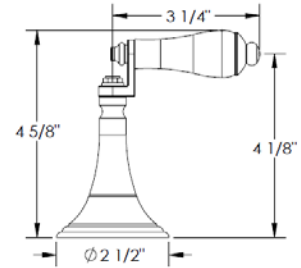
ITEM NO.	PART NUMBER	QTY.
1	U5-POST	1
2	V-POST	1
4	CR-FHM1 0.164-32x0.75x0.75-S	1
6	X-CAP-RING	1
7	X-PRCLN-INSRT-PLN	1
8	U5-ESC	1
9	U5-ESC-RING	1



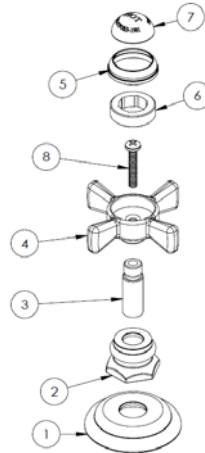
Regal (Code: U7)



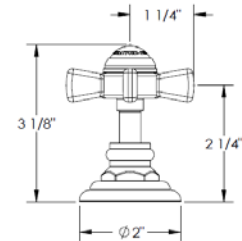
ITEM NO.	PART NUMBER	QTY.
1	U5-ESC-RING	1
2	U5-ESC	1
3	U5-POST	1
4	U5-POST-CAP	1
7	S3-PRCLN-LVR-INSRT	1
10	F-POST-SCRW	1



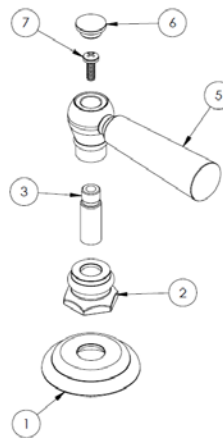
Preston (Code: S1)



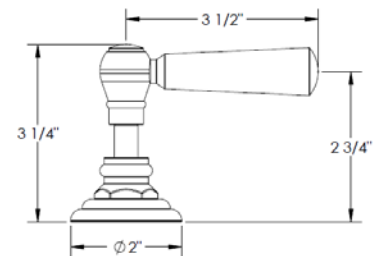
ITEM NO.	PART NUMBER	QTY.
1	S1-ESC	1
2	S1-ESC-NUT	1
3	S1-STEM	1
4	S1-HNDL-(COLD/HOT)	1
5	S1-CAP-RING	1
6	S1-CAP-ADAP	1
7	S1-PRCLN-INSRT-(PLN/COLD/HOT)	1
8	CR-PHMS 0.164-32x1x1-S	1



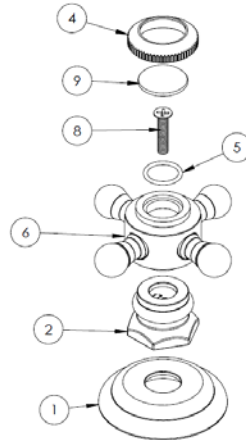
Nottingham (Code: S1A)



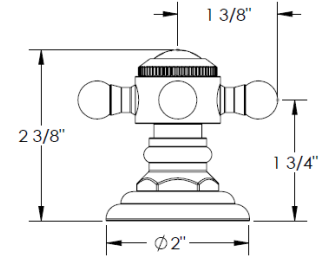
ITEM NO.	PART NUMBER	QTY.
1	S1-ESC	1
2	S1-ESC-NUT	1
3	S1-STEM	1
5	S1A-LVR	1
6	A-POST-CAP	1
7	CR-PHMS 0.164-32x0.5x0.5-S	1



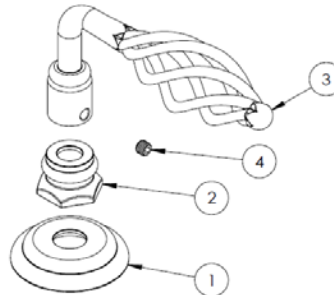
Wales (Code: V)



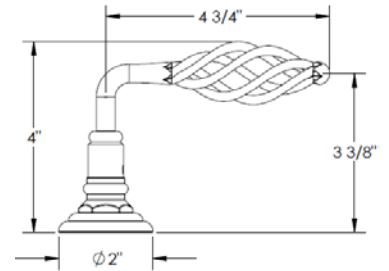
ITEM NO.	PART NUMBER	QTY.
1	S1-ESC	1
2	S1-ESC-NUT	1
4	X-CAP-RING	1
5	AS568 - 014	1
6	V-POST	1
8	CR-FHM1 0.164-32x0.75x0.75-S	1
9	X-PRCLN-INSRT-PLN	1



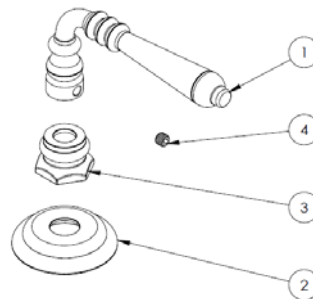
Clery (Code: BV05)



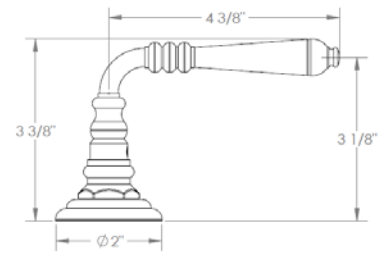
ITEM NO.	DESCRIPTION	QTY.
1	S1-ESC	1
2	S1-ESC-NUT	1
3	BV05-LVR	1
4	B18.3.6M - M6 x 1 x 5 Hex Socket Type I Cup Pt. SS -S	1



Languedoc (Code: BV13)



ITEM NO.	PART NUMBER	QTY.
1	BV13-LVR	1
2	S1-ESC	1
3	S1-ESC-NUT	1
4	B18.3.6M - M6 x 1 x 5 Hex Socket Type I Cup Pt. SS -S	1



IMPORTANT INSTALLATION INFORMATION

- USE TEFLON TAPE OR PIPE SEALANT FOR THREADED CONNECTIONS
- DO NOT USE PLUMBER'S PUTTY ON ANY OF THE BRASS COMPONENTS
This will cause the finish to tarnish and void the warranty. A non-corrosive Alkoxy Silicone is recommended.
- DURING SWEATING OF LINES DO NOT OVERHEAT CASTING
Overheating may cause damage to internal mechanism
- COPPER ADAPTORS MAY BE REQUIRED TO COMPLETE YOUR INSTALLATION

For technical support, please call 718-257-2800

Rev. 1/1