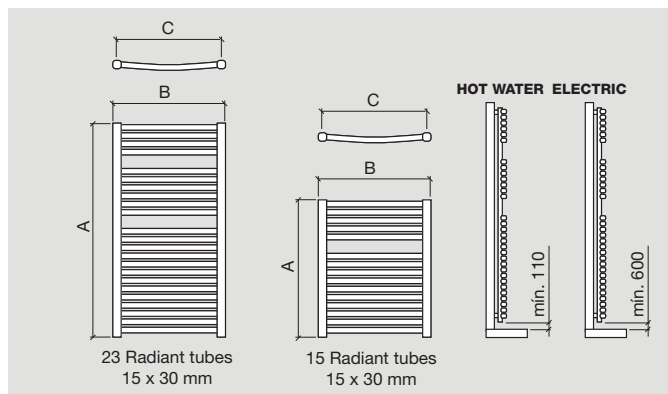


## CUENCA

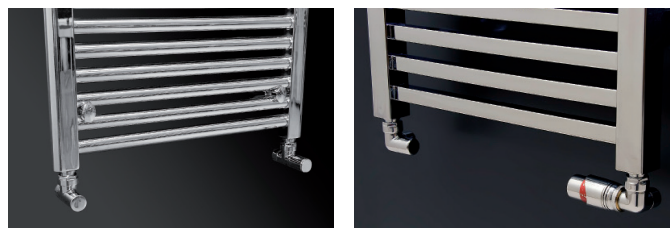
- Chrome steel tubes with white “epoxy”, with no joints between them to guarantee they are watertight.
- Valid for the sanitary hot water supply, or for the electric system, filled with a thermo-fluid of high thermal inertia, with monotube reinforced resistance fitted with safety limiter and with a thermostat included.
- Always fitted to the wall in the vertical position using three supports as shown in the photograph, and in accordance with the distance to the floor and wall recommended in the diagram.
- The bleed valve is always situated on the top part of the radiator/heated towel rail.
- It is important to check the temperature of the radiator/heated towel rail to prevent any risk for children.



Detail of Dry Towel Radiator of 1180 H with 23 radiant tubes Ø 15 mm

### HOT WATER

Chrome valve and lockshield valve, universal, suitable for any radiator on the market, includes set of chrome nuts for connection to copper piping of 15m/m or crosslinked or multilayer polyethylene piping with a diameter of 16 m/m



SYSTEM	RESISTANCE WATIOS	SIZE A - B - C	COLOUR	POWER wat/h - kcal/h	COD	€
Valid for hot water heating system	---	800 x 500 / 450	Chrome	275-237	14323	307
	---	1180 x 500 / 450	Chrome	416-358	14324	425
Set of Valve and Flow control detentor - copper chromed					14361	53
Set of Valve and thermostatic control detentor					16301	108

### ELECTRIC THERMOSTAT

- Connection to electricity mains supply of 220/230 v. using a cable that must not be in contact with the tubes. Do not place the plug behind the radiator/heated towel rail.
- IP-44 rating and does not need earthing (Class II)
- Turbo function button: functions for two hours at maximum power.
- Room temperature sensor.
- Heating power as shown in the table below.
- The thermostat regulates the temperature from a minimum of 7 ° up to a maximum of 30 °.
- Weekly programming and comfort, nocturnal and anti-frost mode and pilot wire.
- Bi-colour LED indicating functioning status.
- Functional design in grey or white



SYSTEM	RESISTANCE WATIOS	SIZE A - B - C	COULEUR	POWER WAT/H - KCAL/H	COD	€
Electric thermostat	350	800 x 500 / 450	Chrome	275-237	24559	672
	650	1180 x 500 / 450	Chrome	416-358	24560	835