

INSTALLATION INSTRUCTIONS

SpaceLogic™ GLASS TOUCH PANEL

REFERENCE:

LSSMBU02Nx*
LSSMBU03Nx*
LSSMBU04Nx*
LSSMBU06Nx*
LSSMBU09Nx*
LSSMBU10Nx*
LSSMBU12Nx*
LSSMTH07Nx*

LSSMTH08Nx*
LSSMDB01Nx
LSSMDN01Nx*
LSSMDP01Nx*
LSSMDP01Rx
LSSMKH03Nx*
LSSMKH03Rx*

x = P: Product, x= S: Mock-up Sample, and * means UL version available with suffix _A
_DEMO means pre-configured version

REFERENCE

DESCRIPTION

REFERENCE

DESCRIPTION



LSSMBU06Nx

GLASS PANEL, MODUS,
6 BUTTONS



LSSMDN01Nx

GLASS DOOR PANEL,
MODBUS,
NUMBER



LSSMBU09Nx

GLASS PANEL, MODUS,
9 BUTTONS



LSSMDP01Nx

GLASS DOOR PANEL,
MODBUS, NUMBER,
PRESENCE



LSSMBU10Nx*

GLASS PANEL, MODUS,
10 BUTTONS



LSSMDP01Rx

GLASS DOOR PANEL,
MODBUS, NUMBER,
PRESENCE, RFID



LSSMBU12Nx

GLASS PANEL, MODUS,
12 BUTTONS



LSSMTH07Nx

GLASS THERMOSTAT,
MODBUS, 7 BUTTONS

REFERENCE

DESCRIPTION



LSSMBU02Nx

GLASS PANEL, MODUS,
2 BUTTONS



LSSMKH03Nx

GLASS KEYCARD
HOLDER, MODBUS



LSSMTH08Nx

GLASS THERMOSTAT,
MODBUS, 8 BUTTONS



LSSMBU03Nx

GLASS PANEL, MODUS,
3 BUTTONS



LSSMKH03Rx

GLASS KEYCARD
HOLDER, MODBUS,
RFID



LSSMBU04Nx

GLASS PANEL, MODUS,
4 BUTTONS



LSSMDB01Nx

GLASS DOOR PANEL,
MODBUS

Dimensions

Dimensions	105 x 105 mm (not available for UL version)	LSSMBU02NP, LSSMBU03NP, LSSMBU04NP, LSSMBU06NP, LSSMBU09NP, LSSMBU12NP, LSSMTH07NP, LSSMDB01NP, LSSMDN01NP, LSSMKH03NP, LSSMKH03RP
	95 x 95 mm	
	160 x 105 mm (not available for UL version) 160 x 95 mm	LSSMBU10NP, LSSMTH08NP
	160 x 120 mm	LSSMDP01NP, LSSMDP01RP

Technical Specifications

Front cover options	Glass surface with customizable background color (Typical colours --- silver, champagne gold, white and black)
Supply voltage	24 V DC
Current consumption	30 mA
Physical interface	RS485
Communication protocols	Modbus™
RFID Frequency	13.56 MHz
Temperature tolerance	± 0.5° C / ±0.9° F
Indicator backlight	Typically available as follows, and customisable:
	Black glass: Available colours: white, amber, blue, light green, red
	White glass: Available colours: amber, blue, light green, red
	Silver glass: Available colours: white, amber, blue, light green, red
Mounting	Snap-in magnetic mounting
	Wall box
Warm up time	Typical 20 seconds
Operating temperature	0 to 45° C / 32° to 113° F
Storage temperature	0 to +60° C / 32 to 140° F
Operating humidity	10% - 95% RH, non-condensing
IP Class	IP20

Features

SpaceLogic Glass Touch Panel Modbus is a low-voltage switch panel that communicates with Schneider Electric room controllers through Modbus. It allows the user to control lights, dimmers, curtains, and air conditioning from the inside of a hotel room.

Safety, Installation and Operation Requirements



HAZARD OF ELECTRIC SHOCK, EXPLOSION OR ARC FLASH

- This product must only be installed and serviced by appropriately qualified and/or licenced electrical personnel.
- Isolate the electrical supply before doing any work on this product.
- Ensure that the product has been correctly installed and tested for safe operation before reconnecting the electrical supply.

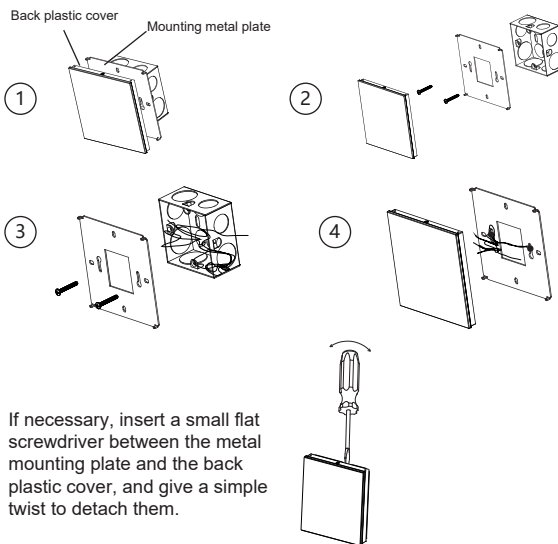
Failure to follow these instructions will result in death or serious injury.



INSTALLATION HAZARD

Make sure that the wall box for the glass touch panel is at least 35mm deep.

Failure to follow these instructions can result in injury or equipment damage.



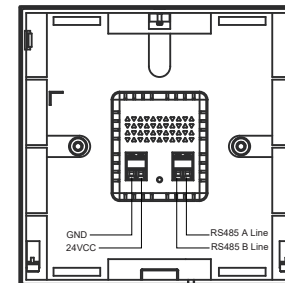
If necessary, insert a small flat screwdriver between the metal mounting plate and the back plastic cover, and give a simple twist to detach them.

Installation Steps

- 1 Separate the mounting metal plate and wall box from the glass touch panel.
- 2 Unscrew the 2x mounting screws from the mounting metal plate. Install the attached wall box or use the existing wall box.
- 3 Screw the mounting metal plate to the installed wall box and pull out the power wires (24 V/COM) and Modbus RS485 wires.
- 4 Connect the Modbus RS485 and power wires to the connectors according to the connection diagram on the product.
- 5 Push the glass touch panel toward the mounting metal plate to engage the side clips.

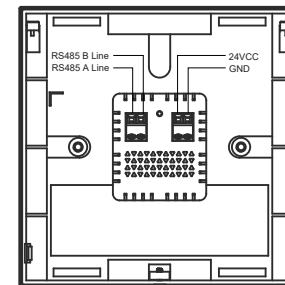
Wiring Diagrams

TERMINATION DIAGRAM-RS485 VERSION FOR



LSSMBU02NP
LSSMBU03NP
LSSMBU04NP
LSSMBU06NP
LSSMBU09NP
LSSMBU12NP
LSSMTH07NP
LSSMDB01NP
LSSMDN01NP
LSSMBU10NP
LSSMTH08NP
LSSMDP01NP
LSSMDP1RP

TERMINATION DIAGRAM-RS485 VERSION FOR



LSSMKH03NP
LSSMKH03RP

Technical Support and Warranty

For technical or warranty queries, contact the Customer Care Centre in your country:

www.se.com/contact