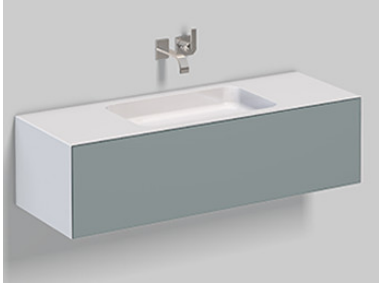


A³form

Technical data sheet



Washplaces

WP.Folio6

Article number: 5157510000

Design partner: busalt design

Features

Description	WP.Folio6
Article number	5157510000
Standard colour	White / Grey Fossile
Special surfaces	-
Construction	without faucet hole, without overflow
Special versions	with overflow
Dimensions	49 3/8 × 17 3/4 × 13 3/4"
Material	Glazed steel / Silk-matt finish
Net weight	124.56 lbs
Installation	for wall connection
Accessoires	Drawer divider FU.H358.1, Drawer divider FU.H358.2, Tissue box FU.TI1, Tidying box FU.BX1, Drawer divider FU.BX2, Shelf for cosmetic articles FU.TB6
Faucet information	Optimum point of impact approx. 5 3/8 – 6 3/4" from rear edge of basin.

Faucets with a vertical outlet and an aerator provide the optimum flow of water onto the surface below (angle of impact: 90°).



Text for invitation to tender

Washplace, rectangular, 49 3/8 × 17 3/4", height 13 3/4", rectangular basin without faucet hole, without overflow, laterally circumferential white glazed washstand cover, handle-less base cabinet with push to open, full depth drawer, silk-matt finish furn

Brand: Alape

Model: WP.Folio6