



PRODUCT SHEET

Septembre Lounge Table
by Theresa Rand

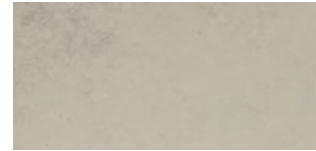
Septembre Lounge Table

BY THERESA RAND

Wooden base table with grey Ataija Azul marble or black ash top.

PRODUCT OPTIONS

TABLETOP



ATAÍJA AZUL MARBLE



BLACK PAINTED ASH

ASH BASE



BLACK STAINED ASH



BLACK PAINTED ASH

Septembre Coffee Table, Black Stained Ash / Ataija Azul marble, by Theresa Rand



Septembre Lounge Table

BY THERESA RAND

TECHNICAL SPECIFICATIONS

PRODUCT TYPE
Lounge table

ENVIRONMENT
Indoor

DIMENSIONS
H: 35 cm / 13,8"
L: 130 cm / 51,2"
W: 67 cm / 26,4"

PRODUCTION PROCESS
Tabletop is made from CNC milled MDF with oak veneer on top and edges or marble. Base is made from solid ash and turned solid ash, tapped together.

COLOUR
Black ash (RAL 9005)
Black stained ash / Grey marble

GLOSS
N / A

MATERIALS
Black stained solid ash, black stained ash veneer, MDF and Ataija Azul marble or painted solid ash, painted ash veneer and MDF.

WEIGHT
Black ash: 15,3 kg / 34,2 lb
Black stained ash / Grey marble: 37,4 kg / 82,5 lb

TEST
N / A

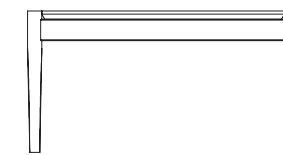
CERTIFICATIONS
N / A

PACKAGING TYPE
Brown box

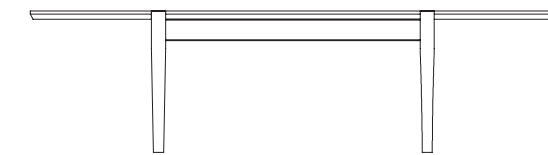
PACKAGING MEASUREMENTS (H x W x D)
41 cm x 83 cm x 142 cm / 16,1" x 32,7" x 56"

COLLI
1

MATERIALS & MAINTENANCE
Please visit [menuspace.com](https://www.menuspace.com) for materials and care and maintenance instructions.



W: 67 cm / 26,4"



L: 130 cm / 51,2"

H: 35 cm / 13,8"