

outdoor

Nido Hand-woven right side module / módulo lateral dcho. tejido

Javier Pastor 2010/2019

C271 T

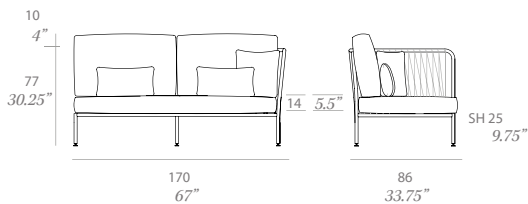


Module made of stainless steel tube, and finished with polyester powder. Hand-woven finish with high resistance rope 24 mm/ 0.94" wide. Possibility of creation a wide variety of layouts thanks to the modularity of its elements.

1 loose cushion 17.75"x 17.75" + 2 loose cushions 19.75"x 12.5" included.

Módulo fabricado en tubo de acero inoxidable, con acabado en pintura de polvo de poliéster. Acabado tejido mediante cuerda trenzada de alta resistencia de 24 mm de sección. Posibilidad de realizar una gran variedad de composiciones gracias a la modularidad de sus elementos.

1 cojín decorativo de 45x45 cm + 2 cojines decorativos de 50x32 cm incluidos.



Shipment details

Qty	1 module (1 box)
Volume	1,33 m3 / 47 ft3
Gross weight	55 kg / 121 lb
Net weight	48 kg / 106 lb
Item dimensions (width x depth x height)	170 x 86 x 77 cm 67" x 33.75" x 30.25"
COM (1, 40 - 1,50 m / 54"-59")	cushions: 4 m / 4.4 yd loose cushions: 1,5 m / 1.7 yd

frame / estructura

metallic finishes / metales



100 white



102 FT light grey
fine textured



111 FT graphite
fine textured



108 FT oxide
fine textured



109 FT champagne
fine textured



110 FT bronze
fine textured



113 FT sage
fine textured

outdoor

rope / cuerda

polyester rope - 24 mm / 0.94" wide



509 taupe



510 SPK
orange



511 SPK
dark orange



513 SPK
oxide



501 black

polypropylene rope - 24 mm / 0.94" wide



520 SPK
sand



522 SPK
concrete



524 SPK
ivy



526 SPK
turquoise

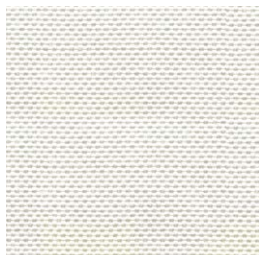


527 forest
green

outdoor

cushions / confección

group 11 - natté Sunbrella®



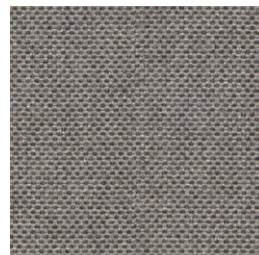
natté white



natté canvas



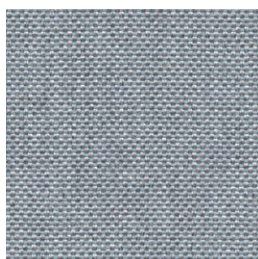
natté taupe chalk



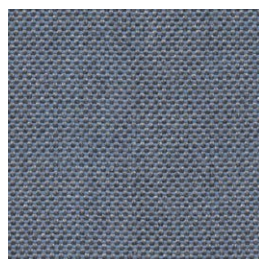
natté carbon beige



natté dark taupe



natté frosty chiné



natté carbon sky

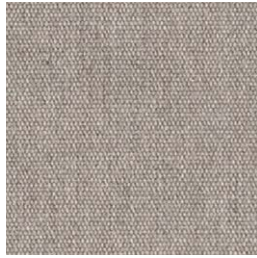
outdoor

cushions / confección

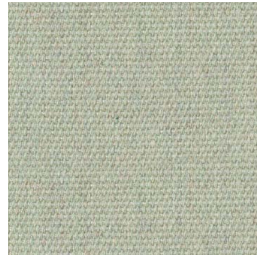
group 12 - heritage Sunbrella®



heritage papyrus



heritage ash



heritage moss



heritage leaf

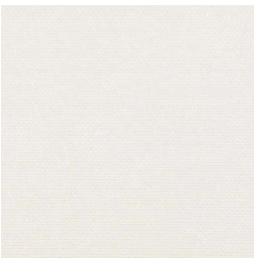


heritage pumpkin

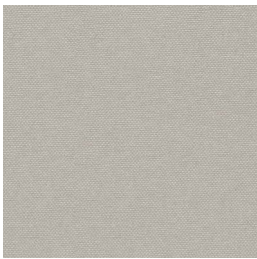


heritage garnet

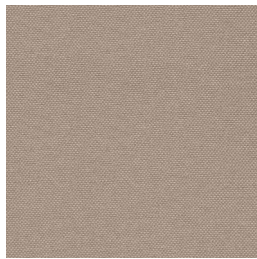
group 12 - silvertex™



silvertex ice



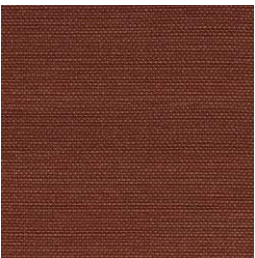
silvertex macadamia



silvertex sandstone



silvertex taupe



silvertex umber



silvertex teal



silvertex citrus

expormim

Expormim S.A.
Pol. Ind. Jaime I
46640 Moixent (Valencia) Spain
+34 962 295 144/5
export@expormim.com
www.expormim.com

Expormim USA LLC
(212) 204-8572
usa@expormim.com
www.expormim.com

5/7

outdoor

cushions / confección

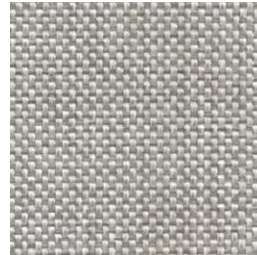
group 12 - dolce Crevin®



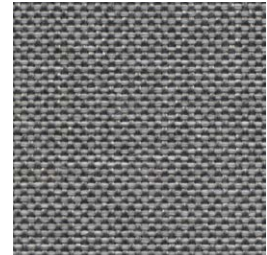
dolce 07



dolce 16



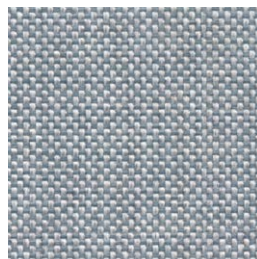
dolce 80



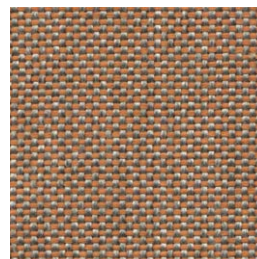
dolce 51



dolce 53



dolce 43



dolce 24

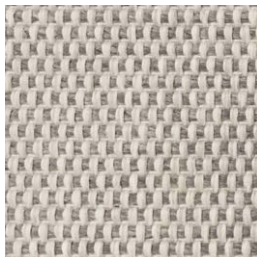


dolce 30

group 12 - strada Crevin®



strada 07



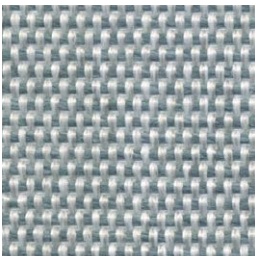
strada 75



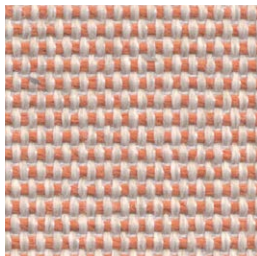
strada 51



strada 83



strada 43



strada 29



strada 32

expormim

Expormim S.A.
Pol. Ind. Jaime I
46640 Moixent (Valencia) Spain
+34 962 295 144/5
export@expormim.com
www.expormim.com

Expormim USA LLC
(212) 204-8572
usa@expormim.com
www.expormim.com

6/7

outdoor

cushions / confección

group 13 - bora bora Crevin®



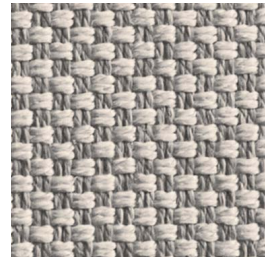
bora bora 99



bora bora 07



bora bora 08



bora bora 11

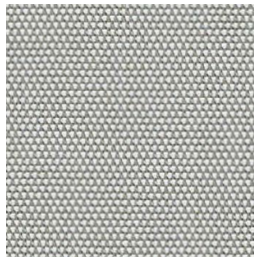


bora bora 42

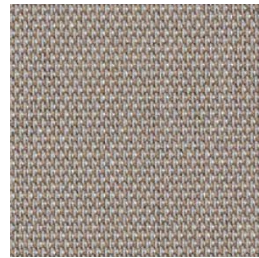


bora bora 47

group 13 - sling Sunbrella®



sling sailing seagull



sling sailing space



sling logan graphite

expormim

Expormim S.A.
Pol. Ind. Jaime I
46640 Moixent (Valencia) Spain
+34 962 295 144/5
export@expormim.com
www.expormim.com

Expormim USA LLC
(212) 204-8572
usa@expormim.com
www.expormim.com

7/7