

DATA SHEET- Light

BOREAL 700

Measurements (width x height x depth mm)

700x61x35 mm

Materials - Finishes

Translucent polycarbonate body with shiny effect steel details.

Net weight: 0,213 Kg

Packaging

Packaging measurements: 715x75x45

Gross weight: 0,273 Kg

Packaging components

1 light

1 connection box

2 HI



Fastening type

Integrated tab for moon / mirror anchor

Remarks

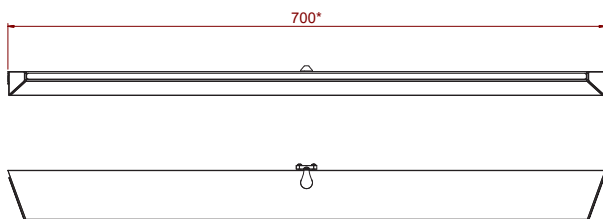
Cable length 350 mm.

Direct connection to alternating current.

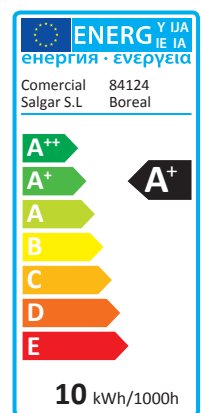
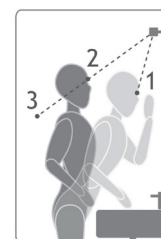
General features

Typology	LED	Lamp useful life	36.000 h.
Lamp holder	LED	Luminous flux	1217
Energy classification	A +	Color temperature (K)	5700
Insulation class	IP44	Classification color temperature	Hot
Protection level	CII		Neutral
Power	10 W		Cold
Nominal voltage	230 V		

Croquis (medidas en mm)



	luxes
1	1500 lx
2	599 lx
3	205 lx



* ± 2 mm.