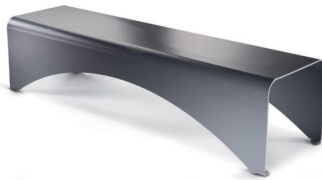


BENCHES: PAPER



| Categories: [BENCHES](#), [URBAN DESIGN](#)

PRODUCT DESCRIPTION

Designer: [Hangar Design Group](#)

The bench PAPER is made in steel, 60/10 thickness. The bench has 2 sheets welded together through a continuous welding, which creates the typical wave shape. The 90° bending of the sheet creates the feet of the bench with holes (11 mm diam.) for the fixing to the ground through specific bolts (not provided).

For the realization of this product made in Italy, Steel EN10111DD11 is used and later treated with a cycle of sandblasting, cataphoresis and powder coating. Such cycle is meant to guarantee the protection of the painted products, in an environment of C4 corrosion class, as requested by the UNI regulations EN ISO 12944-2. The products are eventually polyester-powder coated with RAL colours at choice.

As an alternative to steel EN10111DD11, the production in corten is also available, on demand. In this case the material is treated with a specific oxidation process.

Max dimensions:

Height of seat: **450 mm**
Width of seat: **1800 mm**
Depth of the seat: **500 mm**
Weight of steel: **88,5 Kg**

Material: [steel](#)



GALLERY IMAGES

