

Collection

ELIO

Article

E0700_1

Description

Free standing bath filler spout with 3 Holes bath filler with overflow outlet connection diverter and shower kit

Box Dimensions

1105x400x150 mm

Weight

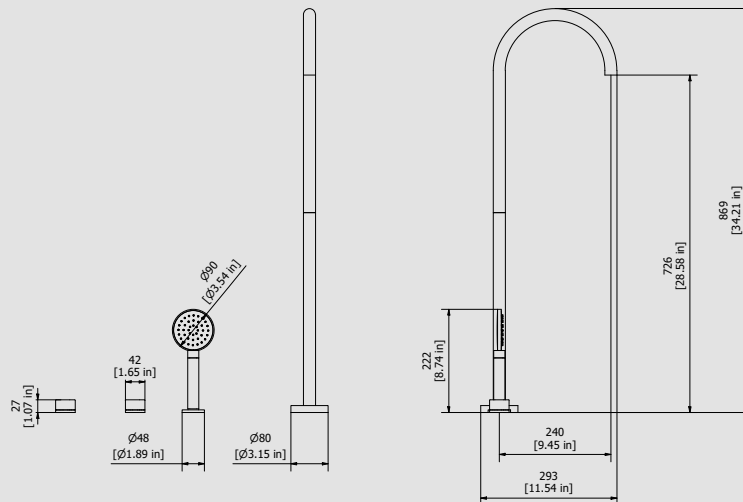
5.9 kg

Finishes

- **CC**
CHROME
- **PL**
PLATINUM
- **SS**
BRUSHED
NICKEL
- **ON**
NATURAL
BRASS
- **BO**
MATT
WHITE
- **NP**
MATT
BLACK
- **CF**
BLACK
CHROME
- **CS**
BRUSHED
BLACK
CHROME
- **II**
PALE
GOLD
- **IS**
BRUSHED
PALE GOLD
- **RS**
ROSE
GOLD
- **SR**
BRUSHED
ROSE GOLD
- **OO**
GOLD
- **OS**
BRUSHED
GOLD
- **RR**
ANTIQUÉ
COPPER
- **BB**
ANTIQUÉ
BRONZE



Dimensions



Cartridge

Ø35 ceramic cartridge

Threaded fitting

Treaded fitting G1/2" male

Aerator

M16.5x1

Flow Rate (+/-10%)

1 BAR	2 BAR	3 BAR
13.2 l/m	19.1 l/m	23.6 l/m

Production

Main body is a machined from a solid pieces

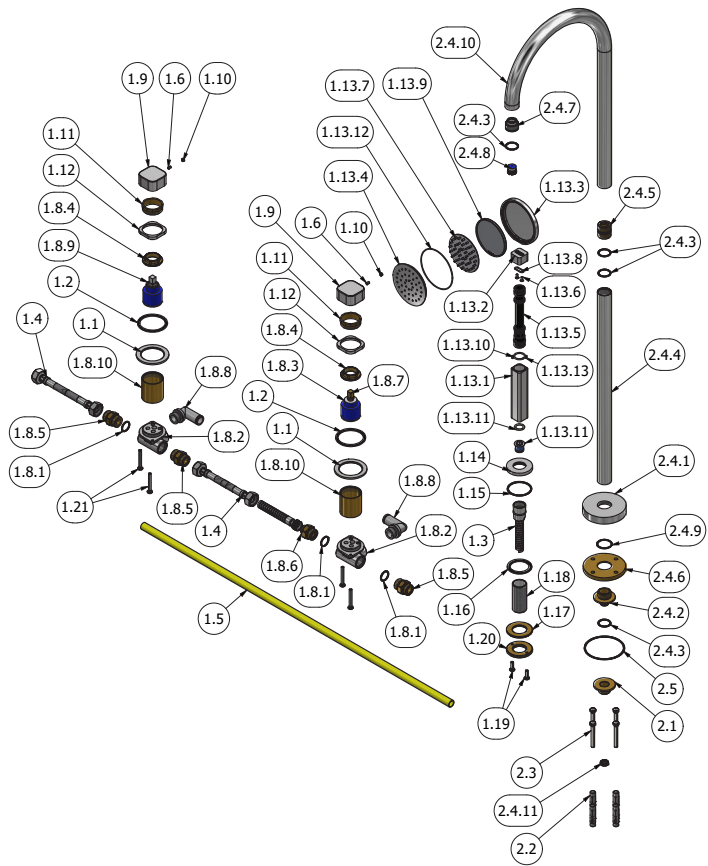
Material

BRASS
According to CuZn39Pb3 (CW614N)
Max Lead content: 2.5%



WE ARE IB

Parts list			
ELEM.	CODE	DESCRIPTION	QTA
1	CPKE0397 CCN 1	assembled 3 hole bath side	1
1.1	AC00011661	Support ring Ø60 Ø42.2 H3	2
1.2	AQ00011028	Flat gasket Ø55 Ø47 H2	2
1.3	AQ0009555	Terminal d'agg G3/8" F G1/2" cono L150	1
1.4	AQ0006540	Flex inox G1/2" F G1/2" F L300	2
1.5	AQ0013714- 1	Risina pipe PA11 DIN 74324 Ø14xØ12 L80 cm	1
1.6	AQ0001081	Grubscrew M4x6 flat point	2
1.7	AQ0006576	No return valve Ø15 (31.4015.00001)	1
1.8	CPEF397C C-19	Preassembled 3 hole bath side	1
1.8.1	AQ0004630	OR 17.16x1.78 NBR 70 SH	4
1.8.2	AQCT10369	Recessed shower mixer body Ø35 DZR	2
1.8.3	AQ00013143	Ceramic cartridge Ø35 Wout/D KDZ HTG	1
1.8.4	AQ0001040	Cartridge ring nut M37x1.5 H9	2
1.8.5	AS0010301	Reduction G1/2" M G1/2" M with valve seat	3
1.8.6	AS0011227	Connection piece G1/2" M G3/8" M with valve seat	1
1.8.7	Asta x AQ0013143	Brass insert 9x9 for AQ0013143	1
1.8.8	AQ0013713	Connection piece L G1/2" Ø14 (2031019)	2
1.8.9	AQ0013271	Ceramic cartridge KRJ 35A 9x9	1
1.8.10	AS0016843	Ring M37x1.5 Ø39.8 H43	2
1.9	AC0016801	Handle 42x42 H21.5 plane	2
1.10	AQ0012203	Plug	2
1.11	AS0016845	Ring Ø38.5 M37X1.5M 12.3	2
1.12	AC0016844	Ring 24x24 H5.5 foro Ø37.5	2
1.13	CPEF090C CXN1	Square hand shower 24x24 H214	1
1.13.1	AC0016812	Grip 24x24 H.110.5	1
1.13.2	AC0016811	Connection 24x24 M20X1 H16	1
1.13.3	AQ0016231 3	Handshower head Ø90	1
1.13.4	AQ0016231 4	Diffuser holder flange	1
1.13.5	AQ0016231 5	Insert for handshower G1/2"	1
1.13.6	AQ0016231 6	Screw inox M3x8 TSP DIN7991	2
1.13.7	AQ0016231 7	Shower diffuser	1
1.13.8	AQ0016231 8	OR12x1.5 NBR 70 SH	1
1.13.9	AQ0016231 9	Diffuser press cover	1
1.13.10	AQ0016231 10	OR 18x2 NBR 70 SH	1
1.13.11	AQ0016231 11	OR 13.95x2.62 NBR 70 SH	2
1.13.12	AQ0016231 12	OR 80x1.3 NBR 70 SH	1
1.13.13	AQ0012230	Stainless stell pin Ø2.5x6	2
1.14	AC0016840	Base Ø48 H6 G3/4"	1
1.15	AQ0013363	OR 41x2 NBR 70 SH	1
1.16	AQ0008013	Rubber packing 45x35x2	1
1.17	AS0010697	Washer Ø48 x Ø26.5 x3	1
1.18	AC0012829	Stem G3/4" H58	1
1.19	AQ0010358	Inox screw M5x16 ISO 7045	2
1.20	AS0012647	Ring nut G3/4"	1
1.21	AQ0010585	Screw inox M5x40 tc	4
2	CPKRX399 CCN 1	Preassembled free standing bath filler spout	1
2.1	AS0016753	Fitting Ø340 G1-2M	1
2.2	AQ0010075	Inox rawplug M6 Ø10 L45	4
2.3	AQ0015835	Inox screw M6x50 DIN933	4
2.4	CPRX399C CXN 1	Preassembled free standing bath filler spout	1
2.4.1	AQ0013888	Rosette Ø80 H15	1
2.4.2	AS0016751	Connection Ø40 M24x1M	1
2.4.3	AQ0001400	OR 20.35x1.78 NBR 70 SH	4
2.4.4	AC0016749	Pipe Ø26 th.1.5 L425	1
2.4.5	AS0016748	Fitting M24X1M	1
2.4.6	AS0016750	Flange Ø78 H.7	1
2.4.7	AC0016747	Reduction for aerator M24x1M M16.5x1F	1
2.4.8	AQ0014729	Aerator cachè M16.5x1 neostrahl (01.5175.000)	1
2.4.9	AQ0006586	OR 25.12x1.78 NBR 70 SH	1
2.4.10	AC0016746	Bridge spout Ø26 int. 240 L.439	1
2.4.11	AQ0011059	OR 12x1.5 NBR 70 SH	2
2.5	AQ0013132	OR 70x2 NBR 70 SH	1





WARRANTY

All IB Rubinetterie SpA products are warranted for 10 years from the date of purchase, for the following cases:

- Defects of casting, porosity and chrome plating.
- Operating defects caused by incorrect fabrication.

The warranty provides for repair or replacement of products with fabrication defects recognized by our technical office. There is no other type of compensation anche the merchandise must be returned FOB our warehouse. The warranty only cover surface defects (scatches, dings, etc.) on fitting that have not been installed and used, returned in its original packaging with all components. O-ring, gasket seals and components subject to wear proportional to use are warranted for 2 years.

The warranty is void in the following cases:

Error installing and putting the product into service.

Deterioration of finished surfaces due to use of cleaning products containing acids or abrasive substances. Deterioration of surface with finishes other than chrome plating. Their durability is, in fact, dependent on the user's care and gentleness of use.

Deterioration of the fitting due incorrect installation.

Improper repairs and maintenance performed without the company's prior authorization.

The warranty from IB Rubinetterie SpA is not renewable.

Cleaning

We recommended cleaning the finish surfaces with water and soap, using a soft cloth.

Do not use detergents that contain hydrochloric acid or abrasive substances.

