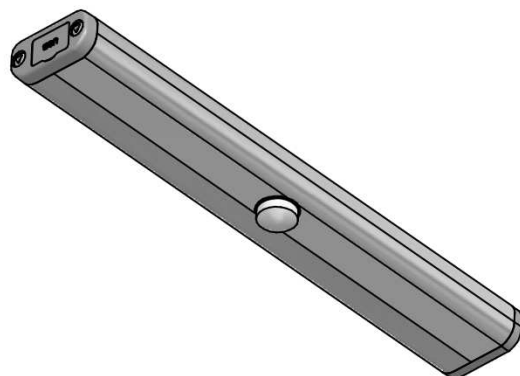
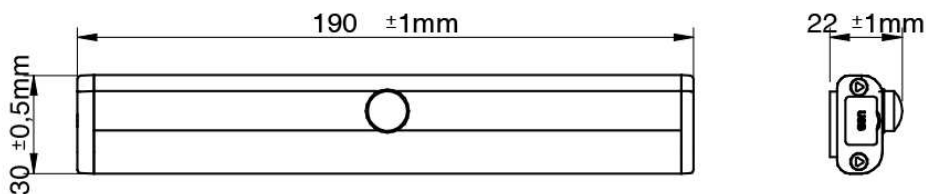


MODEL: REGLETA LED BATERIA LED CIII IP44 0,72W 3,7V 800MA

CODE: 23031

DIMENSIONS OF PRODUCT:



CRITERIA OF EXTERIOR ASPECT(RE-33033):

QUALITY OF POLISHED SURFACE:

SURFACES :

- 1- Support plate: ▽
- 2- Top and side: ▽
- 3- Front and bottom: ▽

QUALITY SYMBOLS

- ▽ NORMAL
- ▽▽ GOOD
- ▽▽▽ VERY GOOD

MATERIALS AND DECORATIONS:

Aluminum anodised

FIXING TO SURFACE:

BOXING

INSIDE	UNITS	MEASUREMENTS "mm"			WEIGHT "kg"	VOLUME "m3"	COMPONENTS
Box	1	0,03	0,2	0,35	0,10	0,0021	1 AUT.DRAWER LIGHT IP44 TDL7120SW 2 Sheet instructions
OUTSIDE							
Lot box	140	0,4	x 0,23	x 0,4	24	0,036800	140 Individual boxes by batch
Palet	0	0	x 0	x 0		0,000000	

MANUFACTURING REQUIREMENTS:

Minimum of production: 1000 Un.
 Delivery time: 55 Working days

SPARE

ELECTRIC POWER

Nominal voltage	Power	Lamp holder	Lamp	Connexion to network
12V		SMD LED		Powered by battery and charger USB

STANDARIZATION AND CLASSIFICATION



ILLUMINANCE AND LIGHT SOURCE

Light temp	life bulb	Lux		Direction of light
OK	36000h	1) 25		
	Lumens	2) 50		
	4) 390	3) 75		

ECO DESIGN

	Ecological impact value