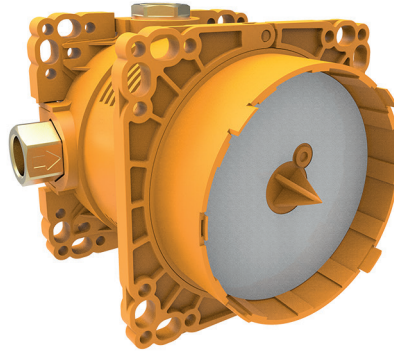


Concealed System Simibox Standard for bath and shower mixer 3.7898.0.000.000.1



TECHNICAL DATA

Order no.	3.7898.0.000.000.1
Connection	1/2" GN (one stopper 1/2" is included)
Flow rate	Spout: 20.6 l/min (3 bar)* Shower: 18.1 l/min (3 bar)* * except for the thermostatic models
Acoustic class	Spout: IID Shower: IIC
Specification	Integrated stopvalves (for cold and warm water shut-off) Reversibility of supply and discharge lines Fitting depth of min. 102 mm Position adjustment by up to 5° Delivered with sealing sleeve and protective cap Flushing and fitting device premounted Matches all Laufen decors sets, both mechanical and thermostatic decor sets Suitable for all types of installation: mounting in, on or before wall Practical fitting aids, to be ordered separately

Mounting acc. excl.	Mounting aid for Simibox in/before wall, order no. 3.7998.0.003.000.1 Additional mounting flanges, thickness 8 mm, order no. 3.7998.0.000.500.1 Extension set for Simibox, L = 25 mm – order no. 3.7998.0.000.050.1 L = 50 mm – order no. 3.7998.0.000.060.1 Rose spacer for Simibox, L = 15 mm – order no. 3.7998.4.004.050.1 L = 30 mm – order no. 3.7998.4.004.060.1
---------------------	----------------------------------------------------------------------------------------------------------------------------------------------------------------------------------------------------------------------------------------------------------------------------------------------------------------------------------------------------------------------------------------------------

TECHNICAL DRAWINGS

