



Easergy P1

Simple, easy-to-use, and reliable protection relays



Built on over a century of experience in medium-voltage protection relays, the new Easergy P1 is designed to meet your customers' needs for electrical protection, connectivity and everyday ease-of-use.

Flexible, graded functionality makes Easergy P1 suited for basic distribution applications in commercial and industrial buildings, industrial settings or distribution utilities, or as LV applications when ANSI functions are required. Ideal for back-up protection in new installations or in retrofit applications when replacing legacy relays.

Easy to use

Help economize your time and money

- Limited variants for easy to order, short delivery time, optimized stock
- Intuitive, easily-configured HMI and settings tool
- Fast mounting with spring clips, possible to mount in ~10 seconds
- Easy commissioning, operation and maintenance with eSetup and Easergy Pro software
- Connect and power from USB port
- Commission with test mode
- QR code for fast document access
- Easy operation with in-built circuit breaker control, maintenance keys

Flexible

Help optimize your investment

- Cost and size-optimized for compact switchgears
- Graded functionality adapts for many applications in new or retrofit installations
- Model breakdown with graded functionality tailors the product to the application
- Two (2) serial-communication protocols, Modbus and IEC60870-2-103
- Eight (8) embedded languages
- Flexible application configuration

Reliable

Enhanced dependability product

- Enhanced dependability with reliable algorithms and insulated casing
- Best-in-class quality
- Non-volatile memory for settings and records
- Real-time clock retention for three days
- No battery

Help reduce risk of power outage

- Circuit breaker condition monitoring

Strive for sustainability

- Green Premium
- Low device energy consumption

se.com/easergy

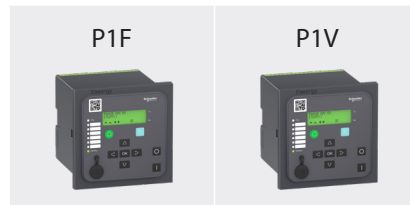
Life Is On

Schneider
Electric

Effective relay for basic applications

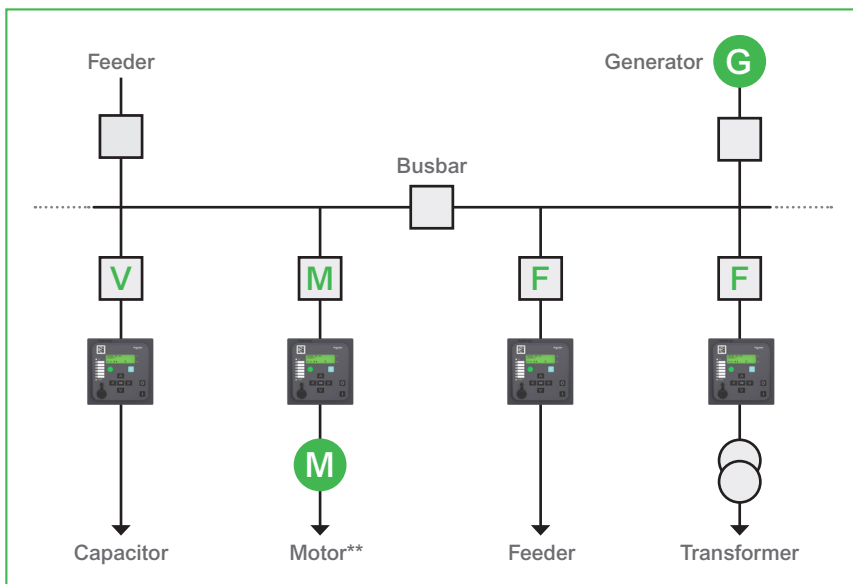
ANSI or IEC

Ideal for industrial buildings, distribution utilities and LV applications (if ANSI functions are needed)



Features and options

Current	3CT + 1CT	–
Voltage	1VT (option)	3VT or 4VT*
Overcurrent protection	✓	✓
Directional earth-fault protection	Option	–
Voltage protection	–	✓
Frequency protection	–	option
Inputs	up to 8	up to 6
Outputs	up to 8	up to 8
Programmable LEDs	6	6
CB control keys	✓	✓
Communications	USB & RS485*	USB & RS485*
Records	✓	✓
Display	LCD 32 x 2	LCD 32 x 2



*Depending on the model

** Future model

Schneider Electric Industries SAS Head Office

35 Rue Joseph Monier,
92500 Rueil-Malmaison, France
Phone: +33 (0)1 41 29 70 00

www.schneider-electric.com

January 2021

CE markings as per Directive 93/98/CEE

ISO/EHS/OHSAS certified manufacturing facility reinforces product quality and reliability. Independent lab reports available for CE.



Green Premium
eco-mark:

Schneider Electric commits to disclose comprehensive information on the environmental impacts of our products.

Life Is On

Schneider
Electric