

# LAUFEN

Elektronische Systemsteuerung für 8.4206.5/6 und 8.4112.2

Système électronique pour 8.4206.5/6 et 8.4112.2

Sistema elettronico per il 8.4206.5/6 e 8.4112.2

Electronic System for 8.4206.5/6 and 8.4112.2

Sistema electrónico para 8.4206.5/6 y 8.4112.2

Elektronische systeembediening voor 8.4206.5/6 en 8.4112.2



Bitte sorgfältig aufbewahren!  
A conserver précieusement!  
Si prega di conservare con cura!  
Please keep carefully!  
Por favor, consérvese con cuidado!  
Gelieve zorgvuldig te bewaren!

## Spülprogramme

**P1: STANDARD (Voreinstellung)**

Geeignet für viele Installationen:  
**1-Liter Spülung nach jeder Verwendung**

Vollständige Spülung 1 Liter

**P2: VARIO - umweltfreundlich**

Ideal für Hotels, Autobahnraststätten, Ausstellungsstandorte, Flughäfen und ähnliche Installationen.  
**Niedrige Nutzungsfrequenz mit vollständiger Spülung (1 Liter)**

Vollständige Spülung 1 Liter

**Hohe Nutzungsfrequenz mit kurzer Spülung (0,8 Liter) →**

Kurzspülung (0,8 Liter)

**P3: HYBRID = Wasserloser Betrieb mit Reinigungsfunktion**

In Stadien, Konzerthallen oder Schulen werden Urinale intensiv genutzt, gefolgt von einer Pause. Die LAUFEN-Steuerung kann so programmiert werden, dass nach der ersten Nutzung nicht gespült wird.

15 Minuten nach der ersten Nutzung reinigt eine 3-Liter-Spülung das Urinal sorgfältig.

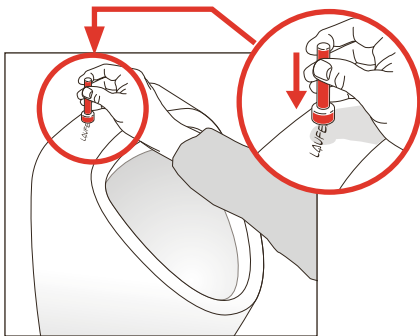
Mehrfache Nutzung innerhalb 15 Minuten

15 min

**1x 3 Liter-spülung**

keine Spülung

## Einstellen der Spülprogramme



Magnetschlüssel auf Logo **LAUFEN** setzen und halten

Magnetschlüssel von Logo **LAUFEN** wieder entfernen

1. beeeeep
2. beeeeep
3. beeeeep
4. beeeeep (4 x „beep“ während ca. 5 Sekunden)

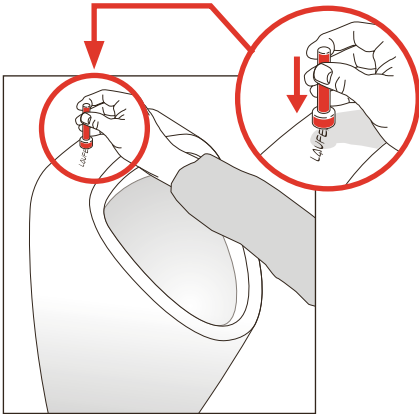
5 Sekunden Pause

5. beeeeep → **P1: STANDARD (Voreinstellung)**

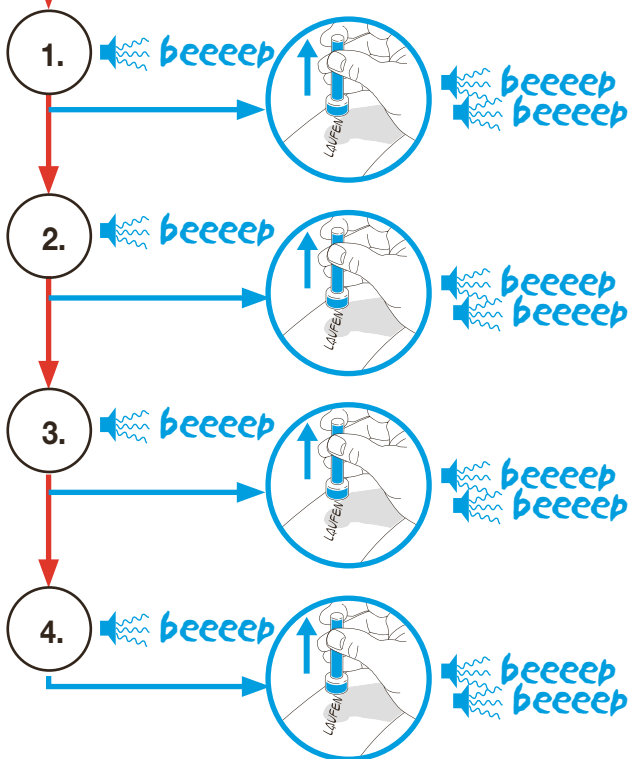
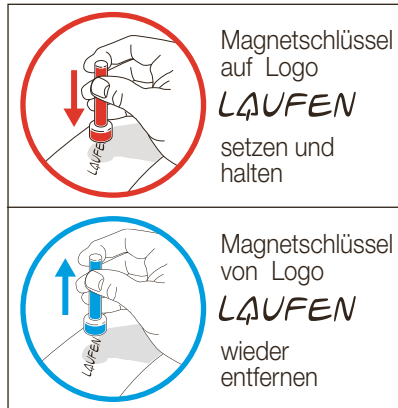
6. beeeeep → **P2: VARIO umweltfreundlich**

7. beeeeep → **P3: HYBRID wasserloser Betrieb mit Reinigungsfunktion**

## Reinigung und Diagnose aktivieren



## Symbolerklärung



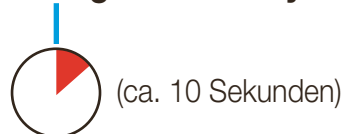
## Reinigungsprogramme

**5-minütige Pause:** Spülprogramm stoppt für 5 Minuten (während Pause Pieptöne), damit Urinal von Hand gereinigt werden kann. Anschliessend wird vollständige Spülung aktiviert. Steuerung wechselt wieder in voreingestellte Betriebsart.



**Vollständige Spülung:** Eine Spülung ist aktiviert. Steuerung wechselt wieder in voreingestellte Betriebsart.

**Intervallreinigung:** Steuerung initiiert 5 kurze Spülungen in voreingestellten Intervallen von 2 Minuten. Dadurch kann beispielsweise ein Entkalker wirken. Schliesslich vollständige Spülung, nach der die Steuerung wieder in die voreingestellte Betriebsart zurückkehrt.

## Diagnose des Systems



## Batteriemonitor

 beeeeep	2 Sekunden „Piepton“ vor dem Spülen --> schwache Batterien. Massnahme: Batterien <b>bald</b> austauschen.
 beeeeep	2 Sekunden „Piepton“ nach Urinalgebrauch <b>kein</b> Spülen --> Batterien leer. Massnahme: Batterien <b>sofort</b> austauschen.

 beeeeep

**1 x „beep“ + Spülung = System o.k.**  
**1 x „beep“ keine Spülung = Problem mit Magnetventil**

Bitte prüfen:

1. Anschluss Steuerung <-> Magnetventil
2. Wasseranschluss
3. Magnetventil

 beeeeep  
 beeeeep

**2 x „beep“ = Sensor-Problem**

Bitte prüfen:

1. Anschluss Steuerung <-> Sensor
2. Sensor
3. Elektronikmodul

 beeeeep  
 beeeeep  
 beeeeep

**3 x „beep“ = Batterien schwach:**  
austauschen

# Programmes de chasse d'eau

**P1: STANDARD (préréglage)**

S'applique à de nombreuses installations: **Chasse d'eau 1 litre après chaque usage**

Chasse d'eau plein débit (1 litre)

**P2: VARIO - ménage l'environnement**

L'équipement idéal pour hôtels, aires d'autoroute, musées, expositions, aéroports et installations similaires.

**Usage normal à chasse d'eau plein débit (1 litre)**

Chasse d'eau plein débit (1 litre)

**Usage fréquent à chasse d'eau brève (0,8 litre)**

Chasse d'eau brève (0,8 litre)

**P3: HYBRIDE = sans eau avec fonction nettoyage**

Dans les stades, salles de concert ou écoles, les urinoirs sont utilisés intensément, un usage qui est suivi d'une pause. L'urinoir LAUFEN peut être programmé pour éviter que la chasse d'eau ne se déclenche après le premier usage.

15 minutes après le premier usage, une chasse d'eau de 3 litre nettoie entièrement l'urinoir.

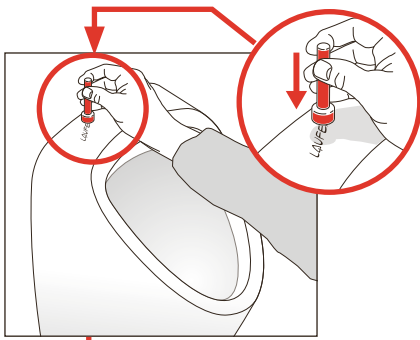
15 min

Usages multiples pendant 15 minutes

Chasse d'eau de **1x** 3 litres

Pas de chasse d'eau Pas de chasse d'eau

## Régler les programmes de chasse d'eau



Placer la clé magnétique sur **LAUFEN** le logo et l'y maintenir

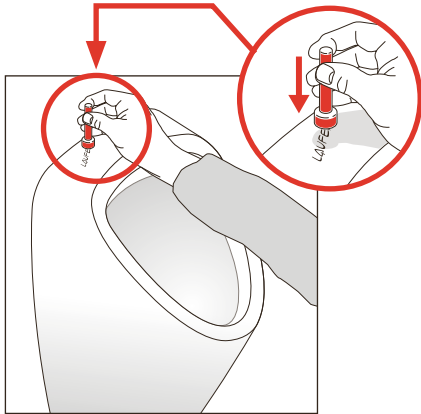
Enlever la clé magnétique de dessus le logo **LAUFEN**

1. beeeeep
2. beeeeep
3. beeeeep
4. beeeeep (4 x „beep“ durant environ 5 secondes)

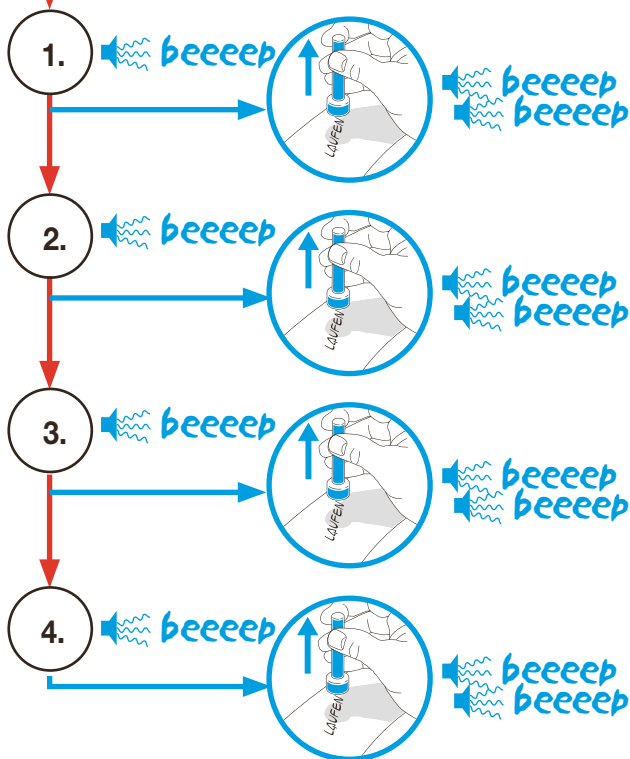
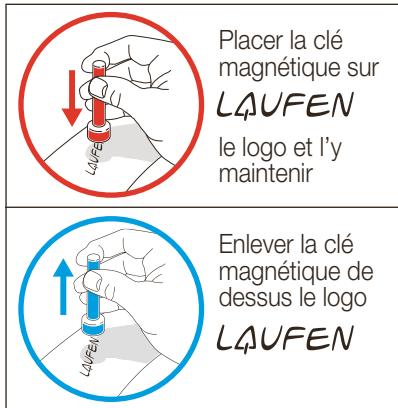
Pause de 5 secondes:

5. beeeeep beeeeep → **P1: STANDARD (préréglage)**
6. beeeeep beeeeep → **P2: VARIO – ménage l'environnement**
7. beeeeep beeeeep → **P3: HYBRIDE – sans eau avec fonction nettoyage**

## Activer Nettoyage et Diagnostic



## Explication des symboles



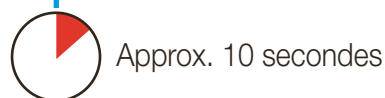
## Programmes de nettoyage

**5 minutes d'arrêt:** le programme chasse d'eau s'interrompt durant 5 minutes (bips pendant la pause) pour permettre de nettoyer manuellement l'urinoir. A la fin de ces opérations, le nettoyage complet est activé. L'unité de contrôle revient alors au mode pré-réglage.

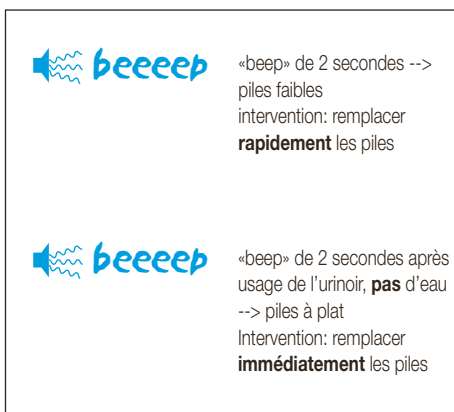
**Chasse d'eau plein débit:** la chasse d'eau est activée. L'unité de contrôle revient au mode pré-réglage.

**Nettoyage intermédiaire:** l'unité de contrôle déclenche 5 chasses d'eau brèves, à intervalles préprogrammés de 2 minutes. Ce qui, par exemple, permet au détartreur de travailler. Cette opération s'achève par une chasse d'eau plein débit, après quoi l'unité de contrôle revient au mode pré-réglage.

## Diagnostic du système



## Moniteur de piles



**beeeep** 1 x «beep» + chasse d'eau = système O.K.  
1 x «beep» sans chasse d'eau = problème de valve solénoïde

Veillez vérifier:

1. la connexion de l'unité de contrôle <-> valve solénoïde
2. l'arrivée d'eau
3. la valve solénoïde









**beeeep beeeep** 2 x «beep» = problème de capteur

Veillez vérifier:

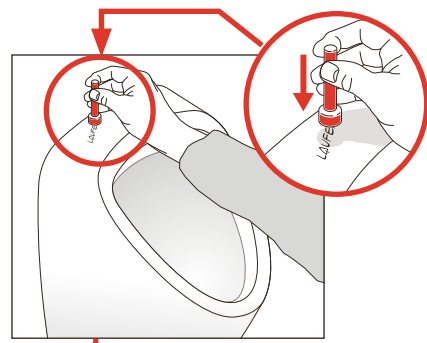
1. la connexion de l'unité de contrôle <-> capteur
2. les capteurs
3. le module électronique

**beeeep beeeep beeeep** 3 x «beep» = piles faibles: les remplacer

# Programmi di sciacquo

<p><b>P1: STANDARD</b> (preimpostato)</p> <p>Adatto per molti impianti: <b>uno sciacquo di 1 litro dopo ogni uso</b></p>  <p>sciacquo completo (1 litro)</p>	<p><b>P2: VARIO - ecologico</b></p> <p>La regolazione ideale per alberghi, servizi autostradali, fiere, aeroporti e impianti similari.</p> <p><b>Uso ridotto con sciacquo completo (1 litro)</b></p>  <p>sciacquo completo (1 litro)</p>  <p>sciacquo completo (1 litro)</p> <p><b>Uso elevato con sciacquo ridotto (0,8 litri)</b></p>  <p>Sciacquo ridotto (0,8 litri)</p>  <p>Sciacquo ridotto (0,8 litri)</p>  <p>Sciacquo ridotto (0,8 litri)</p>  <p>Sciacquo ridotto (0,8 litri)</p>	<p><b>P3: HYBRID = Modo senz'acqua con funzione di lavaggio</b></p> <p>Negli stadi, nelle sale da concerto o nelle scuole gli orinatoi vengono utilizzati intensamente, poi segue una pausa. Il sistema LAUFEN può essere programmato in modo da non sciacquare dopo il primo uso.</p> <p>15 minuti dopo il primo uso uno sciacquo di 3 litri lava a fondo l'orinatoio.</p>  <p>15 min 1x 3 Liter-spülung</p>
--	---	---

## Impostazione dei programmi di sciacquo



Poggiare e tenere ferma la chiave magnetica sul logo **LAUFEN**

Togliere nuovamente la chiave magnetica dal logo **LAUFEN**

1. beeeeep  
2. beeeeep  
3. beeeeep  
4. beeeeep (4 „beep“ durante c. 5 secondi)

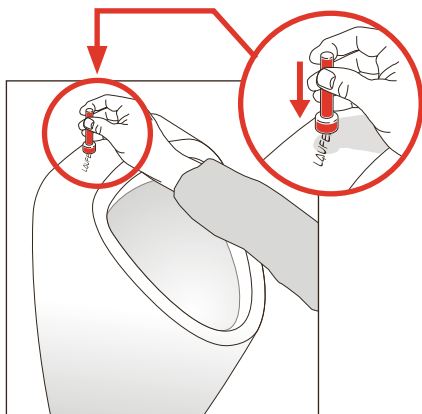
Pause di 5 secondis

5. beeeeep beeeeep → **P1: STANDARD (preimpostato)**

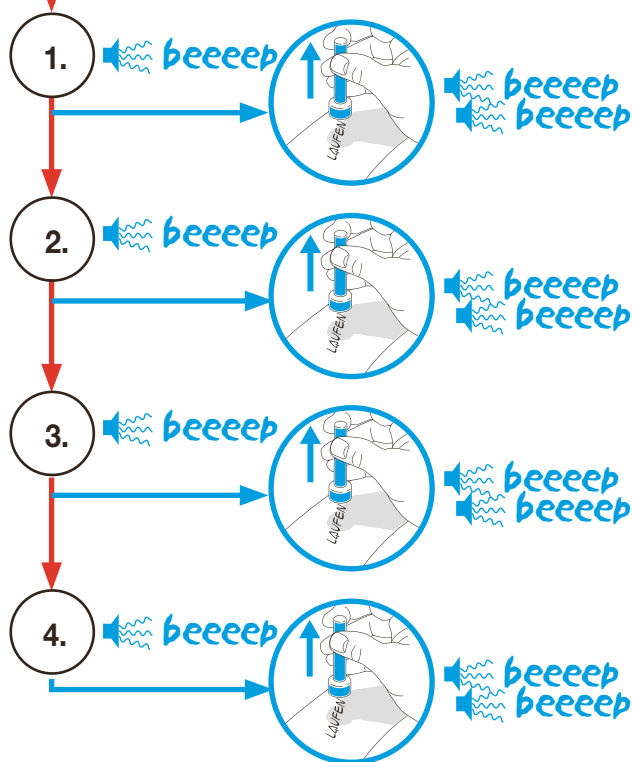
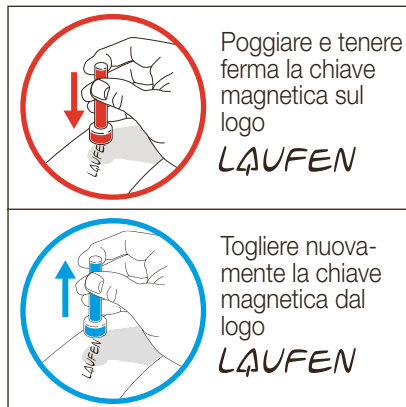
6. beeeeep beeeeep → **P2: VARIO ecologico**

7. beeeeep beeeeep → **P3: HYBRID Modo senz'acqua con funzione di lavaggio**

## Attivare pulizia e diagnosi



## Significato dei simboli



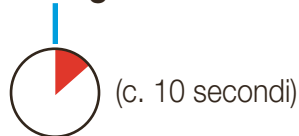
## Programmi di lavaggio

**5 minuti di pausa:** il programma di sciacquo si ferma per 5 minuti (bip durante la pausa) per permettere di pulire l'orinatoio a mano. Successivamente si attiva lo sciacquo completo. L'unità di controllo torna al modo preimpostato.

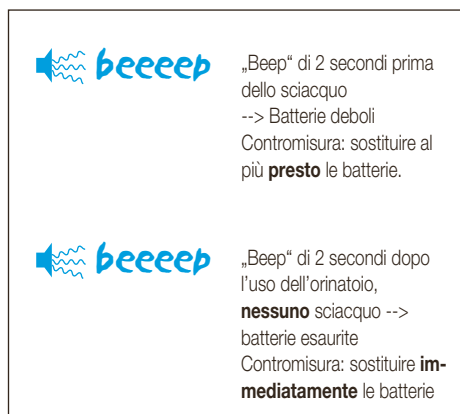
**Sciacquo completo:** viene attivato uno sciacquo. L'unità di controllo torna al modo preimpostato.

**Lavaggio intervallato:** l'unità di controllo effettua 5 brevi sciacqui agli intervalli preimpostati di 2 minuti. Questo consente, per esempio, di lasciar agire il decalcificatore. Alla fine arriva uno sciacquo completo, dopo di che l'unità di controllo ritorna al modo preimpostato.

## Diagnosi del sistema



## Controllo batterie



**1 „beep“ + sciacquo = sistema o.k.**  
**1 x „beep“ senza sciacquo = problema elettrovalvola**

Controllare:  
1. Connessione un. controllo <-> elettrovalvola  
2. Alimentazione acqua  
3. Elettrovalvola

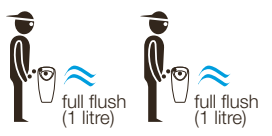
**2 x „beep“ = problema sensore**

Controllare:  
1. Connessione un. controllo <-> sensore  
2. Sensore  
3. Modulo elettronico

**3 x „beep“ = batterie deboli:** sostituirle


# Flush programs

**P1: STANDARD (pre-set)**  
 Suitable for many installations:  
**A 1 litre flush after each use**

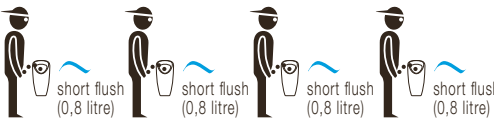


**P2: VARIO - environmentally friendly**  
 The ideal setting for hotels, motorway services, exhibition sites, airports and similar installations.

**Low usage à full flush (1 litre)**



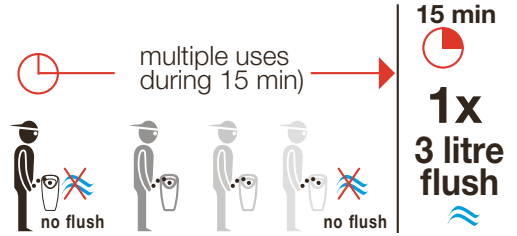
**High usage à short flush (0,8 litre)**



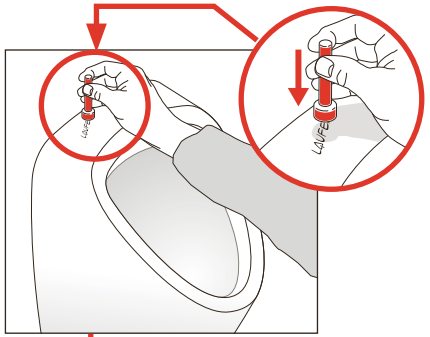
**P3: HYBRID = Waterless with cleaning function**

In stadiums, concert halls or schools, urinals will be used intensively followed by a pause. LAUFEN steering can be programmed to not flush after the first usage.

15 minutes after the first usage, a 3 litre flush will thoroughly clean the urinal.

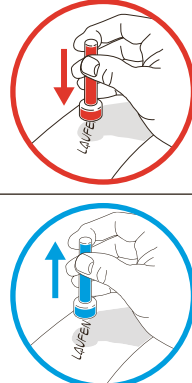


## Setting flush programs



Place the magnetic key on the **LAUFEN** logo and hold it there

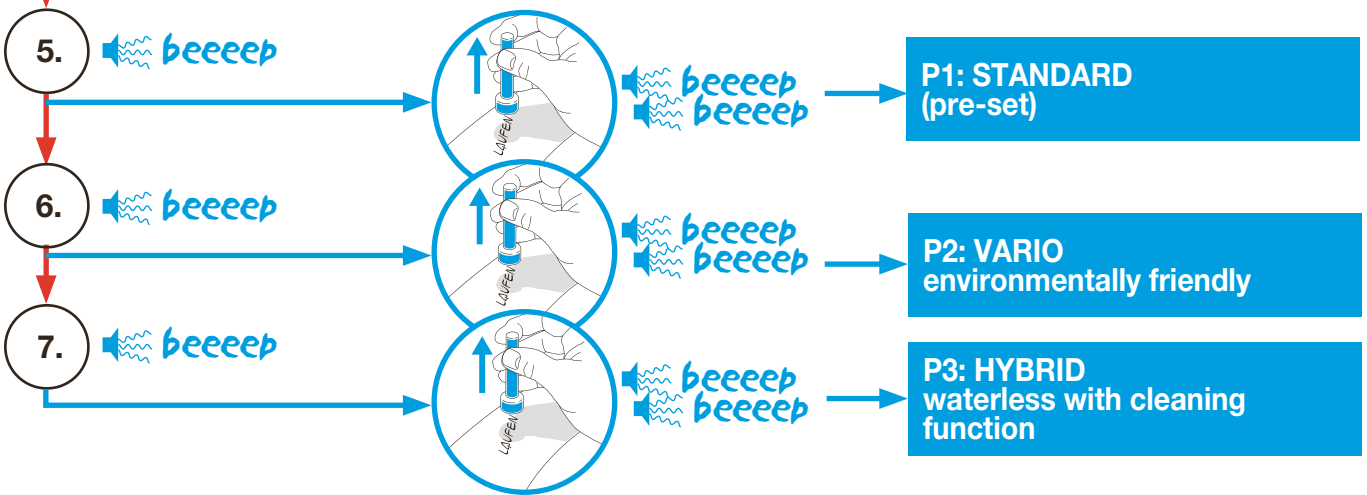
Now remove the magnetic key from the logo **LAUFEN** again



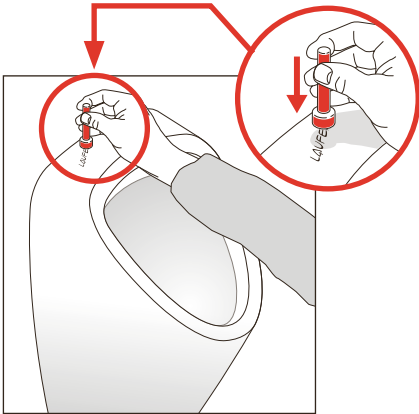
1. beeeep
2. beeeep
3. beeeep
4. beeeep (4 x "beep" for about 5 seconds)

Pause of 5 seconds

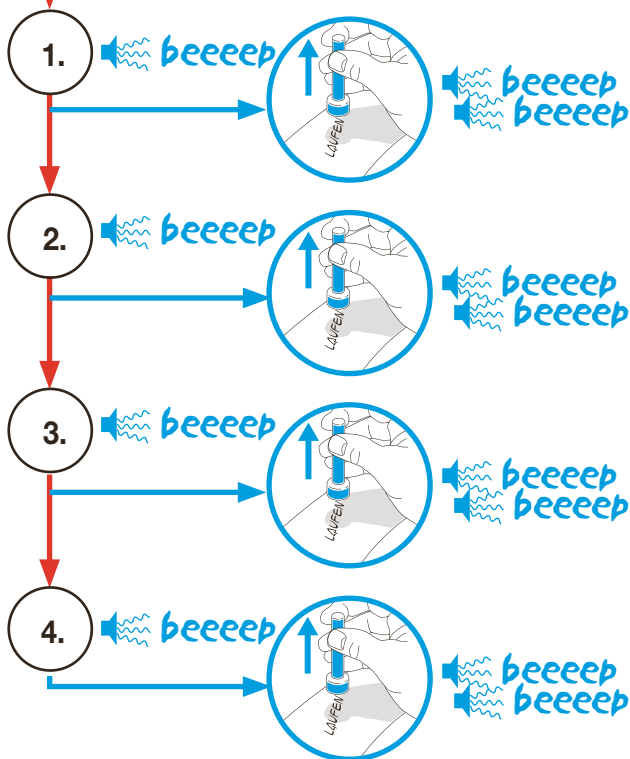
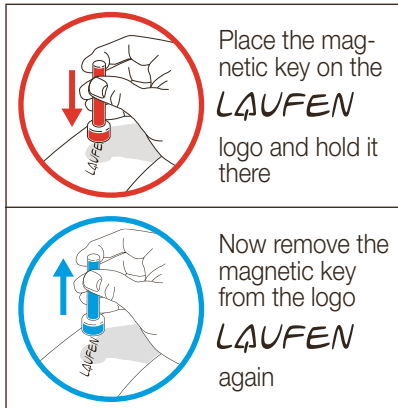
5. beeeep beeeep → **P1: STANDARD (pre-set)**
6. beeeep beeeep → **P2: VARIO environmentally friendly**
7. beeeep beeeep → **P3: HYBRID waterless with cleaning function**



## Activate cleaning and diagnosis



## Explanation of symbols



## Cleaning programs

**5 minute suspension:** The flushing program stops for 5 minutes ("beeps" during the pause) to allow the urinal to be cleaned manually. The complete rinse is now activated. The control unit switches back to its pre-set mode.

**Full flush:** A flush is activated. The control unit switches back to its pre-set mode.

**Interval cleaning:** The control unit initiates 5 short flushes at preset intervals of 2 minutes. This allows, for example, descaler to work. Finally there is a full flush, after which the control unit returns to the pre-set mode.

## Diagnosis of system



## Battery monitor

	2 seconds „beep“ prior flushing --> weak batteries Action item: Replace battery <b>shortly</b>
	2 seconds „beep“ after use of urinal, <b>no</b> flushing --> dead batteries Action item: Replace battery <b>immediately</b>



1 x „beep“ + flush = system o.k.  
1 x „beep“ no flush = solenoid valve problem

Please check:

1. Connection control unit <-> solenoid valve
2. Water supply
- 3. Solenoid valve**

2 x „beep“ = sensor problem

Please check:

1. Connection control unit <-> sensor
2. Sensor
3. Electronic module



3 x „beep“ = Weak batteries: Replace



# Programas de descarga

**P1: ESTANDAR (preestablecido)**  
Indicado para muchas instalaciones:  
**Descarga de 1 litro tras cada uso**

descarga completa (1 litro)      descarga completa (1 litro)

**P2: VARIO - ecológico**  
Configuración ideal para hoteles, servicios de carretera, sedes de exposiciones, aeropuertos e instalaciones similares.  
**Uso reducido – una descarga completa (1 litro)**

descarga completa (1 litro)      descarga completa (1 litro)

**Uso frecuente – una descarga corta (0,8 litros)**

descarga corta (0,8 litros)      descarga corta (0,8 litros)      descarga corta (0,8 litros)      descarga corta (0,8 litros)

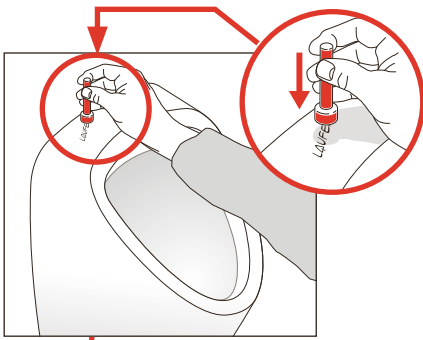
**P3: HYBRID = modo sin agua con función de limpieza**  
En estadios, salas de conciertos o escuelas, los urinarios se utilizarán de forma intensiva seguido de una pausa. La dirección LAUFEN puede programarse para no realizar ninguna descarga tras el primer uso.  
15 minutos después del primer uso, una descarga de 3 litros se encargará de limpiar a fondo el urinario.

múltiples usos durante 15 minutos → 15 min

sin descarga      sin descarga

**1x descarga de 3 litros**

## Configuración de los programas de descarga

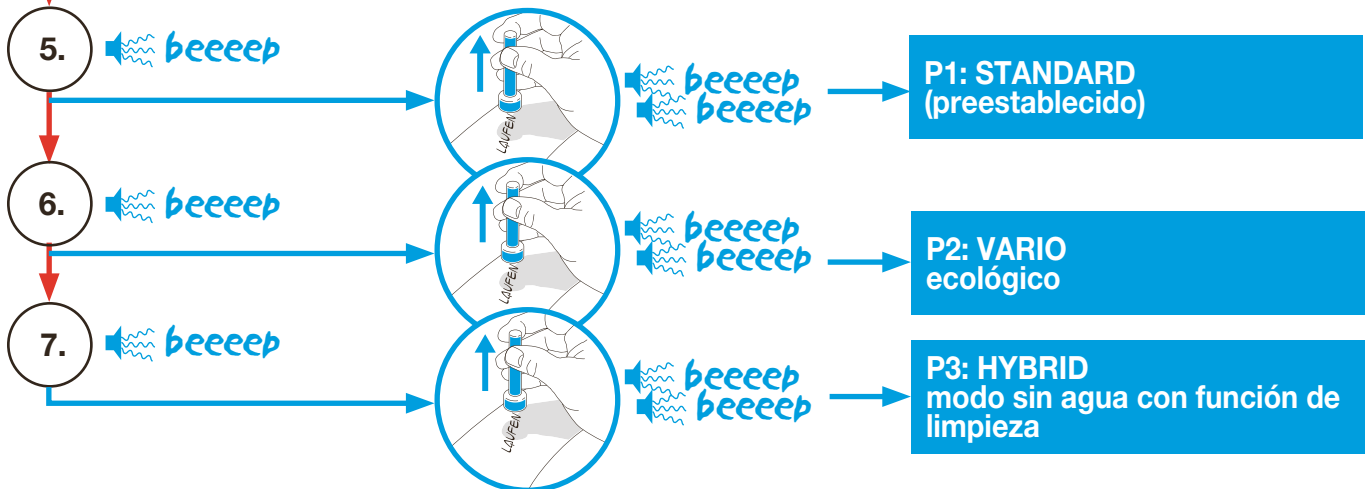


Poner y detener la llave magnética en posición **LAUFEN**

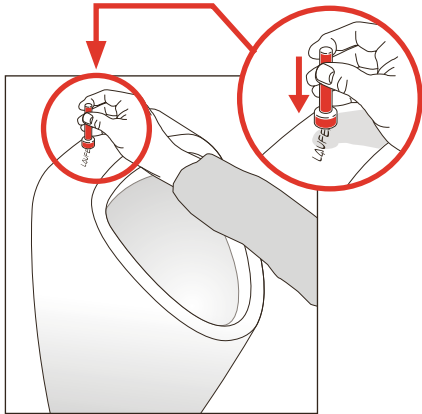
Volver a retirar la llave magnética de la posición **LAUFEN**

1. beeeep
2. beeeep
3. beeeep
4. beeeep (4 x "beep" durante 5 segundos aprox.)

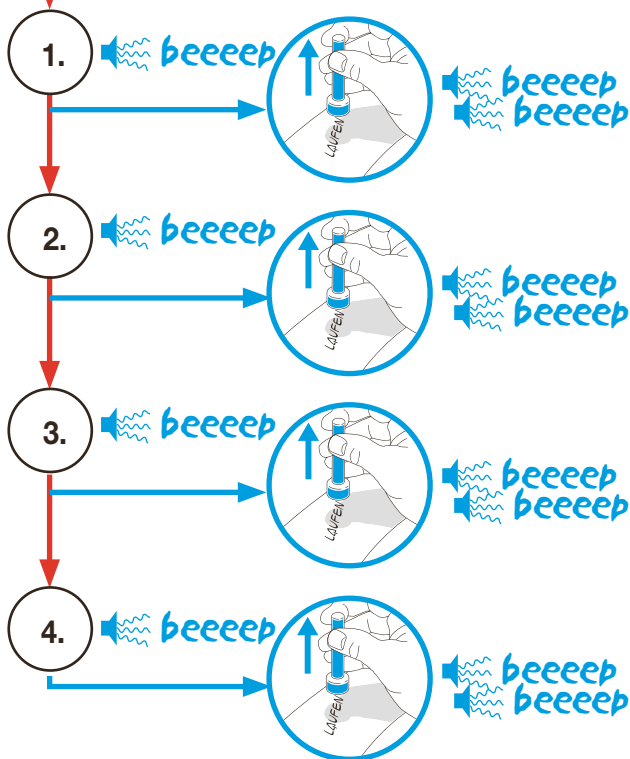
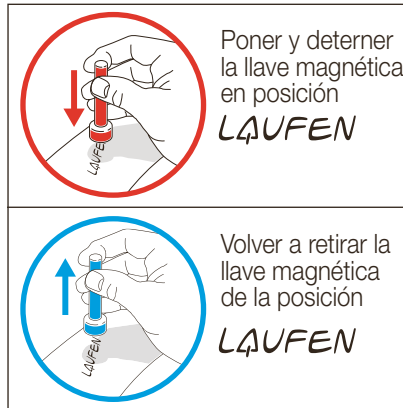
Pause de 5 segundos



## Activar limpieza y diagnosis



## Leyenda



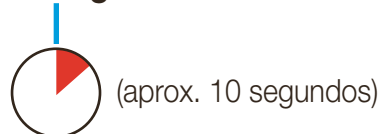
## Programas de limpieza

**Suspensión 5 minutos:** El programa de descarga se detiene durante 5 minutos (durante las pausas de los sonidos pío) para permitir la limpieza manual del urinario. Conectándolo se activa el lavado completo. La unidad de control vuelve al modo preestablecido.

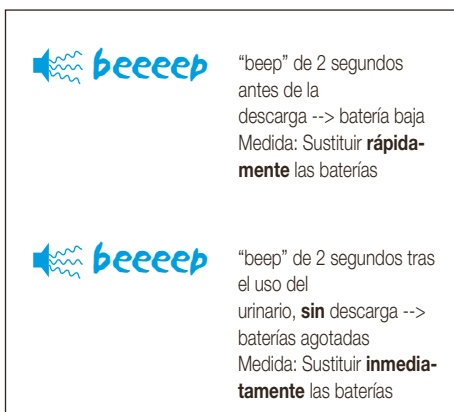
**Descarga completa:** Se activa una descarga. La unidad de control vuelve al modo preestablecido.

**Intervalo de limpieza:** La unidad de control inicia 5 descargas cortas a intervalos preestablecidos de 2 minutos. Esto permite, por ejemplo, que trabaje el desincrustador. Por último, se realiza una descarga completa tras la cual la unidad de control vuelve al modo preestablecido.

## Diagnosis del sistema



## Control de la batería



1 “beep” + descarga = sistema correcto  
1 “beep” sin descarga = problema de la válvula solenoide

Compruebe:

1. Conexión de la unidad de control <-> válvula solenoide
2. Suministro de agua
3. Válvula solenoide

2 “beep” = problema del sensor

Compruebe:

1. Conexión de la unidad de control <-> sensor
2. Sensor
3. Módulo electrónico

3 “beep” = batería baja: Cambiar

# Spoelprogramma's

**P1: STANDARD**  
(vooraf ingesteld)

Geschikt voor veel installaties:  
**A 1 liter spoeling na elk gebruik**




volledige spoeling (1 liter)      volledige spoeling (1 liter)

**P2: VARIO - milieuvriendelijk**


Ideaal voor hotels, wegre-restaurants, expositieruimten, luchthavens en dergelijke installaties.

**Laag gebruik met volledige spoeling (1 liter)**



volledige spoeling (1 liter)      volledige spoeling (1 liter)

**Hoog gebruik met korte spoeling (0,8 liter)**




korte spoeling (0,8 liter)      korte spoeling (0,8 liter)      korte spoeling (0,8 liter)      korte spoeling (0,8 liter)

**P3: HYBRID = waterloze werking met reinigende functie**

In stadions, concertzalen of scholen worden urinoirs intensief gebruikt, gevolgd door een pauze. LAUFEN kan geprogrammeerd worden om na het eerste gebruik niet te spoelen.

15 minuten na het eerste gebruik reinigt een spoeling met 3 liter het urinoir grondig.



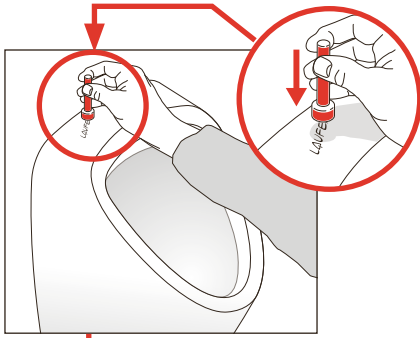
veelvoudig gebruik gedurende 15 min.

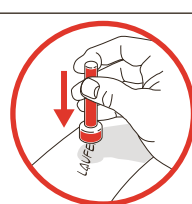
15 min

**1x** spoeling met 3 liter

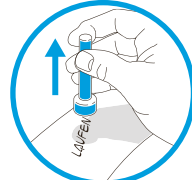
geen spoeling      geen spoeling

## Instelling van de spoelprogramma's






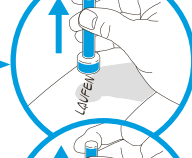

Magneetsleutel op logo **LAUFEN** brengen en houden



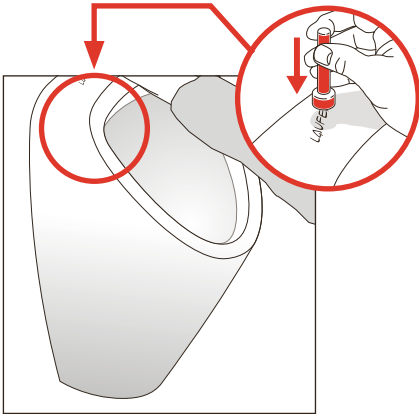
Magneetsleutel terug van logo **LAUFEN** halen

1. beeeep
2. beeeep
3. beeeep
4. beeeep (4 x „beep“ gedurende ong. 5 seconden)

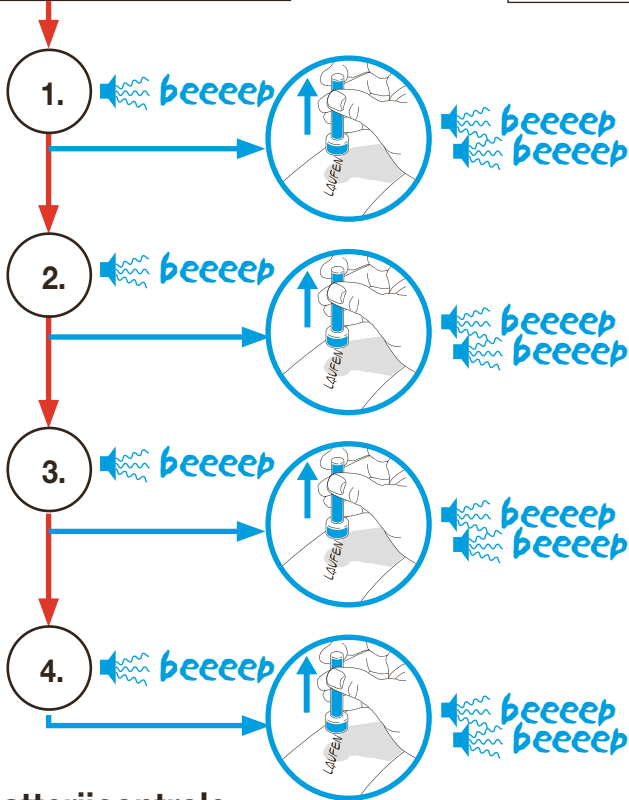
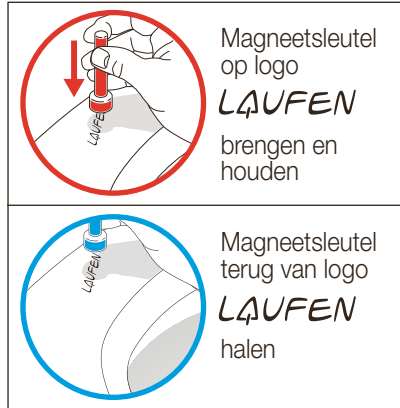
○ Pauze van 5 seconden

5.	beeeep beeeep		beeeep beeeep	<b>P1: STANDARD</b> (vooraf ingesteld)
6.	beeeep		beeeep beeeep	<b>P2: VARIO</b> milieuvriendelijk
7.	beeeep		beeeep beeeep	<b>P3: HYBRID</b> waterloze werking met reinigende functie

## Reiniging en diagnose activeren



## Symboolverklaring



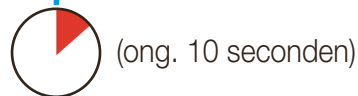
## Reinigingsprogramma's

**5 minuten onderbreking:** Het spoelprogramma stopt 5 minuten (gedurende pauze pieptonen), zodat het urinoir manueel gereinigd kan worden. Vervolgens wordt volledige spoeling geactiveerd. De besturingseenheid gaat terug naar de vooraf ingestelde werking.

**Volledige spoeling:** Een spoeling wordt geactiveerd. De besturingseenheid gaat terug naar de vooraf ingestelde werking.

**Intervalreiniging:** De besturingseenheid start 5 korte spoelingen op vooraf ingestelde intervallen van 2 minuten. Hierdoor kan de ontkalker bijv. werken. Tenslotte is er een volledige spoeling, waarna de besturingseenheid terug naar de vooraf ingestelde werking gaat.

## Systemdiagnose



## Batterijcontrole

2 seconden „beep“ vóór het spoelen  
--> zwakke batterijen  
Maatregel: vervang batterij **binnenkort**

2 seconden „beep“ na gebruik urinoir,  
**geen** spoeling --> lege batterijen  
Maatregel: Vervang batterij **onmiddellijk**

# LAUFEN

Laufen Bathrooms AG  
Wahlenstrasse 46  
CH-4242 Laufen, Switzerland  
www.laufen.com

**1 x „beep“ + spoeling = systeem in orde**  
**1 x „beep“ geen spoeling = probleem elektromagnetische klep**

Controleer:

1. Aansluiting besturingseenheid <-> elektromagnetische klep
2. Watertoevoer
3. Elektromagnetische klep

**2 x „beep“ = probleem sensor**

Controleer:

1. Aansluiting besturingseenheid <-> sensor
2. Sensor
3. Elektronische module

**3 x „beep“ = zwakke batterijen:**  
Vervang