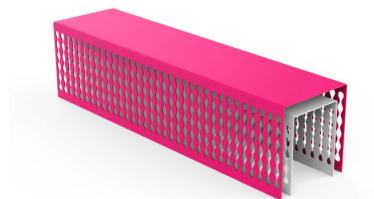


BENCHES: MULTIPLICITY



| Categories: [BENCHES](#), [URBAN DESIGN](#)

PRODUCT DESCRIPTION

Designer: [Karim Rashid](#)

Multiplicity Bench is made of two elements in steel sheet, which can have two different colours. The two parts are the result of a laser-cut and of the fold of the sheets (60/10 thickness). On each one 4 plates, with a hole 11 mm diam. For the fixing to the ground through specific bolts (not provided), are welded. During the installation, the inner, smaller element will have to be placed first, later the bigger, outer one.

For the realization of this product made in Italy, Steel EN10111DD11 is used and later treated with a cycle of sandblasting, cataphoresis and powder coating. Such cycle is meant to guarantee the protection of the painted products, in an environment of C4 corrosion class, as requested by the UNI regulations EN ISO 12944-2. The products are eventually polyester-powder coated with RAL colours at choice.

Max Dimensions:

Height: **420 mm**
Width: **400 mm**
Length: **1642 mm**
Weight: **147 kg**

Material: [steel](#)



GALLERY IMAGES

