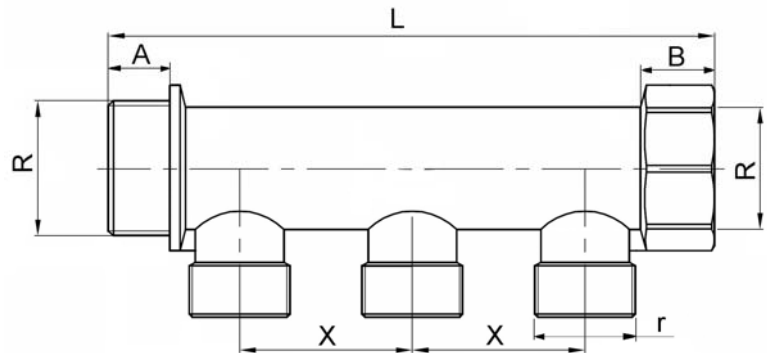


Art.: 70035

Colector Simple Componible / Module Single Manifold

| Características | Features |
|--|--|
| 1. Construcción en latón CW617N según UNE-EN 12165, acabado niquelado. | 1. Brass construction according to UNE-EN 12165, nickel-plating. |
| 2. Extremos conexión en línea rosca macho-hembra según ISO 228/1. | 2. Threaded ends connection male-female according to ISO 228/1. |
| 3. Conexión en derivación rosca macho W24,5 x 19h / 1". | 3. Lateral branch connection male thread W24,5 x 19f / 1". |
| 4. Presión máxima de trabajo 10 bar. | 4. Maximum working pressure 10 bar. |
| 5. Temperatura máxima de trabajo 180 °C. | 5. Maximum working temperature 180 °C. |



| Ref. | Medida / Size R | Nº derivaciones Branches Num. | DN | Dimensiones / Dimensions (mm) | | | | | Peso / Weight (kg) |
|-------------|--------------------|----------------------------------|----|-------------------------------|----|----|------|--------------|-----------------------|
| | | | | L | X | A | B | r | |
| 70035 05 02 | G 3/4" | 2 | 20 | 85 | 36 | 14 | 15,5 | W24,5x19h/1" | 0,172 |
| 70035 05 03 | G 3/4" | 3 | 20 | 121 | 36 | 14 | 15,5 | W24,5x19h/1" | 0,234 |
| 70035 05 04 | G 3/4" | 4 | 20 | 157 | 36 | 14 | 15,5 | W24,5x19h/1" | 0,295 |
| 70035 06 02 | G 1" | 2 | 25 | 104 | 42 | 14 | 17 | W24,5x19h/1" | 0,274 |
| 70035 06 03 | G 1" | 3 | 25 | 146 | 42 | 14 | 17 | W24,5x19h/1" | 0,363 |
| 70035 06 04 | G 1" | 4 | 25 | 188 | 42 | 14 | 17 | W24,5x19h/1" | 0,454 |