

## Hood Modular System 2518 001

Hoods

Code: 2518 001

Code: 2518 001 Control

Code: 2519 001 Subordinate



### DETAILS

Coloring White

---

Material Stainless steel

---

Texture Satin Finish - glass

---

Energy class D

---

Ceiling – false ceiling distance min 220 mm / max 310 mm

---

Full description Modular - modular ceiling suction system

---

Grease filters 1 grease filtre

---

Operation Suction hood (filtering modality not available)

---

Cut out 340x340 mm

---

Air exhaust hole  $\varnothing$  120 mm

---

Lighting Low consumption LED lighting

---

Notes: Fume exhaust ducts must have an internal diameter not lower than 120 mm

---

Notes: The height of the hood from the hob suggests the use of at least two suction modules, for adequate suction.

---

Air flow rate 400mc/h

---

Motor power 140W

---

Hood type Ceiling suction hood

---

Type of commands Remote control

---

Suction speed 4 operating speeds

---

## FEATURES

**Auto delayed shutdown** All the models with electronic interface can be programmed to turn off the suction at a postponed moment, so as to prolong the aeration of the room even after the cooking has been completed.

---

**Led lighting** Particular attention to energy saving with LED lighting systems. They assure a 10 times lower consumption and a 10 times longer duration. Our LED lights are designed to create an adequate comfort and safety in the cooking area.

---

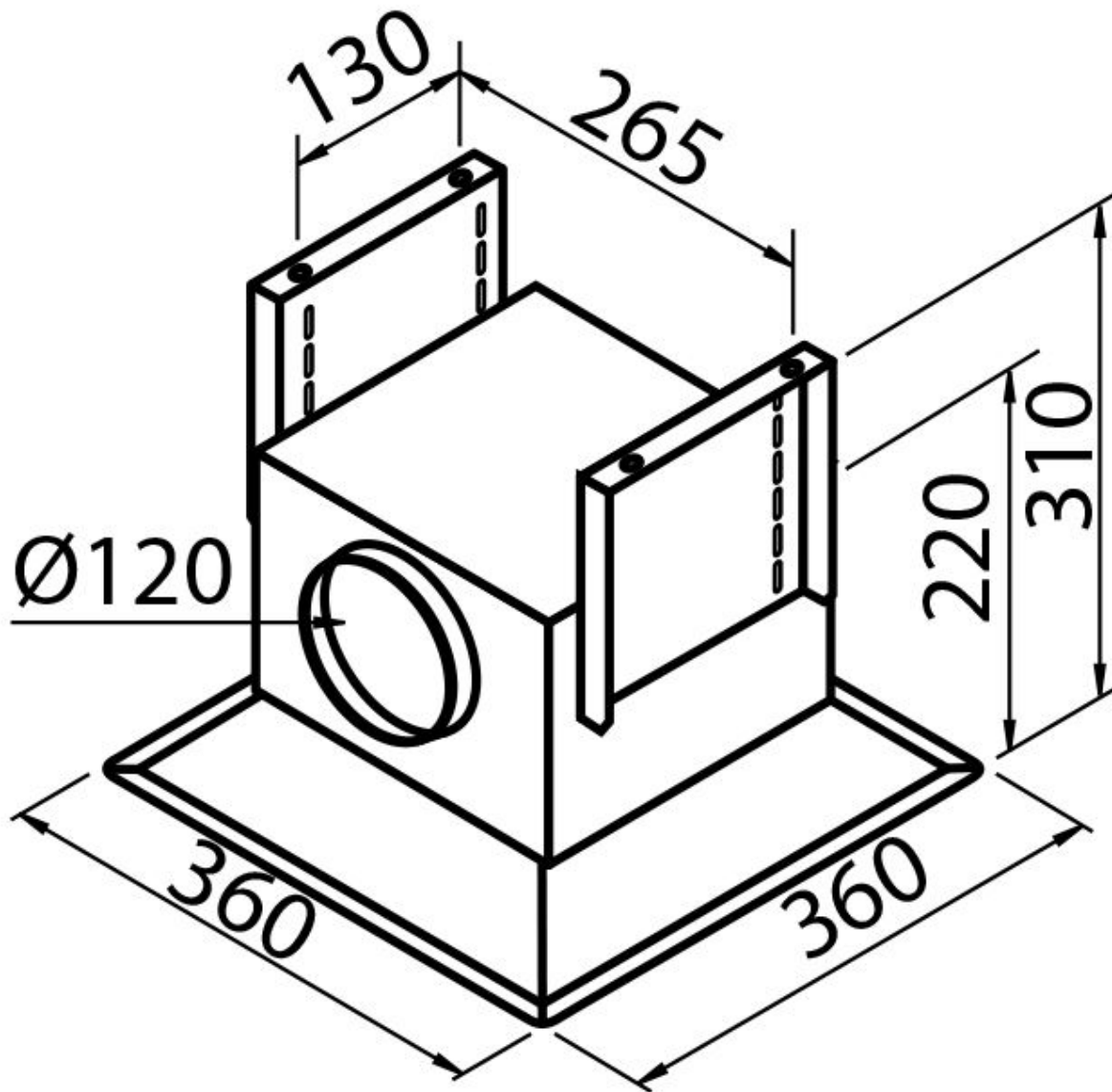
## Perimetric aspiration

The perimeter suction is a feature common to many Foster hoods. The filters are hidden by steel- or crystal plates and the suction occurs along their perimeter. This has aesthetic advantages but also functional ones: the cleaning is easier, the suction power and noise-level are improved. The depression which occurs in the perimeter area facilitates in fact the suction of the particles composing the fumes.

## Remote control

The ceiling suction systems and the Maya hoods are equipped with a remote control to easily activate all their functions from any position.

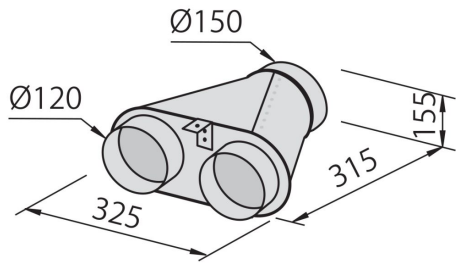
## TECHNICAL DATA



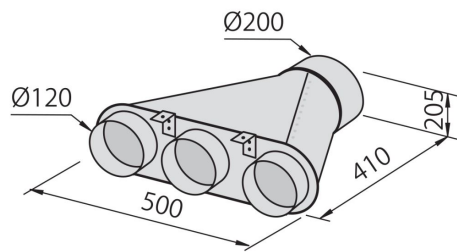
## GALLERY



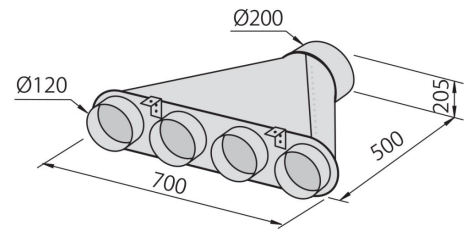
## OPTIONAL ACCESSORIES



Collector for 2 pipes 2523 000



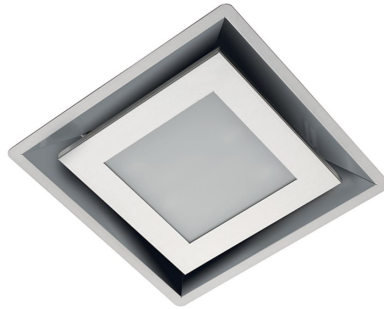
Collector for 3 pipes 2524 000



Collector for 4 pipes 2525 000



Flexible silencing canalization  
9700 602



Modular light 2520 001