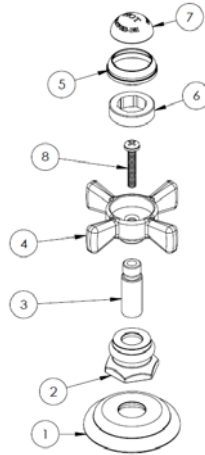
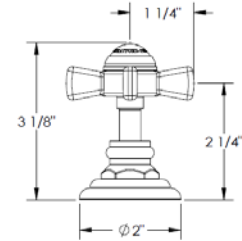


### HANDLE TRIMS

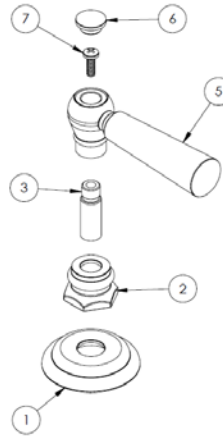
#### Preston (Code: S1)



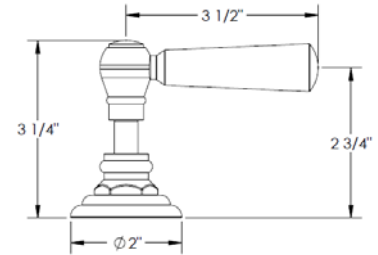
ITEM NO.	PART NUMBER	QTY.
1	S1-ESC	1
2	S1-ESC-NUT	1
3	S1-STEM	1
4	S1-HNDL-(COLD/HOT)	1
5	S1-CAP-RING	1
6	S1-CAP-ADAP	1
7	S1-PRCLN-INSRT-(PLN/COLD/HOT)	1
8	CR-PHMS 0.164-32x1x1-S	1



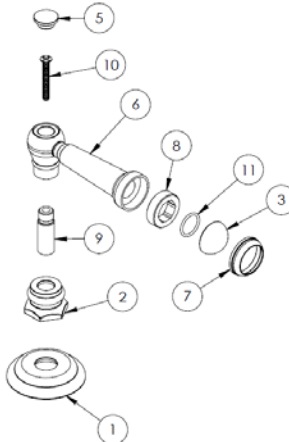
#### Nottingham (Code: S1A)



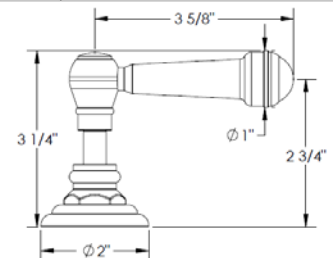
ITEM NO.	PART NUMBER	QTY.
1	S1-ESC	1
2	S1-ESC-NUT	1
3	S1-STEM	1
5	S1A-LVR	1
6	A-POST-CAP	1
7	CR-PHMS 0.164-32x0.5x0.5-S	1



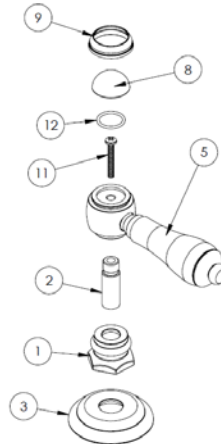
#### Waltham (Code: S2)



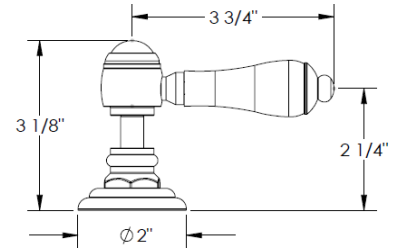
ITEM NO.	PART NUMBER	QTY.
1	S1-ESC	1
2	S1-ESC-NUT	1
3	S1-PRCLN-INSRT-(PLN/COLD/HOT)	1
5	A-POST-CAP	1
6	S2-LVR	1
7	S1-CAP-RING	1
8	S1-CAP-ADAP	1
9	S1-STEM	1
10	CR-FHMS 0.164-32x1.25x1.25-S	1
11	AS568 - 015	1



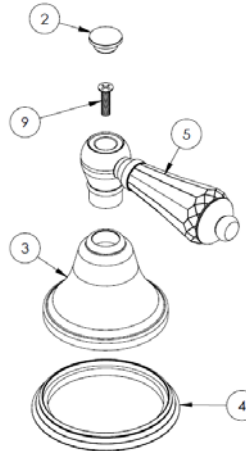
### Danbury (Code: S3)



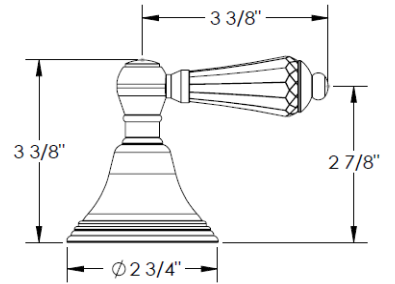
ITEM NO.	PART NUMBER	QTY.
1	S1-ESC-NUT	1
2	S1-STEM	1
3	S1-ESC	1
5	S3-PRCLN-LVR-INSRT	1
8	S1-PRCLN-INSRT-PLN	1
9	S1-CAP-RING	1
11	CR-PHMS 0.138-32x1x1-S	1
12	AS568 - 015	1



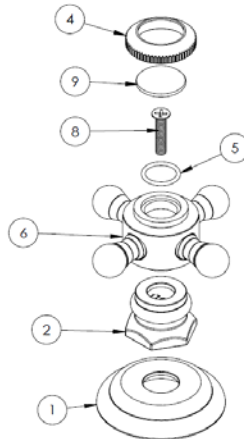
### San Francisco (Code: SW)



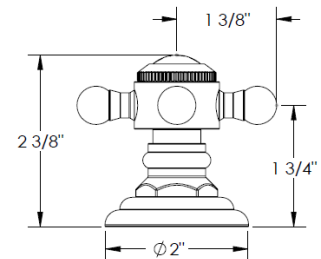
ITEM NO.	PART NUMBER	QTY.
2	A-POST-CAP	1
3	A-ESC	1
4	A-ESC-RING	1
5	SW-CRSTL-LVR-INSRT	1
9	CR-FHM1 0.164-32x0.625x0.625-S	1

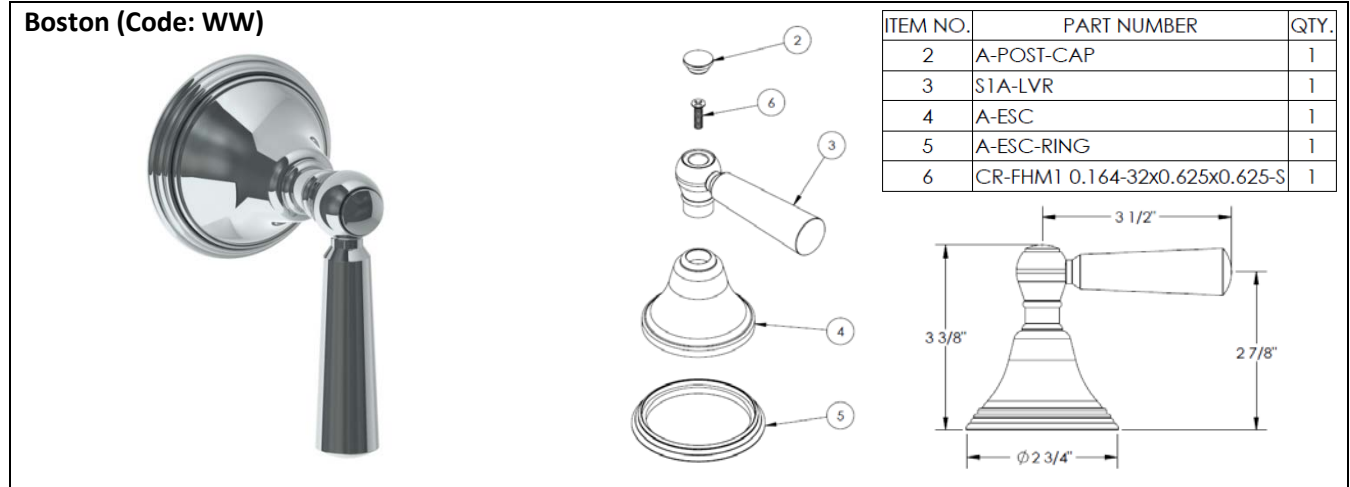


### Wales (Code: V)



ITEM NO.	PART NUMBER	QTY.
1	S1-ESC	1
2	S1-ESC-NUT	1
4	X-CAP-RING	1
5	AS568 - 014	1
6	V-POST	1
8	CR-FHM1 0.164-32x0.75x0.75-S	1
9	X-PRCLN-INSRT-PLN	1





### Specification from Finished Wall to Tip of Broach Stem

HANDLE TRIM #	MEASUREMENT (IN.)
S1/ S1A/ S2/ S3	2 1/4
SW	3
V	2 1/4
WW	3 1/2

Note: When fitting handle it may be necessary to shorten broach stem and/or threaded nipple to eliminate gap between handle and escutcheon

#### **IMPORTANT INSTALLATION INFORMATION**

- USE TEFLON TAPE OR PIPE SEALANT FOR THREADED CONNECTIONS
- DO NOT USE PLUMBER'S PUTTY ON ANY OF THE BRASS COMPONENTS  
This will cause the finish to tarnish and void the warranty. A non-corrosive Alkoxy Silicone is recommended.
- DURING SWEATING OF LINES DO NOT OVERHEAT CASTING  
Overheating may cause damage to internal mechanism
- COPPER ADAPTORS MAY BE REQUIRED TO COMPLETE YOUR INSTALLATION

**For technical support, please call 718-257-2800**