



MITER™ PLANTER

PRODUCT DATA





MITER™ PLANTER

PRODUCT DATA

The **Miter Planter** is as elegant as it is versatile. TENSL Ultra High Performance Concrete (UHPC) and beautiful stainless steel corner details bring a refined look to a modular design that can be arranged to suit any number of spaces and site conditions.

MATERIAL & CONSTRUCTION DETAILS

BODY
<ul style="list-style-type: none"> Planter body is made of TENSL UHPC with an intrinsic UHPC finish in Natural color. TENSL surfaces are protected by an invisible hydrophobic treatment. Slight variations in color and surface texture can occur due to the nature of the TENSL manufacturing process. The UHPC bottom of each planter has three holes for irrigation or drainage.

LINER
<ul style="list-style-type: none"> Miter Planters use independent, replaceable internal liners. Liners are molded from durable black polyethylene with a UL94HB fire rating. Liners can be specified with drain holes.

INSTALLATION & MAINTENANCE

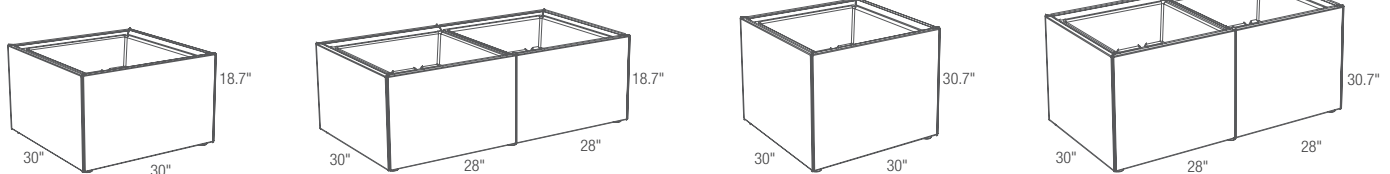
INSTALLATION
<ul style="list-style-type: none"> Miter Planters are freestanding; stainless steel levelers with nylon glides are included.

CORNER PLATES
<ul style="list-style-type: none"> Decorative corner plates are made of 4 mm laser-cut stainless steel with polished finish.

OPTIONAL INTERNAL SHELF
<ul style="list-style-type: none"> Optional internal shelves made of TENSL UHPC are available for an upcharge. Shelves fit into gussets in the liners, providing a shallower planting depth option.

MAINTENANCE
<ul style="list-style-type: none"> TENSL surfaces can be cleaned as needed using a soft cloth or brush with water and a mild detergent. Surfaces should be thoroughly rinsed and allowed to dry. Avoid abrasive cleaners.

NOMINAL DIMENSIONS

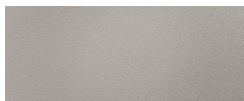


MODEL	OVERALL DIMENSIONS*	PLANTING DEPTH	VOLUME	WEIGHT**
SPMI-118	30" x 30" x 18.7" (762mm x 762mm x 475mm)	16.5" (419 mm) / 6" (152 mm)	26 gallons / 15 gallons (98 liters / 57 liters)	250 lbs (113 kg)
SPMI-218	30" x 56" x 18.7" (762mm x 1422mm x 475mm)	16.5" (419 mm) / 6" (152 mm)	52 gallons / 30 gallons (197 liters / 114 liters)	410 lbs (186 kg)
SPMI-130	30" x 30" x 30.7" (762mm x 762mm x 780mm)	28.5" (724 mm) / 6" (152 mm)	37 gallons / 15 gallons (140 liters / 57 liters)	350 lbs (159 kg)
SPMI-230	30" x 56" x 30.7" (762mm x 1422mm x 780mm)	28.5" (724 mm) / 6" (152 mm)	75 gallons / 30 gallons (284 liters / 114 liters)	545 lbs (247 kg)

*Miter Planters come with leveling feet with 1" of adjustability. These add a minimum of 0.5" and maximum of 1.5" to the overall height.

**Optional internal shelves add 17 lbs each to the total weight.

UHPC COLOR: NATURAL





MITER™ PLANTER

PRODUCT DATA

ENVIRONMENTAL CONSIDERATIONS

- Please refer to the Miter Planter Environmental Data Sheet for detailed environmental impact information.
- Miter Planters are composed primarily of natural materials local to manufacturing.
- All Miter Planters use a low energy, resource efficient manufacturing and curing process.
- All planter components disassemble at end of life and are fully recyclable.
- Low maintenance and extremely long service life.
- Manufactured in the USA.

MODEL NUMBERS AND DESCRIPTIONS

MODEL	DESCRIPTION
SPMI-118	Miter Planter, 18" height, single, TENSL UHPC
SPMI-218	Miter Planter, 18" height, double, TENSL UHPC
SPMI-130	Miter Planter, 30" height, single, TENSL UHPC
SPMI-230	Miter Planter, 30" height, double, TENSL UHPC

PRODUCT OPTIONS

The following option is available for an upcharge

Internal shelf

LEAD TIME: Please contact us to discuss your specific timing requirements.

PRICING: Please contact us at **800.451.0410** or **sales@forms-surfaces.com**. At Forms+Surfaces, we design, manufacture and sell our products directly to you. Our sales team is available to assist you with questions about our products, requests for quotes, and orders. Territory Managers are located worldwide to assist with the front-end specification and quoting process, and our in-house Project Sales Coordinators follow your project through from the time you place an order to shipment.

TO ORDER SPECIFY: Quantity and model. Quote/Order Forms are available on our website to lead you through the specification process in a simple checkbox format.

NOTE: Because different computers, monitors, and printers render colors and textures differently, actual finishes may vary from those shown here.