



## UNIVERSAL PLANTER

PRODUCT DATA





# UNIVERSAL PLANTER

PRODUCT DATA

The **Universal Planter** offers the beauty and performance of stainless steel, while remaining remarkably affordable. Stainless steel's natural finish provides aesthetic appeal and simplifies maintenance. For settings where color is appropriate, Universal Planters are unique in offering powdercoat colors applied over the same corrosion-resistant stainless steel used on uncoated versions. Their versatility makes them a premier choice for airports, malls, educational institutions, health care facilities, corporate buildings, entertainment venues, and other public spaces.

## MATERIAL & CONSTRUCTION DETAILS

## INSTALLATION & MAINTENANCE

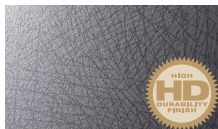
CONSTRUCTION	BODY FINISHES	INSTALLATION	MAINTENANCE
<ul style="list-style-type: none"> <li>Body and internal structure are both made entirely of stainless steel.</li> <li>Concrete bases are 3.25" thick (2.5" visible) and are available in Black Sand color.</li> <li>Drip pans included for 100- &amp; 190-gallon planters.</li> </ul>	<ul style="list-style-type: none"> <li>Planter comes in three standard stainless steel finishes, Sandstone, Diamond, and Satin, or can be powdercoated.</li> <li>See the Forms+Surfaces Powdercoat Chart for standard and premium color options. Custom RAL colors are available for an upcharge.</li> </ul>	<ul style="list-style-type: none"> <li>30 gallon Universal Planters may be used freestanding with or without adjustable stainless steel levelers &amp; nylon feet, freestanding with concrete base, or surface mounted directly to substrate or with concrete base.</li> <li>100- &amp; 190-gallon Universal Planters may be used freestanding without levelers or surface mounted directly to substrate.</li> <li>Anchors, levelers and stainless steel mounting screws are provided when specified.</li> </ul>	<ul style="list-style-type: none"> <li>Surfaces can be cleaned as needed using soft cloth or brush with warm water and a mild detergent. Avoid abrasive cleaners.</li> </ul>
LINERS	BODY PATTERNS		
<ul style="list-style-type: none"> <li>Universal Planters use independent, replaceable internal liners.</li> <li>Liners are molded from durable black polyethylene with a UL94HB fire rating.</li> </ul>	<ul style="list-style-type: none"> <li>Six different body patterns are available for an upcharge; see below and page 2 for standard patterns.</li> <li>Eco-Etch designs are applied using an advanced photolithographic bead-blasting system.</li> <li>Perforation patterns offer unique designs.</li> </ul>		

## STAINLESS STEEL BODY FINISH OPTIONS

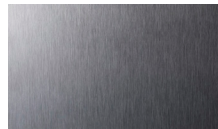
Sandstone and Diamond are High-Durability finishes, designated by the "HD" logo below, and are manufactured in a process that creates a work-hardened surface with enhanced resistance to abrasion and wear.



STAINLESS STEEL, SANDSTONE



STAINLESS STEEL, DIAMOND

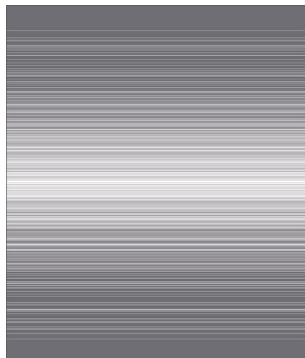


STAINLESS STEEL, SATIN

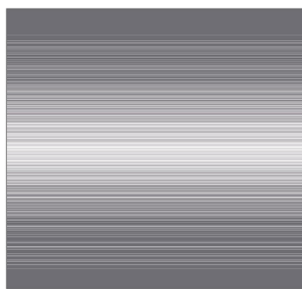
## BODY PATTERNS

### ECO-ETCH PATTERNS\*

Eco-Etch patterns are available for planters with Stainless Steel Satin finish only.

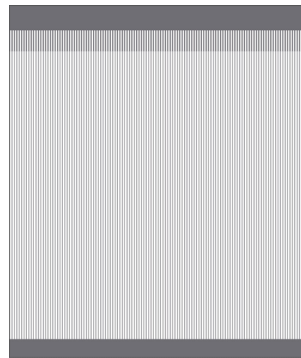


100 & 190 GALLON



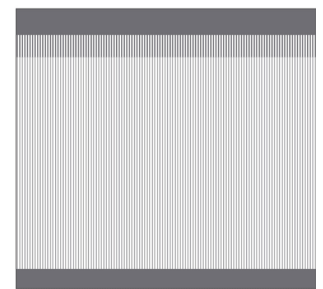
Horizon

30 GALLON



100 & 190 GALLON

Pinstripe



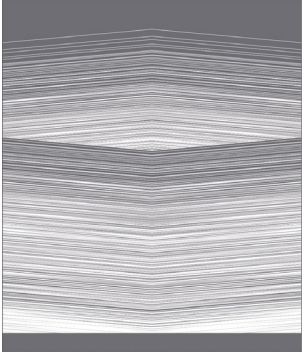
30 GALLON



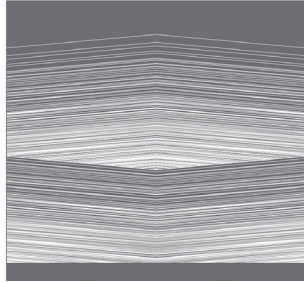
# UNIVERSAL PLANTER

PRODUCT DATA

## ECO-ETCH PATTERNS\* (CONTINUED)



100 & 190 GALLON

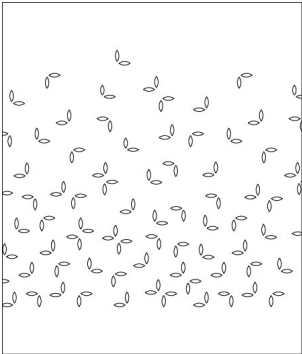


30 GALLON

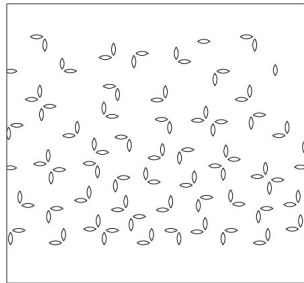
Prism

\*Eco-Etch patterns are shown with the etched areas in grey.

## PERFORATION PATTERNS

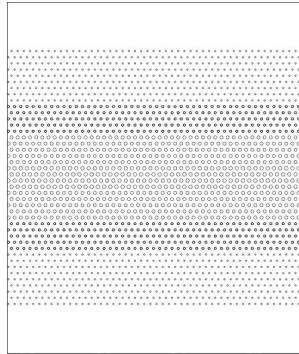


100 & 190 GALLON

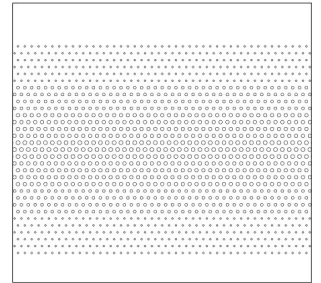


30 GALLON

Fall

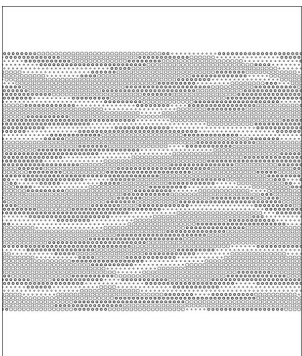


100 & 190 GALLON

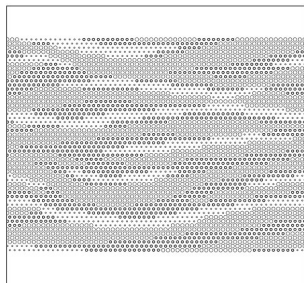


30 GALLON

Fade



100 & 190 GALLON



30 GALLON

Scape

T 800.451.0410 | [www.forms-surfaces.com](http://www.forms-surfaces.com)

**FORMS+SURFACES®**

© 2017 Forms+Surfaces® | All dimensions are nominal. Specifications and pricing subject to change without notice. For the most current version of this document, please refer to our website at [www.forms-surfaces.com](http://www.forms-surfaces.com).



# UNIVERSAL PLANTER

PRODUCT DATA

## NOMINAL DIMENSIONS

MODEL	CAPACITY	DIAMETER	HEIGHT*	WEIGHT**
SNUNI-30	30 gallons (114 liters)	23" (584 mm)	21.75" (552 mm)	53 lbs (24.04 kg)
SNUNI-100	100 gallons (379 liters)	36" (914 mm)	28.5" (724 mm)	101 lbs (45.81 kg)
SNUNI-190	190 gallons (719 liters)	48" (1219 mm)	34.5" (876 mm)	144 lbs (65.32 kg)

\*The height for the 30-gallon model is for the freestanding version with adjustable levelers. Optional concrete bases add approximately 1.75" to the overall height. The height for the 100-gallon and 190-gallon planters are for units resting directly on the substrate. Levelers and concrete bases are not available for these models.

\*\* Weight includes liner.

## ENVIRONMENTAL CONSIDERATIONS

- Please refer to the Universal Planter Environmental Data Sheet for detailed environmental impact information.
- Universal Planters have a high recycled content.
- All components are fully recyclable.
- Stainless steel construction ensures a long product life cycle.
- Standard powdercoat finishes are no-VOC; non-standard powdercoat finishes are no- or low-VOC, depending on color.
- Low maintenance.

## MODEL NUMBERS AND DESCRIPTIONS

MODEL	DESCRIPTION
SNUNI-30	30-gallon planter, stainless steel finish; levelers, surface mount, or concrete base
SNUNI-100	100-gallon planter, stainless steel finish; levelers or surface mount
SNUNI-190	190-gallon planter, stainless steel finish; levelers or surface mount

## PRODUCT OPTIONS

The following option is available for an upcharge

Add powdercoat color from F+S Powdercoat Chart	Add custom RAL powdercoat
Premium Texture Colors from Forms+Surfaces Powdercoat Chart	Add standard body pattern

**LEAD TIME:** 6 to 8 weeks. Shorter lead times may be available upon request. Please contact us to discuss your specific timing requirements.

**PRICING:** Please contact us at **800.451.0410** or **sales@forms-surfaces.com**. At Forms+Surfaces, we design, manufacture and sell our products directly to you. Our sales team is available to assist you with questions about our products, requests for quotes, and orders. Territory Managers are located worldwide to assist with the front-end specification and quoting process, and our in-house Project Sales Coordinators follow your project through from the time you place an order to shipment.

**TO ORDER SPECIFY:** Quantity, model, body finish, body pattern, and liner(s) with or without drain holes. Quote/Order Forms are available on our website to lead you through the specification process in a simple checkbox format.

**NOTE:** Because different computers will render colors and textures differently, actual colors and finishes may vary from those shown here.