

Filo completa la proposta degli scaldasalviette Irsap. Oggetto funzionale che sostituisce gli elementi d'arredo negli ambienti della casa e dell'ufficio. La sua linea snella e accattivante è caratterizzata dal diametro proporzionato dei tubi. Filo è disponibile in 4 altezze e 3 larghezze. Con l'inserimento della resistenza elettrica (optional) può funzionare anche nei periodi in cui l'impianto è spento.



Filo, altezza 1709 mm, larghezza 616 mm, Rosso - RAL 3000

Caratteristiche costruttive

radiatore scaldasalviette in acciaio con elementi orizzontali a tubi
tondi di diametro 12 mm
collettori laterali a sezione ovoidale 45x30 mm
filettature estremità collettore 1/2" Gas destra
pressione di esercizio massima ammessa 4 bar
temperatura di esercizio massima ammessa 95°C

Dotazione di serie

4 attacchi infratubo bianchi per Filo bianco o 4 attacchi
infratubo cromati per Filo colorato
valvola sfiato da 1/2"

Certificazioni



Plus



Dati tecnici

Modello	Profondità (mm)	Altezza (mm)	Larghezza (mm)	Interasse (mm)	Peso (kg)	Capacità (lt)	$\Delta t=50^{\circ}\text{C}$ (kcal/h)	$\Delta t=50^{\circ}\text{C}$ (Watt)	$\Delta t=40^{\circ}\text{C}$ (Watt)	$\Delta t=30^{\circ}\text{C}$ (Watt)	$\Delta t=20^{\circ}\text{C}$ (Watt)	Esponente	Funz. misto (Watt)
785 31 tubi 1 intervallo	30,0	785	466	406	6,00	2,20	324,0	376,0	286,0	201,0	123,0	1,223	400
785 31 tubi 1 intervallo	30,0	785	516	456	6,50	2,30	357,0	415,0	316,0	222,0	135,0	1,223	400
785 31 tubi 1 intervallo	30,0	785	616	556	7,50	2,50	424,0	493,0	375,0	264,0	161,0	1,223	400
1203 46 tubi 2 intervalli	30,0	1203	466	406	9,00	3,30	479,0	556,0	422,0	295,0	178,0	1,241	400
1203 46 tubi 2 intervalli	30,0	1203	516	456	9,80	3,50	528,0	614,0	466,0	326,0	197,0	1,241	400
1203 46 tubi 2 intervalli	30,0	1203	616	556	11,20	3,80	627,0	730,0	553,0	387,0	234,0	1,241	700
1467 54 tubi 3 intervalli	30,0	1467	466	406	10,80	4,00	569,0	661,0	501,0	351,0	212,0	1,241	700
1467 54 tubi 3 intervalli	30,0	1467	516	456	11,60	4,20	627,0	730,0	553,0	387,0	234,0	1,241	700
1467 54 tubi 3 intervalli	30,0	1467	616	556	13,30	4,60	744,0	865,0	656,0	459,0	277,0	1,241	700
1709 65 tubi 3 intervalli	30,0	1709	466	406	12,80	4,70	679,0	789,0	595,0	414,0	248,0	1,263	700
1709 65 tubi 3 intervalli	30,0	1709	516	456	13,80	5,00	749,0	871,0	657,0	457,0	274,0	1,263	700
1709 65 tubi 3 intervalli	30,0	1709	616	556	15,90	5,40	890,0	1.034,0	780,0	543,0	325,0	1,263	1000

(*) Grazie alle elevate prestazioni dei radiatori Filo, il Δt ideale per la progettazione a bassa temperatura è 30°C

Per Δt diversi da 50°C utilizzare la formula: $Q=Q_n (\Delta t / 50)^n$

Dotazione di serie

- 4 attacchi infratubo bianchi per Filo bianco o 4 attacchi infratubo cromati per Filo colorato • valvola sfiato da 1/2"

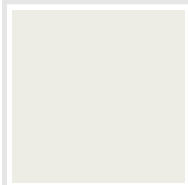
Colori e finiture

STANDARD



Bianco Standard
Cod. 01

CLASSIC



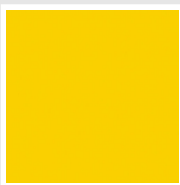
Bianco Edelweiss
Cod. 34



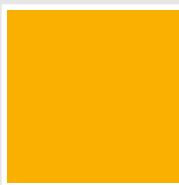
Avorio - RAL 1013
Cod. 02



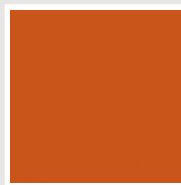
Beige Cream
Cod. 26



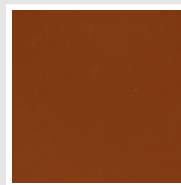
Giallo - RAL 1021
Cod. 04



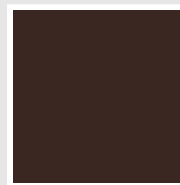
**Giallo Melone -
RAL 1028**
Cod. E7



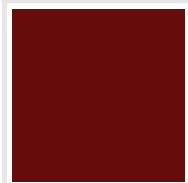
Arancio - RAL 2004
Cod. 17



**Marrone Ruggine -
RAL 8004**
Cod. E1



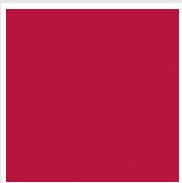
Marrone - RAL 8017
Cod. 09



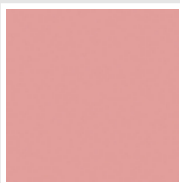
**Amaranto - RAL
3003**
Cod. 06



Rosso - RAL 3000
Cod. 05



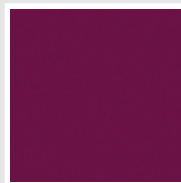
**Rosso Fragola -
RAL 3018**
Cod. Y3



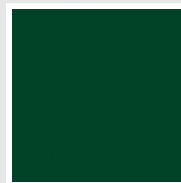
Rosa - RAL 3015
Cod. R2



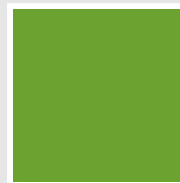
**Lilla Bluastro - RAL
4005**
Cod. R3



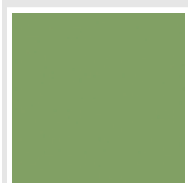
**Porpora Traffico -
RAL 4006**
Cod. R6



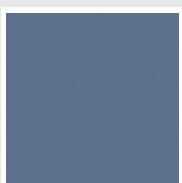
**Verde Bosco - RAL
6005**
Cod. 19



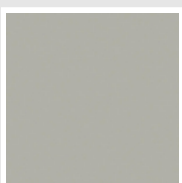
**Verde Erba - RAL
6018**
Cod. N3



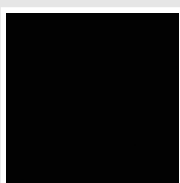
**Verde Salvia - RAL
6021**
Cod. E6



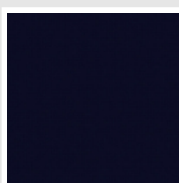
**Blu Pastello - RAL
5024**
Cod. G7



Grigio Manhattan
Cod. 03

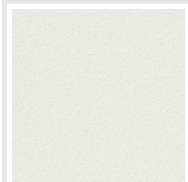


Nero - RAL 9005
Cod. 10

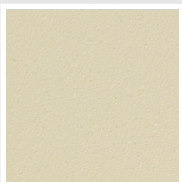


Deep Blue
Cod. 2F

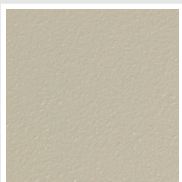
SPECIAL



Bianco Perla
Cod. 16



Quartz 1
Cod. 1C



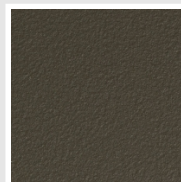
Sablé
Cod. Y4



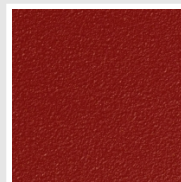
Quartz 2
Cod. 2C



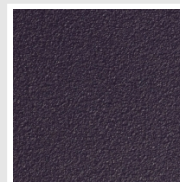
Sunstone
Cod. 2D



Bruno Tabacco
Cod. 1B



Flame Red
Cod. 7D



Purple Blue
Cod. 1D



Azurite 3
Cod. 6C

Grigio Medio
Cod. 4D

**Grigio Titanio
Metallizzato - RAL
9023**
Cod. L3

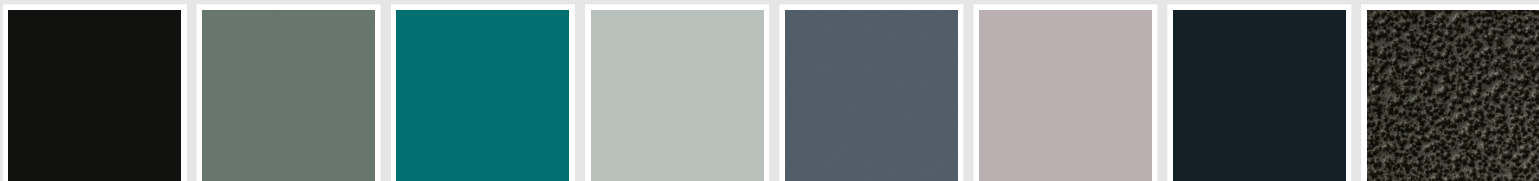
Grigio Perla
Cod. L6

Nero Grafite
Cod. 18

Grigio Quarzo
Cod. 31

Nero Satinato
Cod. 30

Bianco Opaco
Cod. J8



Nero Opaco
Cod. K1

Agave
Cod. 9N

Blu Baltico
Cod. 1P

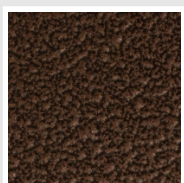
Ghiaccio
Cod. 3P

**Blu Colomba
Opaco - RAL 5014**
Cod. 4P

**Grigio Chiaro
Opaco**
Cod. 8N

**Grigio Cenere - Ral
7021**
Cod. G1

Grigio Martellato
Cod. 32



Rame Martellato
Cod. J4

RAL



Altri colori RAL (previa fattibilità)
Cod. ALTRIRAL

I colori rappresentati in questa cartella non sono da considerarsi impegnativi. I diversi processi tecnologici di verniciatura ed i materiali utilizzati per la realizzazione possono non avere una perfetta corrispondenza cromatica con il prodotto consegnato. L'azienda Irsap si riserva la facoltà di apportare in qualsiasi momento tutte le modifiche necessarie per il miglioramento del prodotto.