



# IB RUBINETTI

Collection

## HERMES

Article

### HR397

Description

**Four hole deck-mounted bath filler with overflow outlet connection**

Box Dimensions

**360 x 220 x 150 mm**

Weight

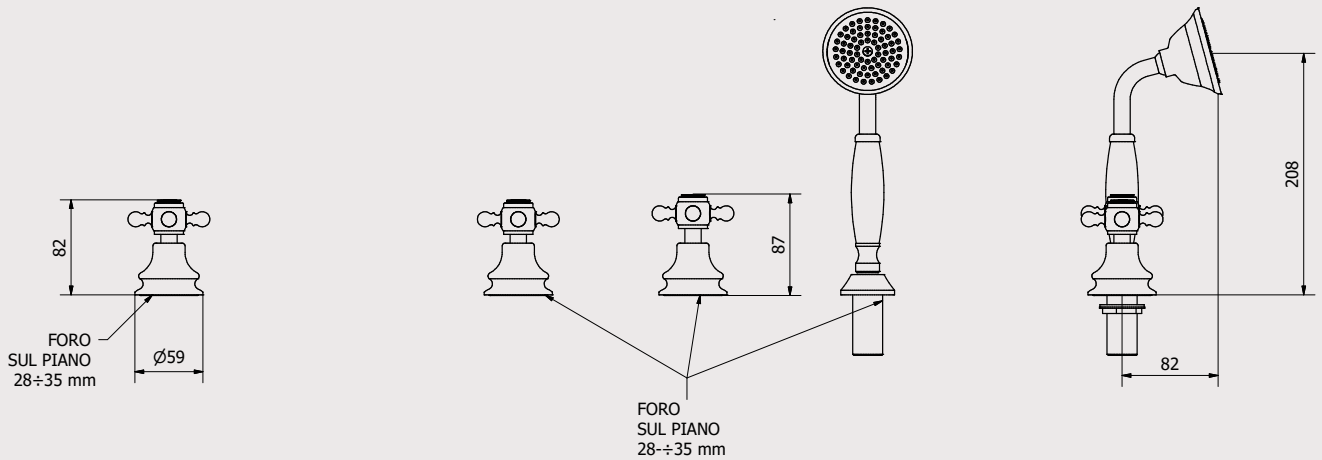
**5 kg**

Finishes

- **CC**  
CHROME
- **CF**  
BLACK CHROME
- **BG**  
GLOSSY WHITE
- **NG**  
GLOSSY BLACK
- **SS**  
BRUSHED NICKEL
- **CS**  
BRUSHED BLACK CHROME
- **BO**  
MATT WHITE
- **NP**  
MATT BLACK
- **OO**  
GOLD
- **BB**  
ANTIQUÉ BRONZE
- **II**  
PALE GOLD
- **RR**  
ANTIQUÉ COPPER
- **ORS**  
ROSE GOLD
- **ON**  
NATURAL BRASS
- **IS**  
BRUSHED PALE GOLD
- **HH**  
PVD CHOCOLATE



Dimensions



Headworks

**IB G1/2" Ceramics Headworks**

Treaded fitting

**Treaded fitting G1/2" male**

Aerator

Flow Rate (+/-10%)

<b>1 BAR</b>	<b>2 BAR</b>	<b>3 BAR</b>
19.7 l/min	27.5 l/min	33.1 l/min

Production

Material

**BRASS**  
According to CuZn35Pb2Al-B (CB752S)  
Max Lead content:1.36%

IB RUBINETTERIE s.p.a  
via dei Pianotti 3/5  
25068 Sarezzo (BS) - Italy -

T. +39 030 802101  
F. +39 030 803097  
info@ibrubinetterie.it

P.IVA 01785230986  
capitale sociale  
€420.000,00 i.v.

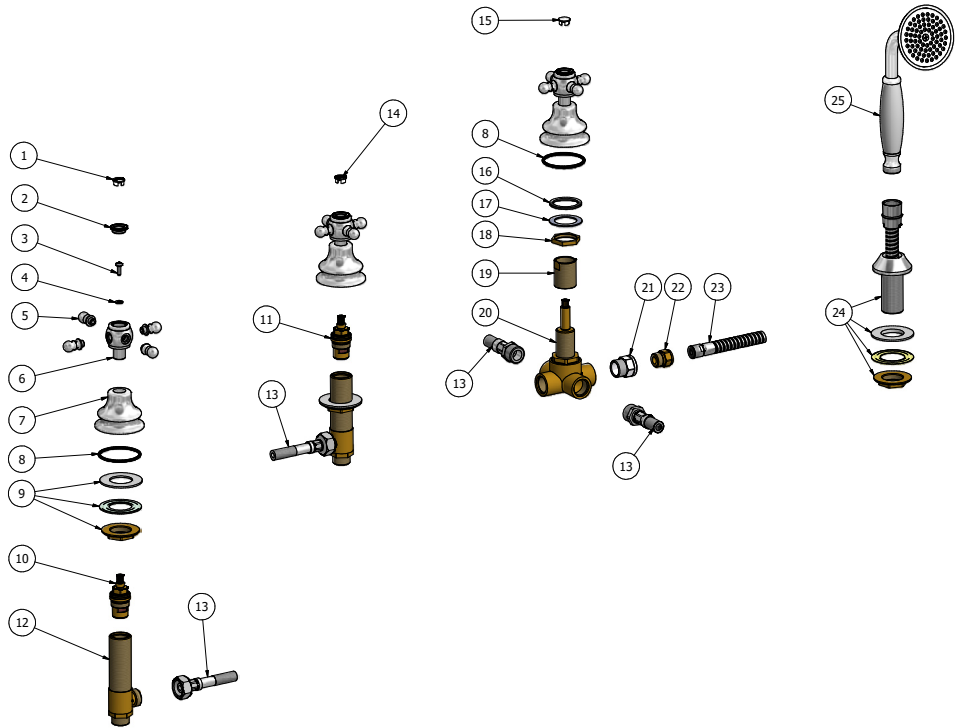
WWW.IBRUBINETTI.IT





# IB RUBINETTI

Parts list			
ELEM	CODE	DESCRIPTION	QT
1	AQ0013551	Handle's plug hot	1
2	AQ0009069	Cover Ø20 PLS	3
3	AQ0010985	Inox screw M4x12	3
4	AQ0010229	Inox washer M4	3
5	AQ0006591	Pin for handle	12
6	AC0003095	Lever Ø31.5 M8x1 H42	3
7	AC0007131	Bell Ø58.5 W26x19 H44.5	3
8	AQ0010096	OR 45.7x2.62 NBR 70 SH	3
9	AQ0010271	Fixing set	1
10	AQ0002135	Ceramic headwork 90° left	1
11	AQ0003930	Ceramic headwork 90° right	1
12	AS0002250	Washbasin upright W26x19	2
13	AQ0004760	Inox hose G1/2" F L600	2
14	AQ0013552	Handle's plug cold	1
15	AQ0013323	Neutral handle's plug	1
16	AQ0009716	Rubber packing 38x30x2	1
17	AQ0001650	Inox washer 39 x 26.5 x 1	1
18	AS0002010	Clamping nut 26 x 19 H5 CH30	1
19	AS0009995	Bush for headwork W26 x 19 W22 x 19	1
20	AQ0009455	Diverter 2 in 2 out	1
21	AQ0004860	Reduction G1/2" F G3/8" M	1
22	AS0009018	Nipples G3/8" M15x1 H21.2	1
23	AQ0009456	Inox hose M15x1 G1/2" F cone L200	1
24	AQ0006630	Handshower's support with fixing set	1
25	AQ0008031	Hand shower	1



**WARRANTY**

All IB Rubinetterie SpA products are warranted for 10 years from the date of purchase, for the following cases:

- Defects of casting, porosity and chrome plating.
- Operating defects caused by incorrect fabrication.

The warranty provides for repair or replacement of products with fabrication defects recognized by our technical office. There is no other type of compensation anche the merchandise must be returned FOB our warehouse. The warranty only cover surface defects (scatches, dings, etc.) on fitting that have not been installed and used, returned in its original packaging with all components. O-ring, gasket seals and components subject to wear proportional to use are warranted for 2 years.

**The warranty is void in the following cases:**

Error installing and putting the product into service.

Deterioration of finisched surfaces due to use of cleaning products containing acids or abrasive substances. Deterioration of surface with finishes other than chrome plating. Their durability is, in fact, dependent on the user's care and gentleness of use.

Deterioration of the fitting due incorrect installation.

Improper repairs and maintenance performed without the company's prior authorization.

The warranty from IB Rubinetterie SpA is not renewable.

**Cleaning**

We recommanded cleaning the finish surfaces with water and soap, using a soft cloth.

Do not use detergents that cointain hydrochloric acid or abrasive substances.

