

## Wall hung storage unit FUSSION CHROME - 2 drawers - 250 / 400

### Materials

- **Front Panels (Thickness = 16mm):**
  - Gloss white, Gloss grey, Gloss taupe: lacquered particle board lacquered with high gloss polyester UV paint.
  - Sbiancato, Alsacia, Natural, Bay Pine: laminated particle board. Edging design "Testa"
- **Side Panels (Thickness = 16 mm):**
  - Gloss white, Gloss grey, Gloss taupe: lacquered particle board lacquered with high gloss polyester UV paint.
  - Sbiancato, Alsacia, Natural, Bay Pine: laminated particle board. Edging design "Testa"
- **Internal Structure panels (Thickness = 16mm):** laminated particle board.
- **Drawers:** Exclusive design "Carbon-TX" wood drawer. Hidden guides of high range of extraction plus and amortiguado closing with regulation in height. Max. Load capacity 25 Kg.

\* All panels used in the manufacture of this unit are classed as E-1 grade with low level of formaldehyde content.

\*Edges according to design: PVC, ABS. (edged with PUR glue)



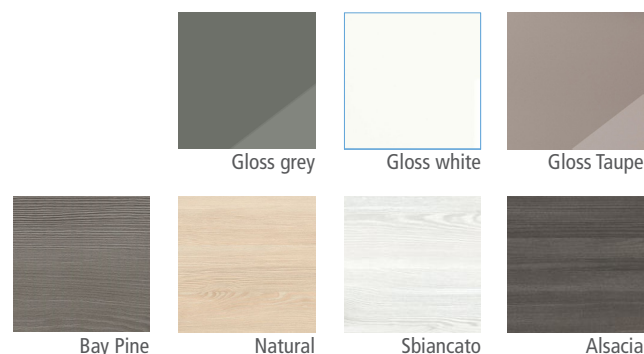
### Metal Fittings

- **Wall brackets:** high resistance wall brackets with two independent regulations. Certificate according to DIN 68840 (equivalent to 130kg of final load per set).
- **Handles:** metallic with anodized gloss or chrome finish according to model.

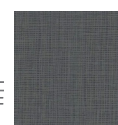
### Packaging Dimensions and weight (mm).

	250	400
Lenght mm.	<b>295</b>	<b>445</b>
Depth mm.	<b>500</b>	
Height mm.	<b>620</b>	
Net weight Kg.	<b>12,4</b>	<b>17,6</b>
Gross weight Kg	<b>13,8</b>	<b>19,2</b>

### Finishes



### Interior drawer finishes



### Dimensional sketch

