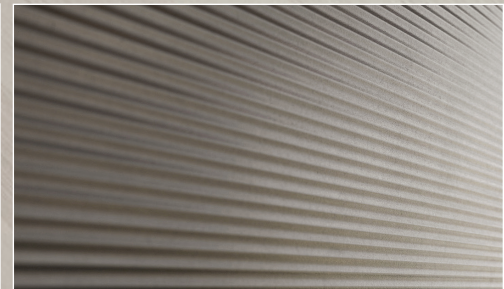
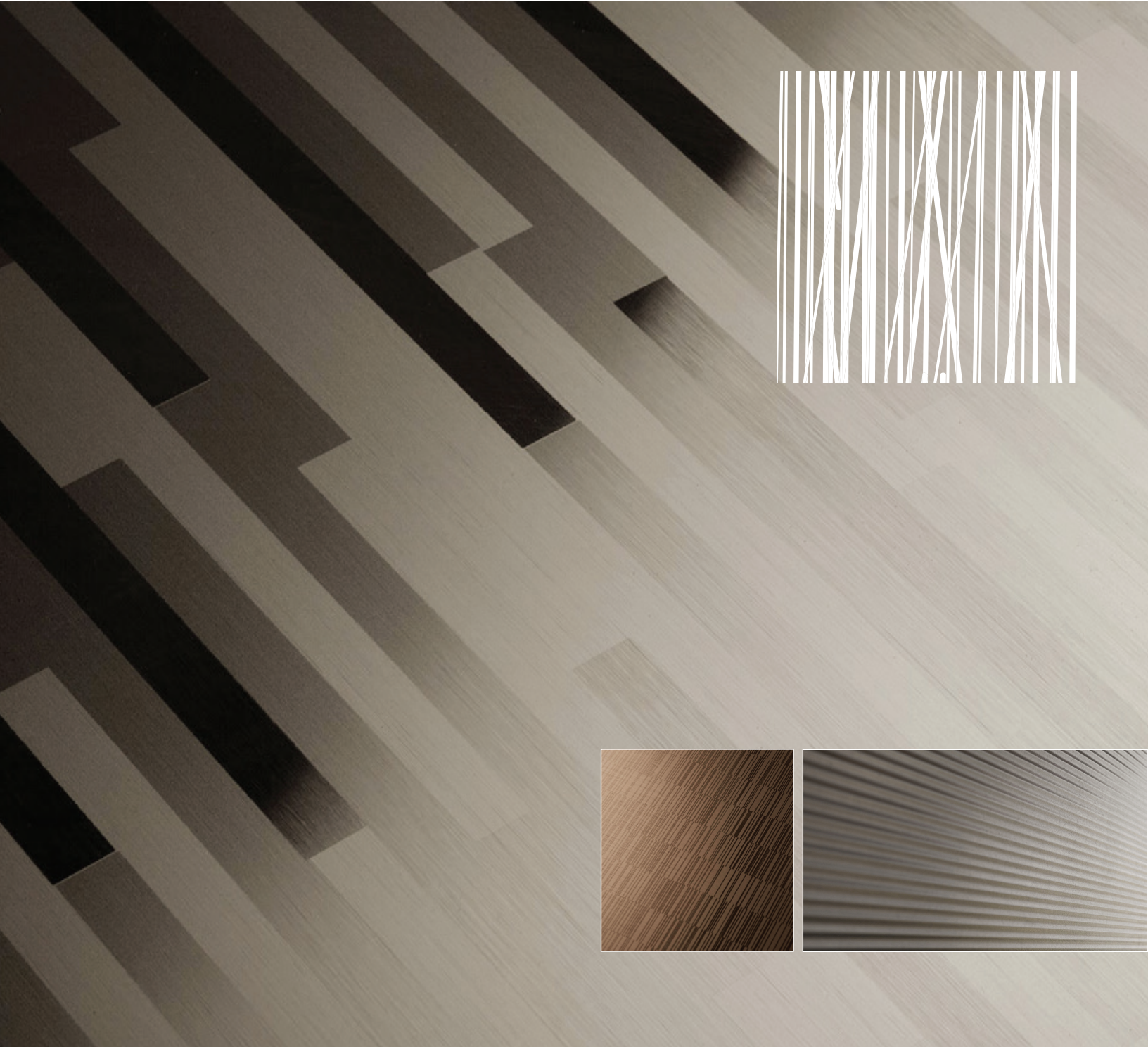




**FUSED METAL®**

PRODUCT DATA





# FUSED METAL®

PRODUCT DATA

Fused Metal is Forms+Surfaces' exclusive line of colored stainless steel. We use vapor deposition technology to fuse titanium alloys at the molecular level to stainless steel substrates. Fused Metal provides the durability and low maintenance of stainless steel with a range of rich color options that includes Fused Bronze, Fused Graphite, Fused Nickel Silver and Fused White Gold.

For applications that require exceptional resistance to abrasion and wear, select among our High-Durability finishes including Sandstone, Seastone and Linen. These work-hardened surfaces are extraordinarily durable and perfect for high-traffic public areas.

## MATERIAL DESCRIPTION

Fused Metal selections are defined by four basic parameters that are key to product specification:

COLOR	FINISH	PATTERN	TREATMENT
Choose a metal: Fused Bronze, Fused Graphite, Fused Nickel Bronze, Fused Nickel Silver or Fused White Gold.	A variety of distinctive finishes are available including standard and High-Durability options. Please see pages two through four for available finish options for each Fused Metal.	The pattern will be applied to the metal/finish combination you have selected. Standard Impression, Eco-Etch and Fusion patterns are shown on pages five through ten. Custom patterns can also be requested.	Ceramiloc treatment is an invisible, protective treatment that significantly increases the fingerprint resistance and maintenance ease of Fused Metal. Ceramiloc is available with any finish and pattern that does not incorporate Mirror finish.

## PRODUCTS & APPLICATIONS

SHEET GOODS	F+S SYSTEMS
<ul style="list-style-type: none"> <li>Includes our full line of stainless steel materials in standard sheet sizes or sheared to your specifications. Standard sheet size is nominal 48" x 120" (1219 mm x 3048 mm). Due to processing requirements of Fused Metal, actual usable sheet size is approximately 48" x 119.25" (1219 mm x 3029 mm)</li> <li>Fused Metal is available in two thicknesses. The .032" (0.8 mm) thickness has a standard weight of approximately 1.6 lbs./sq. ft (7.8 kg/sq. m) and the .063" (1.5mm) thickness weighs approximately 2.5 lbs./sq. ft (12.2 kg/ sq.m).</li> <li>Edge returns and many other add-on features are available.</li> <li>Fused Metal is ideal for trim, wainscoting, counter facings and more.</li> </ul>	<ul style="list-style-type: none"> <li>LEVELr Wall Cladding System</li> <li>LEVELr Column System</li> <li>LEVELe Wall Cladding System</li> <li>LEVELe Column System</li> <li>LEVELe Elevator Interiors</li> <li>LEVELc Elevator Interiors</li> <li>Elevator Door Skins</li> <li>Doors</li> </ul>

PROTECTIVE FILM
All Fused Metal supplied as sheet goods and in our systems products comes with a protective film for added protection during transportation, machining and installation. Even with the protective film, care should be taken while handling the product. We recommended leaving the film on during installation.

## MAINTENANCE & FIRE RATING

MAINTENANCE	FIRE RATING
Fingerprints and smudges can be removed using a non-chlorinated spray cleaner/degreaser such as Simple Green® and a microfiber cloth. Do not use harsh abrasives, acids or chlorine-based cleaners or cleaning tools containing carbon steel, such as steel wool or wire brushes.	Architectural Metals are inherently non-combustible and generally considered to be NFPA and IBC Class A fire rated and UBC Class 1 fire rated.





# FUSED METAL®

PRODUCT DATA

## FINISH OPTIONS

Fused Metal is available in a variety of distinctive finishes including standard and High-Durability options. High-Durability finishes—designated by the “HD” logo below—are manufactured in a process that creates a work-hardened surface with enhanced resistance to abrasion and wear.

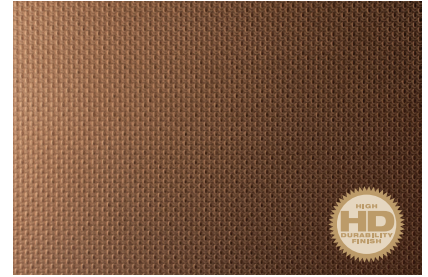
### FUSED BRONZE™



SANDSTONE



SEASTONE



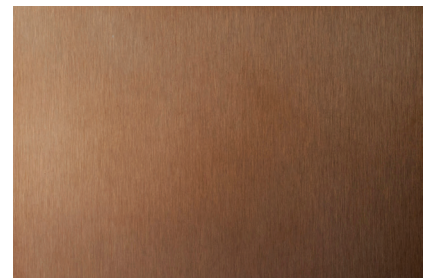
LINEN



DIAMOND



MIRROR



SATIN

### FUSED GRAPHITE™



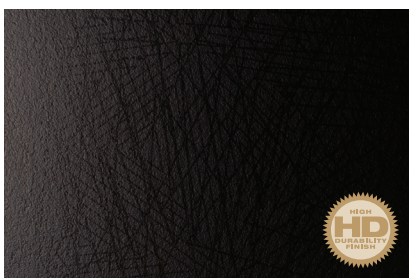
SANDSTONE



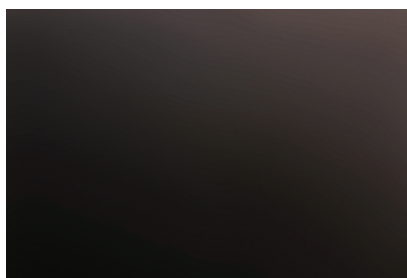
SEASTONE



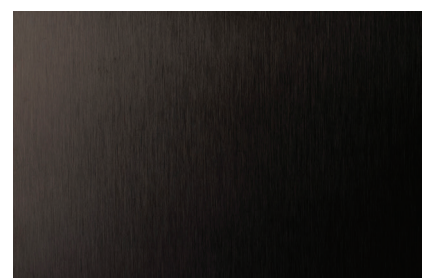
LINEN



DIAMOND



MIRROR



SATIN





# FUSED METAL®

PRODUCT DATA

## FUSED NICKEL BRONZE™



SANDSTONE



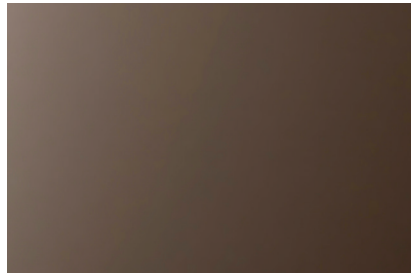
SEASTONE



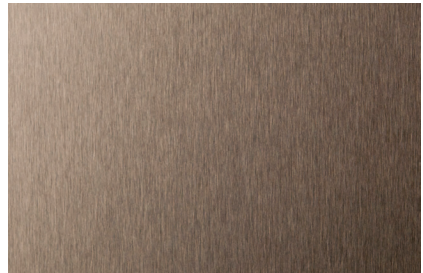
LINEN



DIAMOND



MIRROR



SATIN

## FUSED NICKEL SILVER™



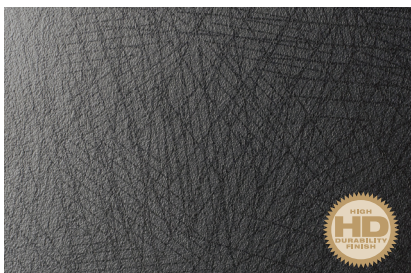
SANDSTONE



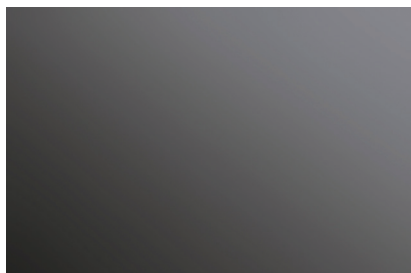
SEASTONE



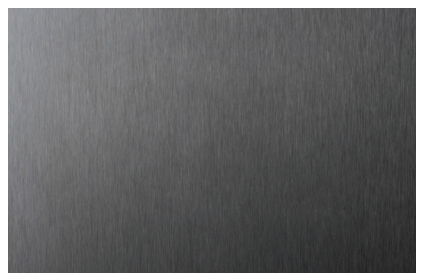
LINEN



DIAMOND



MIRROR



SATIN

*Note: Because different computers will render colors and textures differently, actual finishes may vary from those shown.*

T 1.800.451.0410 | F 412.781.7840 | [www.forms-surfaces.com](http://www.forms-surfaces.com)

**FORMS+SURFACES®**

© 2020 Forms+Surfaces® | All dimensions are nominal. Specifications and pricing subject to change without notice. For the most current version of this document, please refer to our website at [www.forms-surfaces.com](http://www.forms-surfaces.com).





# FUSED METAL®

PRODUCT DATA

## FUSED WHITE GOLD™



SANDSTONE



SEASTONE



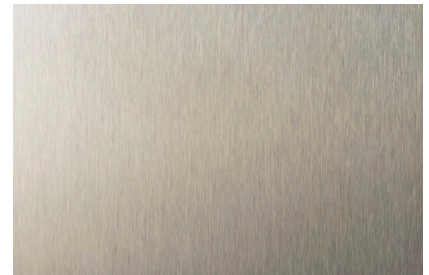
LINEN



DIAMOND



MIRROR



SATIN

*Note: Because different computers will render colors and textures differently, actual finishes may vary from those shown.*



# FUSED METAL®

PRODUCT DATA

## PATTERN OPTIONS

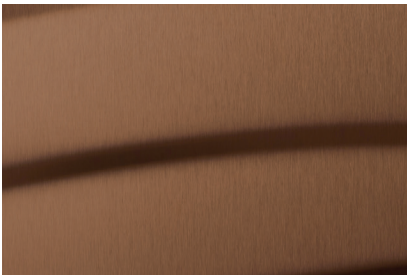
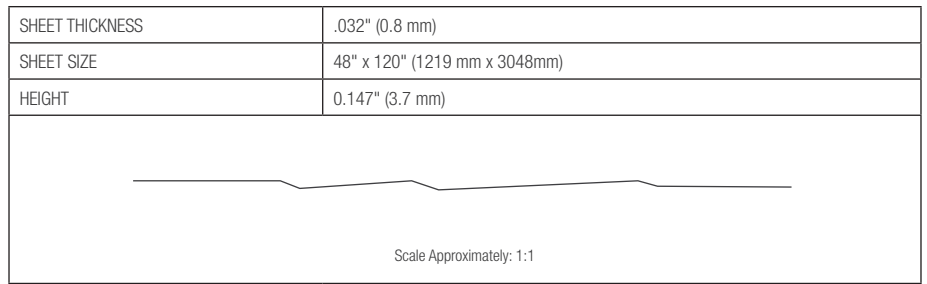
Patterns are optional applied designs that add visual interest and expanded customization potential to Fused Metal surfaces. From a functional standpoint, patterns pick up where metals and finishes leave off. Forms+Surfaces Fused Metal patterns are grouped into three broad categories: Impression, Eco-Etch and Fusion.

### IMPRESSION™ PATTERN OPTIONS

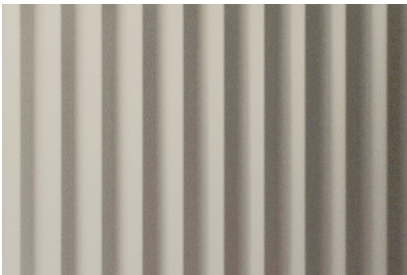
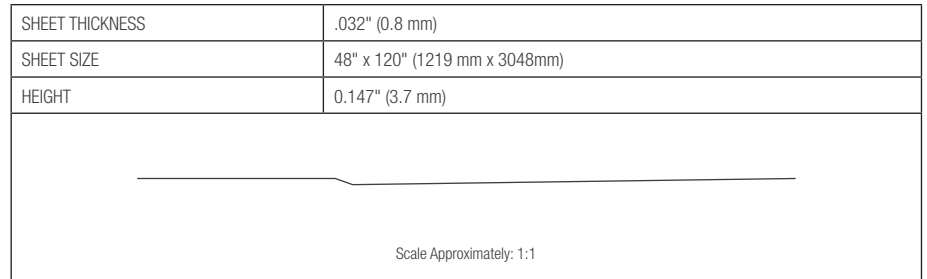
Forms+Surfaces proprietary manufacturing capabilities include large-scale stamping equipment that can apply unique, full-press patterns across an entire sheet of material using a single tool. The result is a series of beautiful, high-relief patterns that add visual impact, enhanced durability and a rich, tactile feel. Some Impression patterns are also available in other materials such as Stainless Steel and our exclusive Bonded Quartz and Bonded Metal®, making it easy to carry a design theme throughout an installation in a variety of materials.



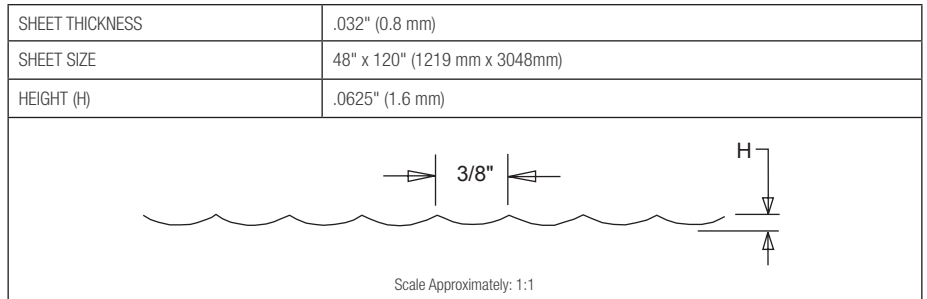
CHAMPAGNE™



CHARDONNAY™



DALLAS™



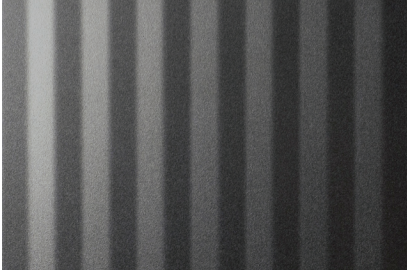
**Note:** Pattern is available in horizontal or vertical orientation





# FUSED METAL®

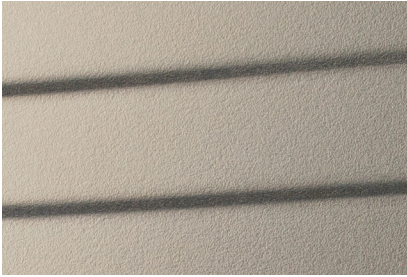
PRODUCT DATA



DENVER™

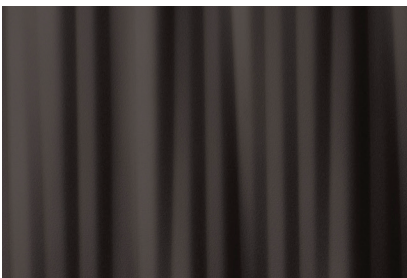
SHEET THICKNESS	.032" (0.8 mm)
SHEET SIZE	48" x 120" (1219 mm x 3048 mm)
HEIGHT (H)	.053" (1.3 mm)

**Note:** Pattern is available in horizontal or vertical orientation



DUNE™

SHEET THICKNESS	.032" (0.8 mm)
SHEET SIZE	48" x 120" (1219 mm x 3048 mm)



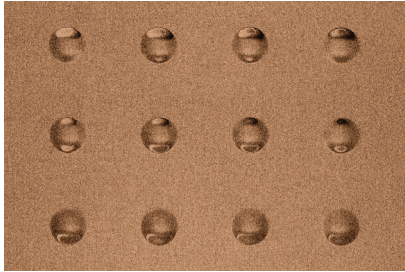
KALAHARI™

SHEET THICKNESS	.032" (0.8 mm)
SHEET SIZE	48" x 120" (1219 mm x 3048 mm)
HEIGHT	0.106" (2.7 mm)



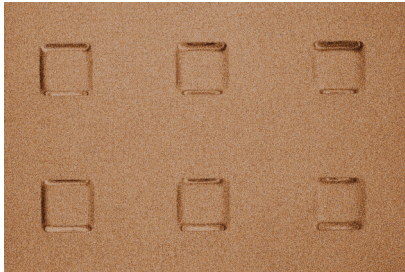
**FUSED METAL®**

PRODUCT DATA



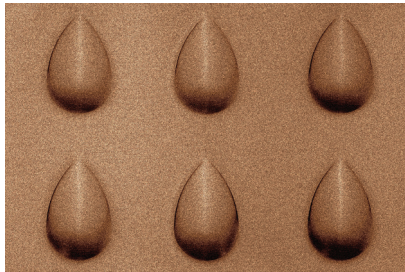
CIRCLE

EMBOSSURE SIZES	.312" dia.	.375" dia.	.50" dia.	.75" dia.	1.0" dia.
MINIMUM VERTICAL AND HORIZONTAL SPACING	2" c.c.	2" c.c.	2" c.c.	2" c.c.	3" c.c.
HEIGHT (H)	.08" (2 mm)				
SHEET THICKNESSES	.032" (0.8 mm)		.063" (1.5 mm)		
SHEET SIZE	48" x 120" (1219 mm x 3048mm)				



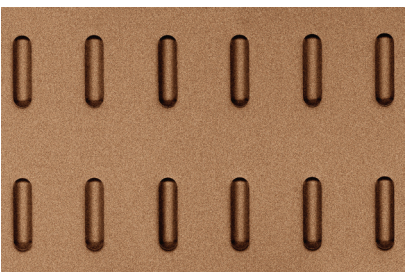
SQUARE

EMBOSSURE SIZES	.375" squ.	.50" squ.	.625" squ.	1" squ.	1.5" squ.
MINIMUM VERTICAL AND HORIZONTAL SPACING	2" c.c.	2" c.c.	2" c.c.	3" c.c.	4" c.c.
HEIGHT (H)	.06" (1.5 mm)				
SHEET THICKNESSES	.032" (0.8 mm)		.063" (1.5 mm)		
SHEET SIZE	48" x 120" (1219 mm x 3048 mm)				



TEARDROP™

EMBOSSURE SIZE	MINIMUM VERTICAL SPACING	MINIMUM HORIZONTAL SPACING	HEIGHT (H)
.88" x 1.4"	3" c.c.	3" c.c.	.134" (3.4 mm)
SHEET THICKNESSES	.032" (0.8 mm)		.063" (1.5 mm)
SHEET SIZE	48" x 120" (1219 mm x 3048 mm)		



TECH™

EMBOSSURE SIZE	MINIMUM VERTICAL SPACING	MINIMUM HORIZONTAL SPACING	HEIGHT (H)
.25" x 1"	1.5" c.c.	1" c.c.	.075" (1.9 mm)
SHEET THICKNESSES	.032" (0.8 mm)		.063" (1.5 mm)
SHEET SIZE	48" x 120" (1219 mm x 3048 mm)		





# FUSED METAL®

PRODUCT DATA

## ECO-ETCH®

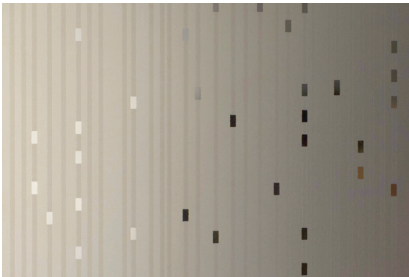
Beautiful etched designs are applied to Fused Metal using an advanced photolithographic bead-blasting system instead of acids or other harmful chemicals. Advantages of the Eco-Etch process include:

SIZE	SPEED	CONSISTENCY	ECOLOGICALLY RESPONSIBLE
The largest physical etching system in North America, our equipment can handle materials up to two meters wide by six meters long. Standard sheet size of 48" x 120" and standard sheet thicknesses of 0.8 mm and 1.5 mm are available.	The physical etching process can be completed in a fraction of the time required for traditional chemical etching.	Our proprietary computer-controlled system ensures an even blast pressure and a consistent finish, even on the largest surfaces.	Because our Eco-Etch is physically applied, it does not require etching acid or other harmful chemicals and no toxic waste is generated. The beads used in the process are contained within a closed chamber; used beads are recycled and returned to the process for reuse.

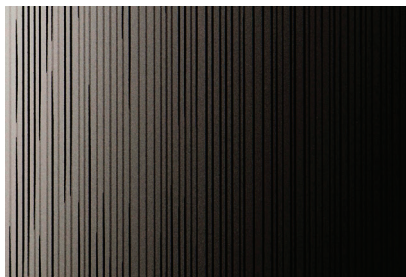
## STANDARD AND CUSTOM ECO-ETCH PATTERNS

Standard designs include both overall and full-sheet patterns. Eco-Etch doors and elevator door skins also come in their own range of patterns optimized for door face applications. Please note that our standard patterns are only starting points; the flexibility and speed of our Eco-Etch system allow a wealth of design options with artwork supplied by the specifier or developed by Forms+Surfaces.

### STANDARD ECO-ETCH PATTERNS



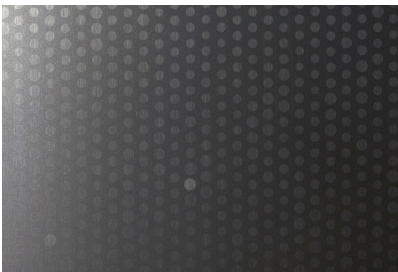
CITY LIGHTS™



CURRENT™



DASH™



FLICKER™



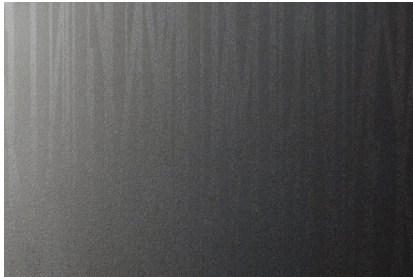
GLACIER™



MICA™



STANDARD ECO-ETCH PATTERNS cont.



REEDS™



SEAGRASS™



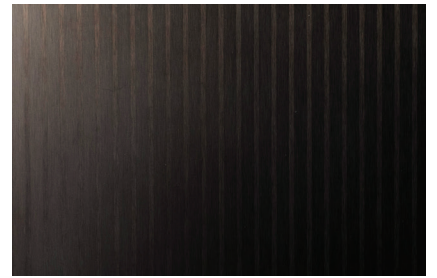
SEQUENCE™



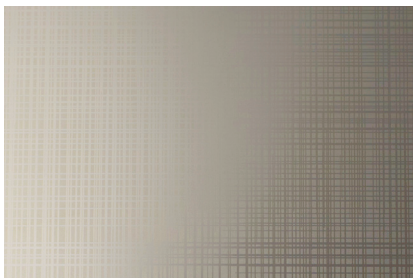
SILKWORM™



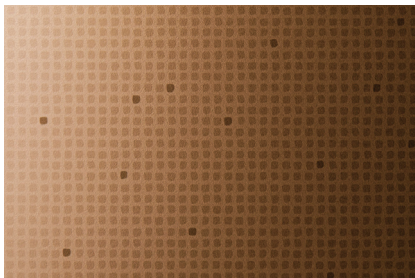
STACKS™



STRIPES™



THATCH™



TRACE™

*Usage rights, permissions, and/or copyrights for all submitted artwork are the responsibility of the submitting party. Forms+Surfaces is not responsible for obtaining or verifying these rights or permissions and cannot be held liable for conflicts of rights tied to submitted artwork.*



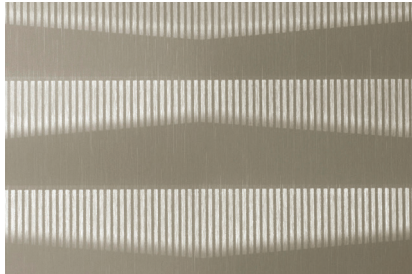


# FUSED METAL®

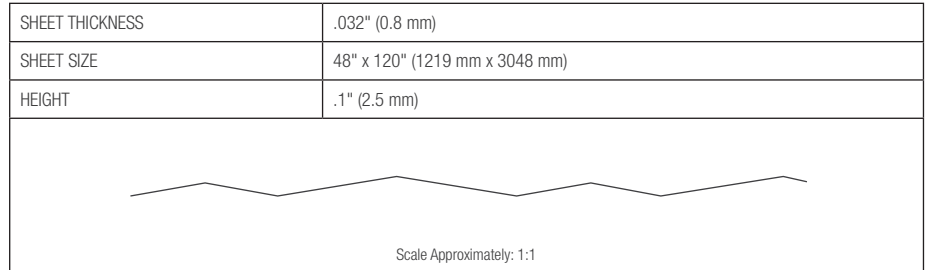
PRODUCT DATA

## FUSION™

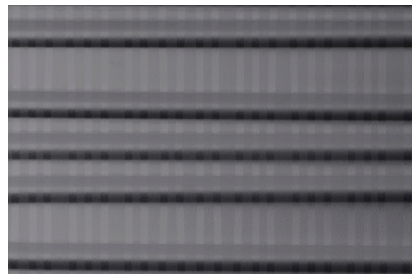
Fusion is a collection of surfaces created by the Forms+Surfaces Design Studio. As the name implies, each design is created by combining two or more pattern types, including Impression, Eco-Etch and Screens, to create a unique and visually intriguing surface.



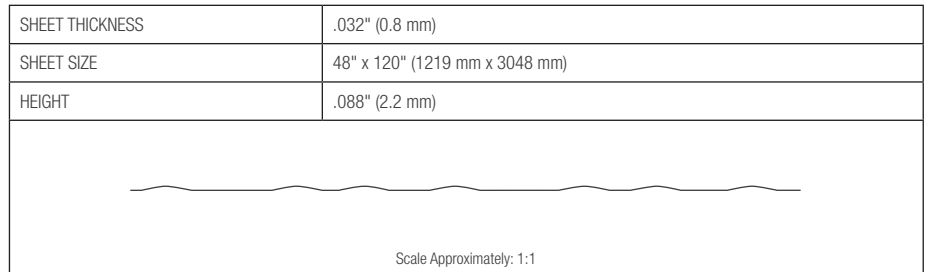
CARBON™



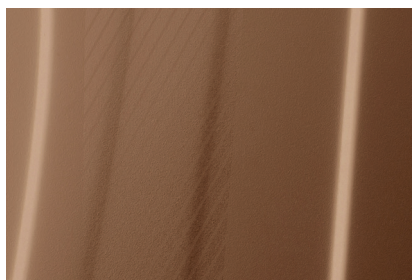
**Note:** Pattern is available in horizontal or vertical orientation



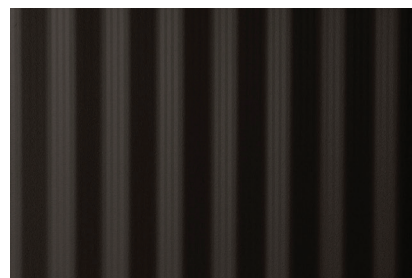
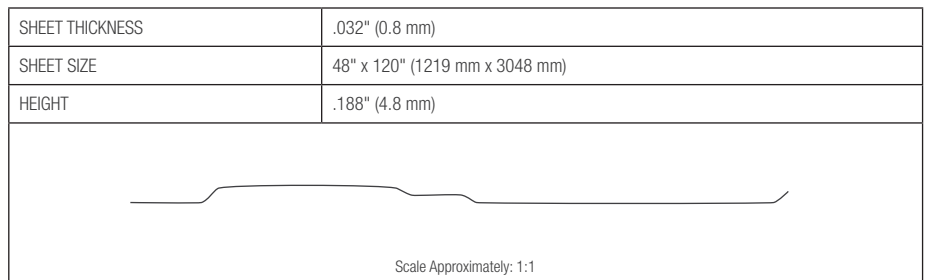
CINCH™



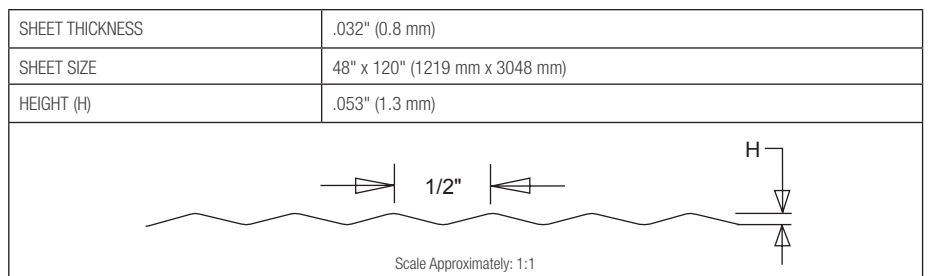
**Note:** Pattern is available in horizontal or vertical orientation



MESA™



MORAINÉ™



**Note:** Pattern is available in horizontal or vertical orientation

