

E10869



Collection: SINGULIER

Finish\*:



CP - Chrome

Main features:



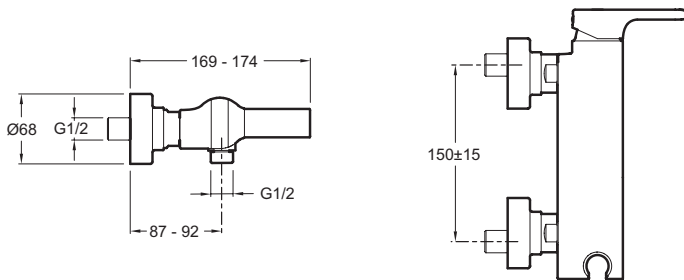
## Features

- WEIGHT: 3.1 kg
- INSTALLATION TYPE: 2 holes
- FLOW RATE: 13 l/min
- MECHANISM: Ceramic disc cartridge
- MECHANISM GUARANTEE: 5 years
- Temperature limiter ring
- MATERIAL: Metal
- TYPE: Single-lever
- CONNECTION: With connectors and wall escutcheons
- HOLE CONFIGURATION:  $150 \pm 15$
- The Singulier range combine elegant, sensuous lines with graceful curves that come together delicately to create a serene, understated look and tranquil sensibility.
- Non-return valve on shower outlet

## Consumer benefits

- Sensitive flow control.
- Integral handshower support

## Technical drawing



Product Specification: Single-lever wall shower mixer. E10869. Collection: SINGULIER. WEIGHT: 3.1 kg. MATERIAL: Metal. INSTALLATION TYPE: 2 holes. TYPE: Single-lever. FLOW RATE: 13 l/min. CONNECTION: With connectors and wall escutcheons. MECHANISM: Ceramic disc cartridge. HOLE CONFIGURATION:  $150 \pm 15$ . MECHANISM GUARANTEE: 5 years. The Singulier range combine elegant, sensuous lines with graceful curves that come together delicately to create a serene, understated look and tranquil sensibility.. Temperature limiter ring. Non-return valve on shower outlet.