

E10871



Collection: SINGULIER

Finish*:



CP - Chrome

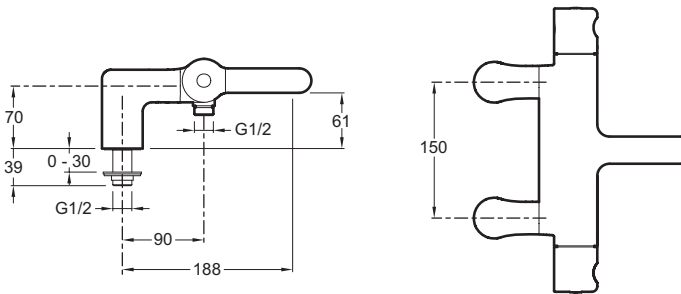
Main features:



Features

- WEIGHT: 4.6 kg
- INSTALLATION TYPE: 2 holes
- TYPE: Single-lever
- CONNECTION: With pillar connectors & O-rings
- HOLE CONFIGURATION: 150
- WARM BODY: Yes
- MECHANISM GUARANTEE: 5 years
- MATERIAL: Metal
- NORMS AND REGULATION: NF : II/A - ECAU : E3/1 C1 A1 U3
- FLOW RATE: 20 l/min
- MECHANISM: Expandable wax thermostatic cartridge
- SAFETY STOP: 40°C
- DIVERTER: Automatic diverter built into flow handle

Technical drawing



Product Specification: Thermostatic deck-mount bath/shower mixer. E10871. Collection: SINGULIER. WEIGHT: 4.6 kg. MATERIAL: Metal. INSTALLATION TYPE: 2 holes. NORMS AND REGULATION: NF : II/A - ECAU : E3/1 C1 A1 U3. TYPE: Single-lever. FLOW RATE: 20 l/min. CONNECTION: With pillar connectors & O-rings. MECHANISM: Expandable wax thermostatic cartridge. HOLE CONFIGURATION: 150. SAFETY STOP: 40°C. WARM BODY: Yes. DIVERTER: Automatic diverter built into flow handle. MECHANISM GUARANTEE: 5 years.

**Due to possible variations in computer and printer calibrations, technical factors and certain finish characteristics, the colors you see may not accurately portray the actual colors and are provided as a guide only.*