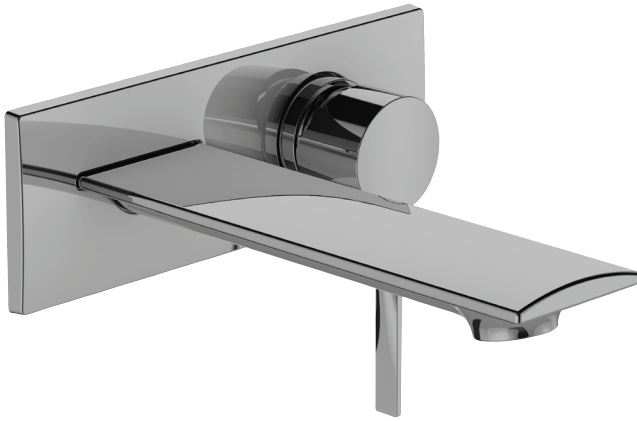


E9106



Collection: STANCE

Finish*:



CP - Chrome

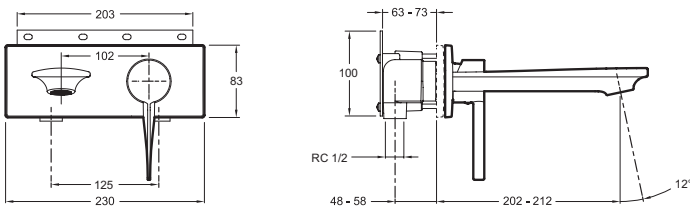
Main features:



Features

- WEIGHT: 4.9 kg
- INSTALLATION TYPE: Wall-mount
- FLOW RATE: 5 l/min
- SPOUT PROJECTION: 202-212
- INSTALLATION TYPE: 2 holes
- Integral anti-scale aerator
- MATERIAL: Brass
- TYPE: Single-lever
- HEIGHT UNDER SPOUT: 83
- MECHANISM: ceramic disc cartridge
- MECHANISM GUARANTEE: 5 years

Technical drawing



Product Specification: Tall single-lever washbasin mixer - wall mount. E9106. Collection: STANCE. WEIGHT: 4.9 kg. MATERIAL: Brass. INSTALLATION TYPE: Wall-mount. TYPE: Single-lever. FLOW RATE: 5 l/min. HEIGHT UNDER SPOUT: 83. SPOUT PROJECTION: 202-212. MECHANISM: ceramic disc cartridge. INSTALLATION TYPE: 2 holes. MECHANISM GUARANTEE: 5 years. Integral anti-scale aerator.