

E16029-4



Collection: JULY

Finish*:



CP - Chrome

Main features:



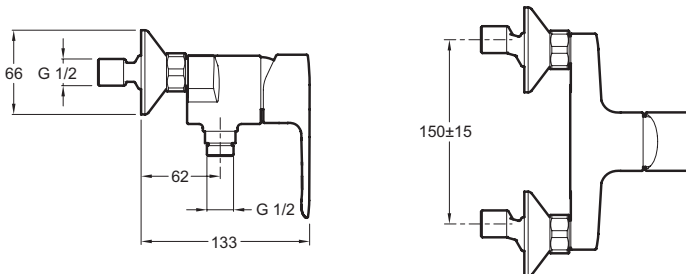
Features

- WEIGHT: 1.4 kg
- INSTALLATION TYPE: 2 holes
- FLOW RATE: 14 l/min
- MECHANISM: Ceramic disc cartridge
- WATER/ENERGY-SAVING: WATER-SAVING
- INSTALLATION TYPE: 2 holes
- The July range combines compact curved lines with robust manufacturing for hassle-free installation and use
- Non-return valve on shower outlet
- MATERIAL: Metal
- TYPE: Single-lever
- CONNECTION: With connectors and wall escutcheons
- HOLE CONFIGURATION: 150 ± 15
- WASTE : Without waste
- MECHANISM GUARANTEE: 5 years
- Adjustable temperature limiter ring

Consumer benefits

- Sensitive flow control

Technical drawing



Product Specification: Single-lever wall shower mixer. E16029-4. Collection: JULY. WEIGHT: 1.4 kg. MATERIAL: Metal. INSTALLATION TYPE: 2 holes. TYPE: Single-lever. FLOW RATE: 14 l/min. CONNECTION: With connectors and wall escutcheons. MECHANISM: Ceramic disc cartridge. HOLE CONFIGURATION: 150 ± 15 . WATER/ENERGY-SAVING: WATER-SAVING. WASTE : Without waste. INSTALLATION TYPE: 2 holes. MECHANISM GUARANTEE: 5 years. The July range combines compact curved lines with robust manufacturing for hassle-free installation and use. Adjustable temperature limiter ring. Non-return valve on shower outlet.

*Due to possible variations in computer and printer calibrations, technical factors and certain finish characteristics, the colors you see may not accurately portray the actual colors and are provided as a guide only.