

STRAYT - 3-hole deck-mount washbasin mixer

Jacob Delafon
PARIS

E37331



Collection: STRAYT

Finish*:



CP - Chrome

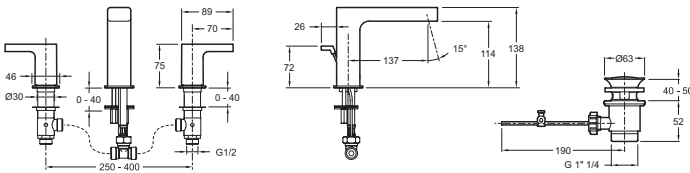
Main features:



Features

- WEIGHT: 4.2 kg
- INSTALLATION TYPE: 3 holes
- TYPE: Mixer
- HEIGHT UNDER SPOUT: 138
- CONNECTION: With supply hoses
- WASTE : With waste
- DRILLING: Ø 35 mm
- MATERIAL: Metal
- NORMS AND REGULATION: ACS : 15 ACC LY 081
- FLOW RATE: 5 l/min
- SPOUT PROJECTION: 137
- MECHANISM: Ceramic disc valves
- MECHANISM GUARANTEE: 5 years
- Metal waste

Technical drawing



Product Specification: 3-hole deck-mount washbasin mixer. E37331. Collection: STRAYT. WEIGHT: 4.2 kg. MATERIAL: Metal. INSTALLATION TYPE: 3 holes. NORMS AND REGULATION: ACS : 15 ACC LY 081. TYPE: Mixer. FLOW RATE: 5 l/min. HEIGHT UNDER SPOUT: 138. SPOUT PROJECTION: 137. CONNECTION: With supply hoses. MECHANISM: Ceramic disc valves. WASTE : With waste. MECHANISM GUARANTEE: 5 years. DRILLING: Ø 35 mm. Metal waste.

*Due to possible variations in computer and printer calibrations, technical factors and certain finish characteristics, the colors you see may not accurately portray the actual colors and are provided as a guide only.