

indoor

Traditional Rectangular dining table / mesa rectangular 260 cm / 102.25"

Studio expormim, 2012

T417

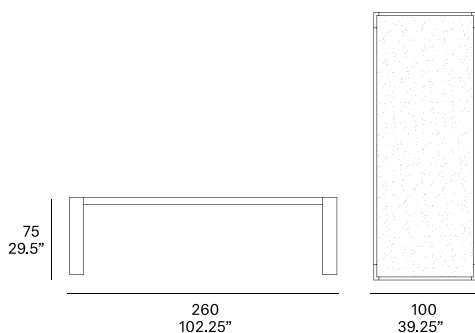


Structure made of solid wood profile from European oaks.
Possibility of customizing the top by using three different types
of Kerlite® porcelanic finish.

Estructura fabricada en perfilera maciza de roble europeo.
Posibilidad de personalizar la tapa mediante el empleo de tres
tipos diferentes de acabado porcelánico Kerlite®.

Shipment details

Qty	1 dining table (1 box)
Volume	0,72 m3 / 25.4 ft3
Gross weight	85 kg / 187 lb
Net weight	78 kg / 172 lb
Item dimensions (width x depth x height)	260 x 100 x 75 cm 102.25" x 39.25" x 29.5"



Structure / estructura

solid wood / madera maciza



water varnished



white stained



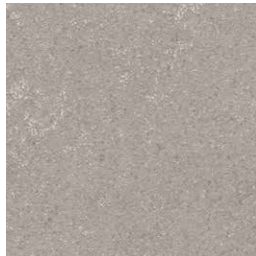
grey stained



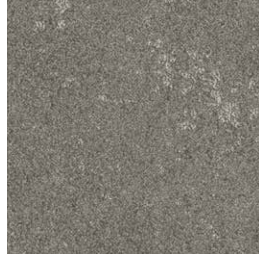
black stained

Tabletop / tapa mesa

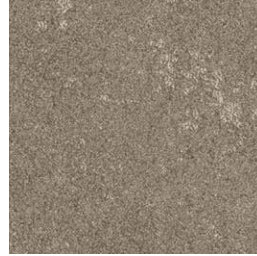
Kerlite®



K5 Perle



K6 Cendre



K7 Noisette