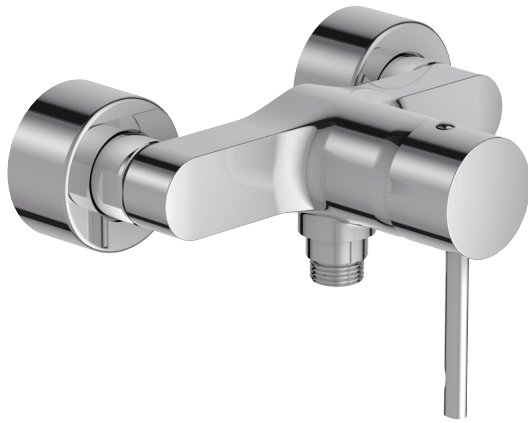


E45533



Collection: CUFF

Finish*:



CP - Chrome

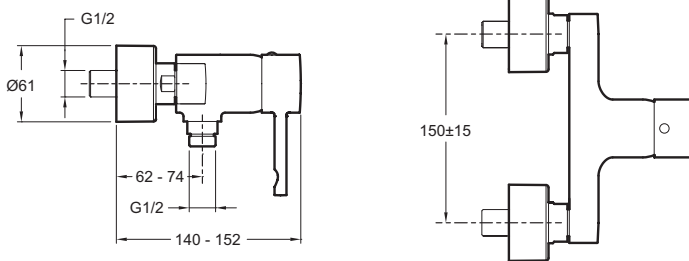
Main features:



Features

- WEIGHT: 1.7 kg
- INSTALLATION TYPE: Wall-mount
- TYPE: Single-lever
- CONNECTION: With connectors and wall escutcheons
- HOLE CONFIGURATION: 150 ± 15
- NON-RETURN VALVE: Yes
- Non-return valve on shower outlet
- MATERIAL: 54
- NORMS AND REGULATION: ACS (Certificate of Sanitary Compliance):10 ACC LY 004
- FLOW RATE: 14 l/min under 3 bar.
- MECHANISM: Ceramic disc cartridge
- INSTALLATION TYPE: 2 holes
- MECHANISM GUARANTEE: 5 years
- Ceramix disc cartridge

Technical drawing



Product Specification: Wall-mount shower mixer. E45533. Collection: CUFF. WEIGHT: 1.7 kg. MATERIAL: 54. INSTALLATION TYPE: Wall-mount. NORMS AND REGULATION: ACS (Certificate of Sanitary Compliance):10 ACC LY 004. TYPE: Single-lever. FLOW RATE: 14 l/min under 3 bar.. CONNECTION: With connectors and wall escutcheons. MECHANISM: Ceramic disc cartridge. HOLE CONFIGURATION: 150 ± 15 . INSTALLATION TYPE: 2 holes. NON-RETURN VALVE: Yes. MECHANISM GUARANTEE: 5 years. Non-return valve on shower outlet. Ceramix disc cartridge.