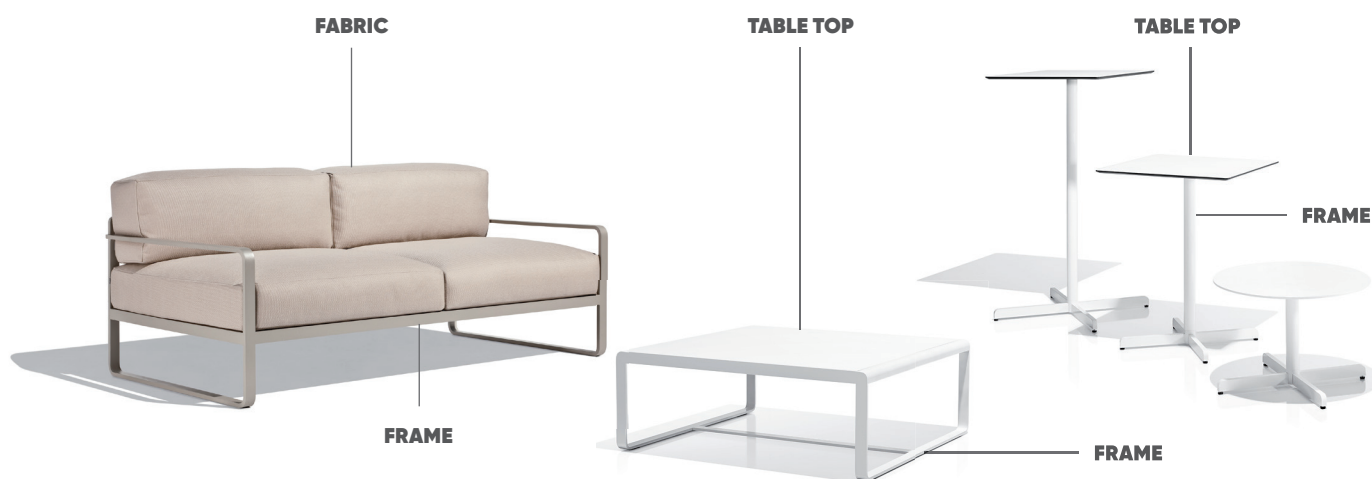


# Finishes SIT collection

by Andrés Bluth

bivaq



## ALUMINUM FRAME PAINTING COLOR

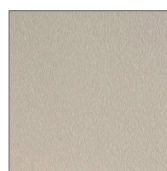
Aluminum is an environmental friendly, light and tough metal with an excellent strength to weight ratio and corrosion resistance, making it an ideal material for outdoor furniture. By powder coating we give to the aluminum an advanced method of applying protective, resistance to chemicals, corrosion, UV weathering and decorative coating. Choose your Bivaq furniture finish among all these painting colors:



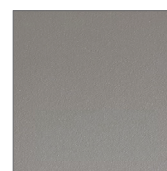
10- white text



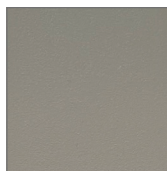
11- ivory text



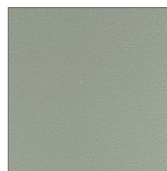
29- stone



14- grey aluminum



39- beige grey



12- cement green



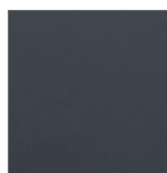
15- olive green



13- maroon oxide



26- brown cobre



23- antracita

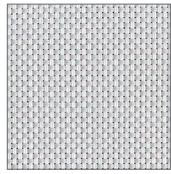


34- grafito

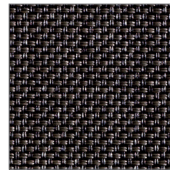
**FABRIC**

**Vinytex fabrics**

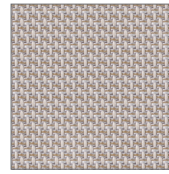
Vinytex is a generic term for a woven, open-mesh fabric made from a vinyl coated, high strength polyester yarn. Combines a textile appearance with the extreme weather resistant properties ensuring lasting colour with no sag effect. This fabric is hard wearing, wipeable, quick-drying and resistant to fading, mildew and wear & tear under even the most severe weather conditions.



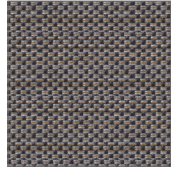
08- white pearl A



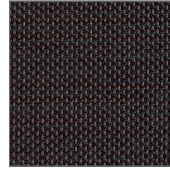
05- tobacco A



61- stone beige D



52- grafito beige D



63- eden tobacco D



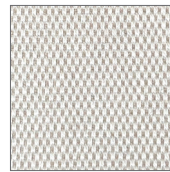
77- eden black D

**Acrylic fabrics**

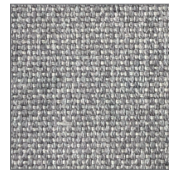
The acrylic fabrics that Bivaq uses in its collections are manufactured with solution dyed acrylic fiber, a process which adds the pigments before the fibers are extruded, this allows the color to be mixed into the solution thoroughly, bringing the color all the way through the fiber once it is extruded, creating a colorfast fabric much stronger than that obtained by dyeing the thread. As a result, we have a fabric that is less vulnerable to UV radiation and the guarantee that its colors will remain permanent and bright for many years. Other characteristics of these fabrics are that they are very soft touch, water repellent, stain proof, do not fade in the sun, hardwearing and mould resistant.



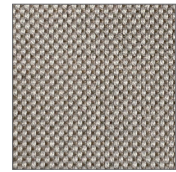
79- white pearl char. C



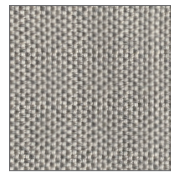
38- crudo beige B



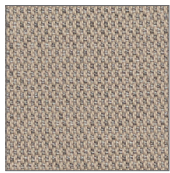
34- grey pearl B



87- heather chalk B



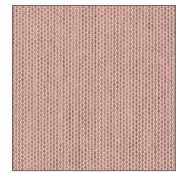
83- sack sand C



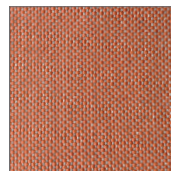
58- sand grey D



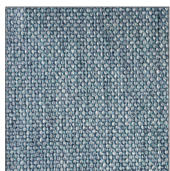
31- toast B



53- blush peach B



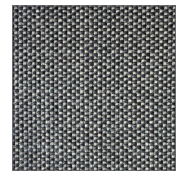
85- peach flamingo B



43- blue grey B



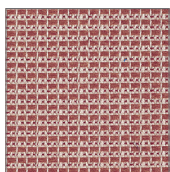
39- beige carbon B



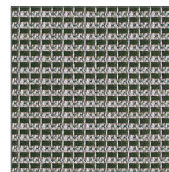
89- sack carbon D



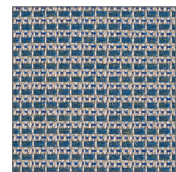
80- black sooty C



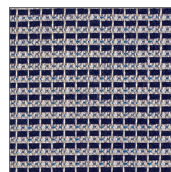
73- marconi indian red B



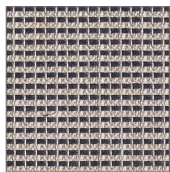
72- marconi green B



70- marconi light blue B



71- marconi marine blue B



74- marconi antracita B

---

## TABLE TOP

### Aluminum

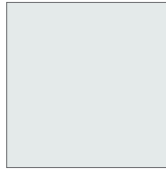
Same colors as ALUMINUM FRAME PAINTING COLORS above.

Not available for dining tables Ø120, Ø140 and 300x100.

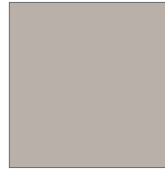
### Tempered glass

Tempered at high temperatures and lacquered for optimum resistance to the elements. The glass is acid washed to obtain a matte surface that does not stain and requires little care. Glass is scratch resistant, impervious to moisture, and therefore is almost completely stain resistant.

Only for low tables 147x92x35 and 97x92x35.



80- white



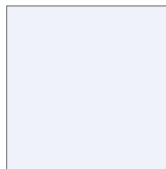
87- stone



81- chocolate

### HPL Compact top

HPL Compact is a high pressure structural laminate, built up from multiple layers of wood-based fibers impregnated with thermosetting resins and surface layers on both sides, having decorative colors or designs. Thicknesses from 10mm to 12mm it is particularly suited to use in high humidity, high impact areas. Compact is impressively strong and damage resistant and has remarkable structural stability weather and light protecting properties.



50- white



51- antracita



54- brown

### Dekton®

Dekton is made from a mixture of inorganic raw materials found in glass, porcelain tile and natural quartz. The process by which it is made combines technologies from these three industries, resulting in a proprietary new advancement called Particle Sintering Technology (PST). Some of the more prominent characteristics of Dekton are: Highly Resistant to (UV) Light, Suitable for Outdoor use, non-porous Surface, temperature Resistant, High Mechanical Resistance, color stability, low maintenance, non-combustibility, dimensional stability.



78- danae



01- strato



02- galema



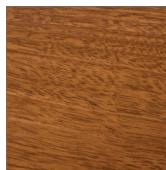
03- keranium



04- domoos

### Iroko

Iroko is an intertropical African tree that is characterized by its durable timber which does not require any preservation treatment and therefore offers economic and ecological advantages that make it an ideal material for outdoor use. Moreover, iroko has an interesting potential in carbon dioxide sequestration and soil improvement. Also is a highly durable hardwood that is both insect and rot resistant, making it the ideal type of wood for outdoor furniture products.



70- iroko