

E72351



Collection: ALEO

Finish*:



CP - Chrome

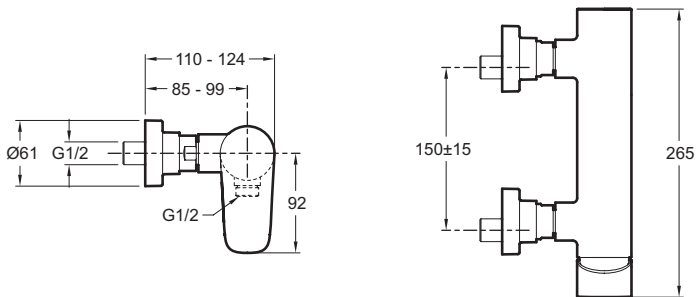
Main features:



Features

- WEIGHT: 1.9 kg
- INSTALLATION TYPE: 2 holes
- TYPE: Single-lever
- CONNECTION: With connectors and wall escutcheons
- HOLE CONFIGURATION: 150 ± 15
- NON-RETURN VALVE: Yes
- Sensitive flow control
- MATERIAL: Metal
- NORMS AND REGULATION: Standards: ACS (Certificate of Sanitary Compliance):10 ACC LY 113
- FLOW RATE: 14 l/mn
- MECHANISM: Ceramic disc cartridge
- INSTALLATION TYPE: 2 holes
- MECHANISM GUARANTEE: 5 years
- 5-year guarantee

Technical drawing



Product Specification: Wall-mount shower mixer. E72351. Collection: ALEO. WEIGHT: 1.9 kg. MATERIAL: Metal. INSTALLATION TYPE: 2 holes. NORMS AND REGULATION: Standards: ACS (Certificate of Sanitary Compliance):10 ACC LY 113. TYPE: Single-lever. FLOW RATE: 14 l/mn. CONNECTION: With connectors and wall escutcheons. MECHANISM: Ceramic disc cartridge. HOLE CONFIGURATION: 150 ± 15 . INSTALLATION TYPE: 2 holes. NON-RETURN VALVE: Yes. MECHANISM GUARANTEE: 5 years. Sensitive flow control. 5-year guarantee.