

Finishes CLUB collection
by Andrés Bluth

bivaq



ALUMINUM FRAME PAINTING COLOR

Aluminum is an environmental friendly, light and tough metal with an excellent strength to weight ratio and corrosion resistance, making it an ideal material for outdoor furniture. By powder coating we give to the aluminum an advanced method of applying protective, resistance to chemicals, corrosion, UV weathering and decorative coating. Choose your Bivaq furniture finish among all these painting colors:

Chair only available in white text 10 and antracita 23.

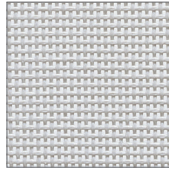


FABRIC

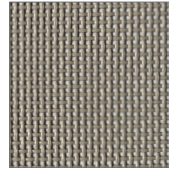
Vinytex fabrics (slings)

Vinytex is a generic term for a woven, open-mesh fabric made from a vinyl coated, high strength polyester yarn. Combines a textile appearance with the extreme weather resistant properties ensuring lasting colour with no sag effect. This fabric is hard wearing, wipeable, quick-drying and resistant to fading, mildew and wear & tear under even the most severe weather conditions.

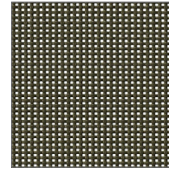
Chair only available in white 01 and antracita 03.



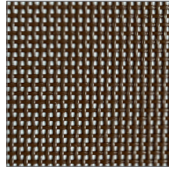
01- white



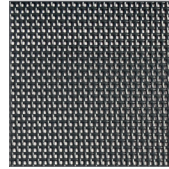
20- grey beige



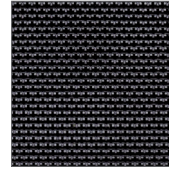
21- basque green A



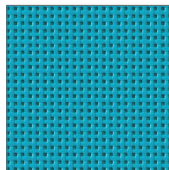
07- brown



03- antracita



22- black A



60- blue turquoise

TABLE TOP

Aluminum

Same colors as ALUMINUM FRAME PAINTING COLORS above.

HPL Compact top

HPL Compact is a high pressure structural laminate, built up from multiple layers of wood-based fibers impregnated with thermosetting resins and surface layers on both sides, having decorative colors or designs. Thicknesses from 10mm to 12mm it is particularly suited to use in high humidity, high impact areas. Compact is impressively strong and damage resistant and has remarkable structural stability weather and light protecting properties.



50- white



51- antracita



54- brown