

PICO FULL INOX

walk over

IT Istruzioni di montaggio

EN Assembly instructions

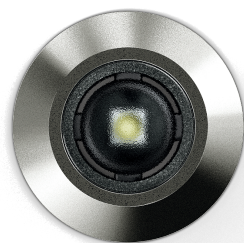
DE Montageanleitung

FR Instructions de montage

ES Instrucciones de montaje

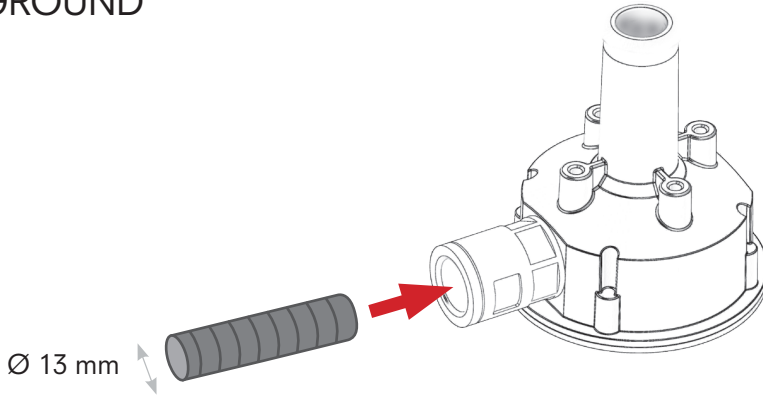


More details at:
platek.eu/PICO

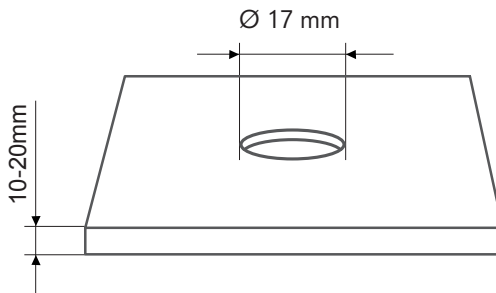


Platek®

INGROUND




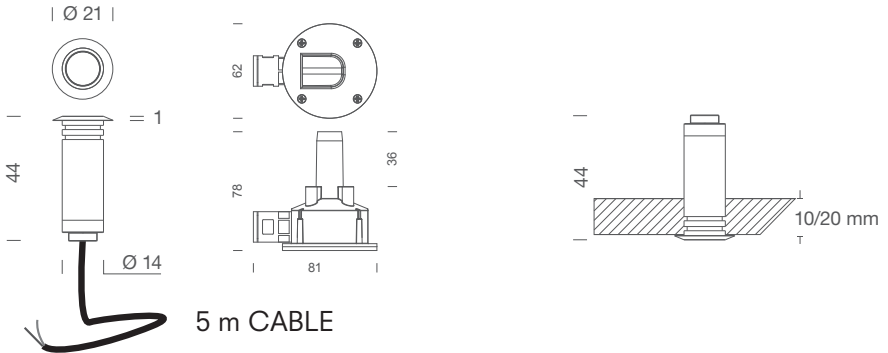
DOWNLIGHT



PICO full Inox IP65

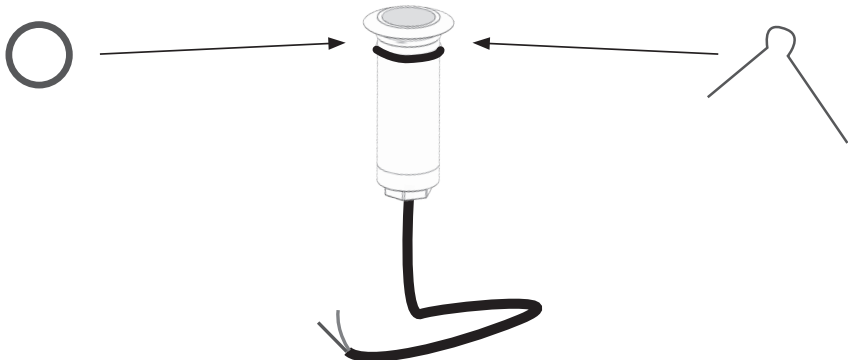
Gruppo rischio /Risk group 1 (EN 62471:2008)

Categoria Category Kategorie Catégorie Categoria	T (°C) T (°C) T (°C) T (°C) T (°C)	Classe Class Schutzklasse Classe Clase	Alimentazione Supply Versorgung Alimentation Suministro	White LED 24V DC SPOT	White LED 24V DC WIDE
1W LED	35	III 	24V DC	1,4W / 95 lm Real data	1,4W / 70 lm Real data



INGROUND

DOWNLIGHT



INSTALLATION

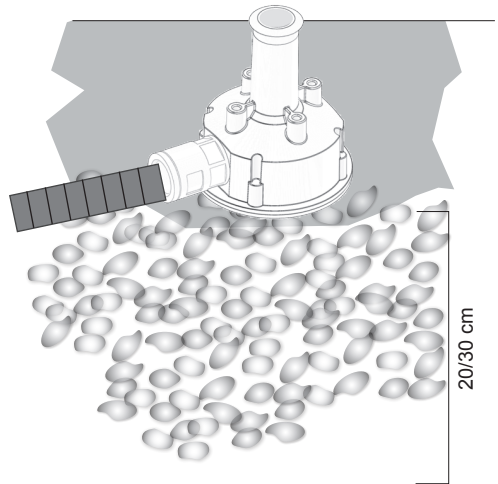
IT La corretta installazione prevede un letto di drenaggio in ghiaia di 30 cm alla base della controcassa. Per il fissaggio della controcassa al terreno, non utilizzare prodotti che ostacolano la dispersione del calore, tipo resine o espansi.

EN The correct installation foresees a gravel drainage bed of 30 cm at the base of the counter-case. To fix the counter-case to the ground, do not use products that block the dispersion of heat, such as resins or foams.

DE Für den korrekten Einbau ist zur Drainage am Fuß des Einbauehäuses ein 30 cm tiefes Kiesbett vorzusehen. Keine wärmeisolierenden Baustoffe (wie z.B. Harz oder Schaumstoff) für die Befestigung des Einbauehäuses im Boden benutzen.

FR Pour une installation correcte, prévoyez un lit de drainage en gravier de 30 cm à la base du pot d'encastrement. Pour la fixation du pot d'encastrement au terrain, ne pas utiliser de produit susceptible d'entraver la dispersion de la chaleur tels les résines ou les produits mousse.

ES Para una instalación correcta, disponer un lecho de drenaje de gravilla de 30 cm a la base de la hornacina. Para fijar la hornacina al terreno, no utilizar productos que obstaculicen la dispersión del calor como las resinas o los productos en espuma.



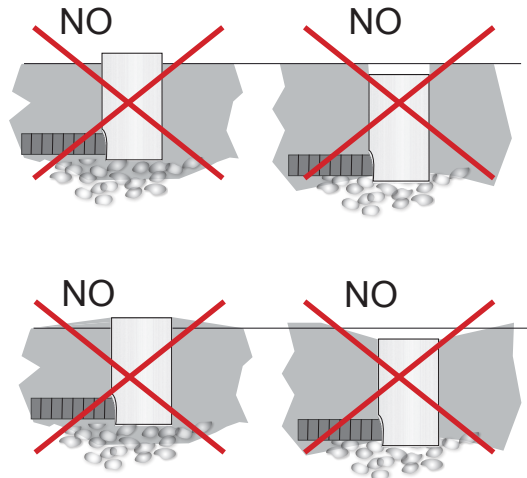
IT Posizionare la controcassa in modo da mantenere il bordo superiore dell'anello, che resterà a vista, a filo del pavimento finito.

EN Position the counter-case as to keep the upper edge of the ring, which will remain visible, flush with the finished floor.

DE Bauen Sie das Einbauehäuse so im Boden ein, dass sich der obere Rand bündig zum Boden befindet und sichtbar bleibt.

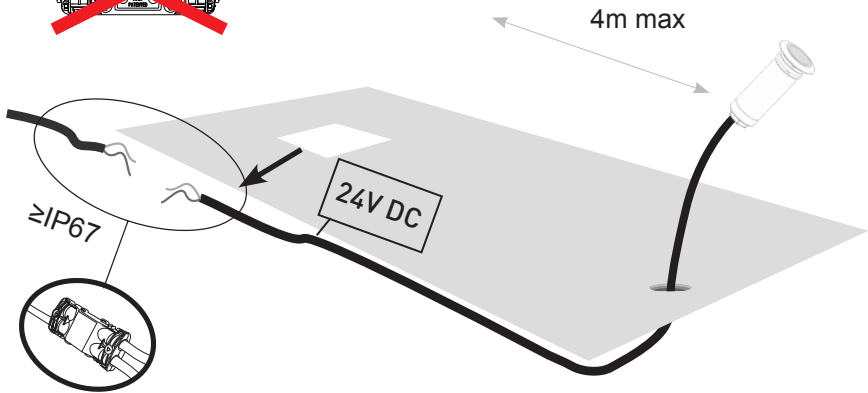
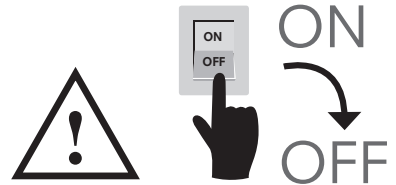
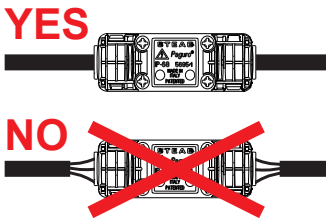
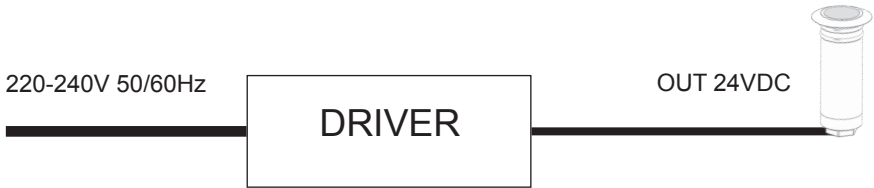
FR Placer le pot d'encastrement de façon à maintenir le bord supérieur de l'anneau rond inox, qui restera visible, au ras du sol fini.

ES Colocar la hornacina de tal forma que el borde superior del anillo, que se mantendrá a la vista, quede a ras del pavimento acabado.

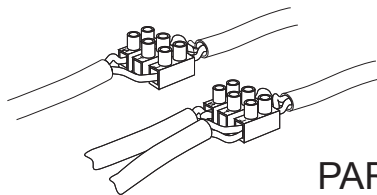


INSTALLATION

- IT Collegamento elettrico
- EN Electric connection
- DE Elektrischer Anschluss
- FR Raccordement électrique
- ES Conexión eléctrica

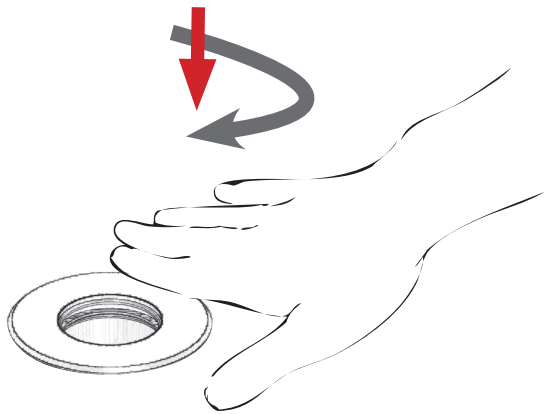
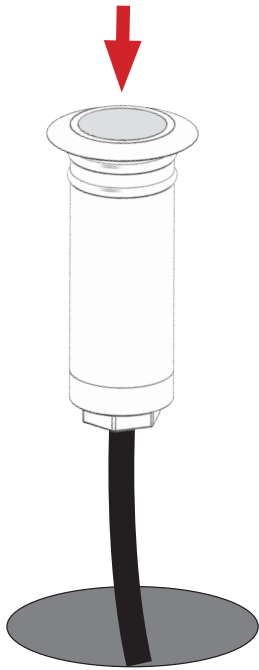


- IT Connettore non fornito
- EN Connector not supplied
- DE Kabelverbinder bauseits
- FR Connecteur non fourni
- ES Conector no suministrado

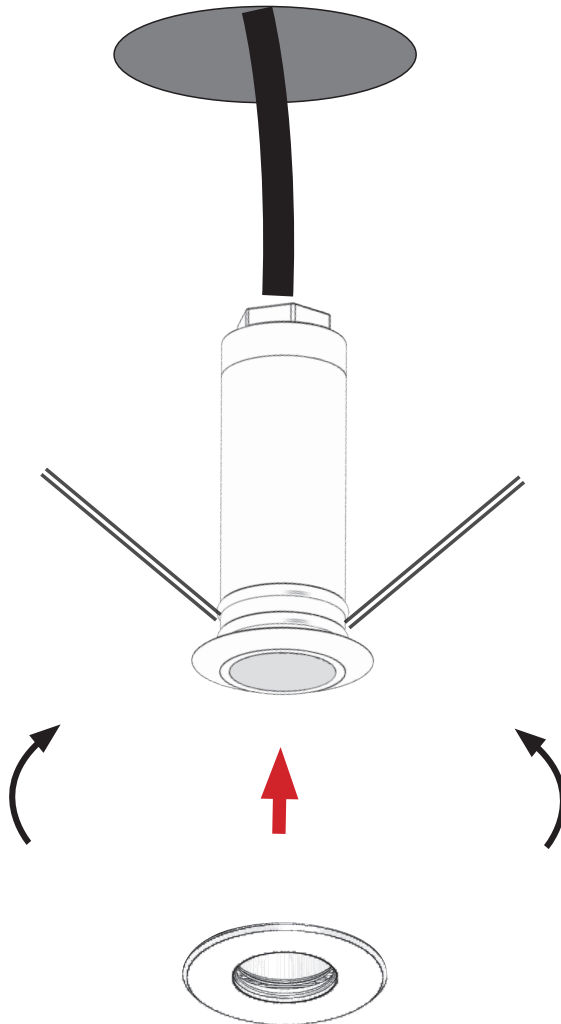


PARALLEL WIRING

INGROUND



DOWN LIGHT



IT COME POSSIAMO ESSERE D'AIUTO?

Ottieni supporto tramite telefono o E-mail, contattandoci al +39 030 68 18 201 o scrivendo all'indirizzo E-mail supporto@platek.eu

EN HOW CAN WE HELP YOU?

Get support by phone or e-mail, call us on +39 030 68 18 201 or send us an email supporto@platek.eu

DE WIE KÖNNEN WIR IHNEN HELFEN?

Sie können unseren Kundendienst per Telefon oder E-Mail erreichen. Kontaktieren Sie uns unter der Telefonnummer +39 030 68 18 201 oder schreiben Sie an folgende E-Mail-Adresse supporto@platek.eu

FR COMMENT POUVONS-NOUS VOUS AIDER?

Vous pouvez obtenir de l'aide par téléphone ou bien par email, en nous contactant +39 030 68 18 201 ou bien en nous écrivant à l'adresse email supporto@platek.eu

ES ¿PODEMOS AYUDARTE?

Solicita soporte a través de nuestro teléfono o email, contactándonos al +39 030 68 18 201 o escribiendo a nuestra dirección de correo electrónico supporto@platek.eu

PLATEK SRL
T + 39 030 6818201
E-MAIL INFO@PLATEK.EU
WWW.PLATEK.EU

REGISTERED OFFICE:
VIA PADERNO 19
25050 RODENGO SAIANO
(BS) ITALY

HEAD OFFICE:
VIA MARROCCO 4
25050 RODENGO SAIANO
(BS) ITALY



- IT** Conservare le istruzioni.
- EN** Retain the instructions.
- DE** Bewahren Sie die Anleitung.
- FR** Conservez ces instructions.
- ES** Conserve las instrucciones.