

E98714



Collection: JULY

Finish*:



CP - Chrome

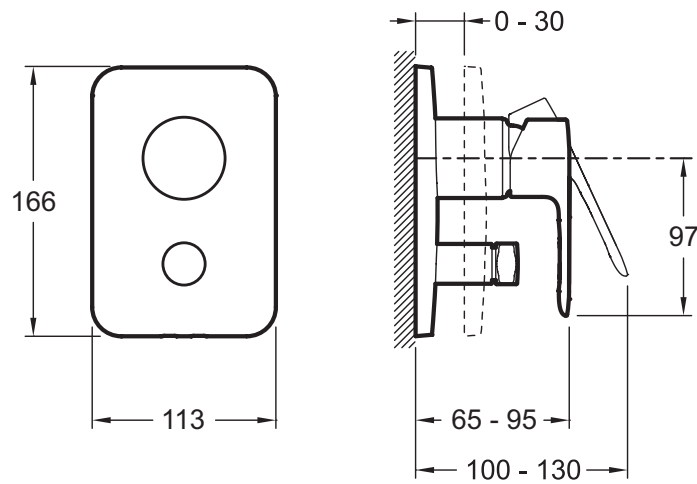
Features

- DIMENSIONS: 24.50 x 16.50 x 11.50 cm
- MATERIAL: Metal
- NORMS AND REGULATION: ACS (Certificate of Sanitary Compliance): 10 ACC LY 004
- WEIGHT: 2.6 kg
- INSTALLATION TYPE: Built-in
- Automatic diverter with locking option

Required products

- 98699D: Universal recessed box

Technical drawing



Product Specification: Two-way shower mixer. E98714. Collection: JULY. DIMENSIONS: 24.50 x 16.50 x 11.50 cm. WEIGHT: 2.6 kg. MATERIAL: Metal. INSTALLATION TYPE: Built-in. NORMS AND REGULATION: ACS (Certificate of Sanitary Compliance): 10 ACC LY 004. Automatic diverter with locking option.

**Due to possible variations in computer and printer calibrations, technical factors and certain finish characteristics, the colors you see may not accurately portray the actual colors and are provided as a guide only.*