

SPRING collection



Lundbergdesign

floodlight / on pole



micro spring floodlight

A family of floodlights available in different sizes and power, white light or dynamic one, suitable to meet any requirement in the lighting design of outdoor environments. The design is strictly technical, but with charming hints. Double colour identifying and defining the various components of the projector, creating a connection between the volumes. Form and function are identified and perfect, defined by changes of surfaces and materials.



mini spring floodlight



spring floodlight





spring on pole





mini spring floodlight

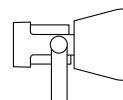




collection

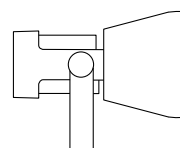
	floodlight Micro Spring	IP65 IK 06
	floodlight on pole Micro Spring	4 mm extra clear glass technical dimensions ø 80 x 145 mm



	floodlight Mini Spring	IP65 IK 06
	floodlight on pole Mini Spring	4 mm extra clear glass technical dimensions ø 147 x 235 mm



	floodlight Spring	IP65 IK 06
	floodlight on pole Spring	5 mm extra clear glass technical dimensions ø 200 x 300 mm



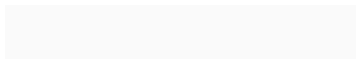





details



Die-cast body and flange made of aluminium alloy with very low copper content. A4 Stainless steel screws. Graduated vernier in AISI 304 stainless steel with double tightening for safe positioning. Gore valve to prevent condensing. The product is subjected to galvanic anodizing treatment divided into distinct phases: mechanical satin finishing, surface degreasing, anodic oxidation and finally fixing. Subsequently the product is painted by performing a double pass in-line process, which allows you to generate a single thick protective layer which then generates barrier against atmospheric agents and UV rays. This allows to achieve corrosion resistance performance in salt spray. Pre-treatment with atmospheric pressure plasma is carried out on the surface before gluing of the diffuser on Platek products.

standard finishes



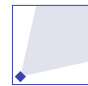
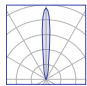
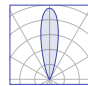
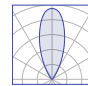
on request finishes


			
.06 grey	.01 black	.02 white	.07 corten
			
	.08 anthracite	.09 bronze	

floodlight / floodlight on pole

	Micro Spring	white LED version 0,5 m cable length
		RGBW LED version 1,5 m cable length



WHITE LED 3000K CRI>80 220-240V 0/50/60Hz ⊕ 2700K / 4000K available on request		5,9W 465 lm (*) spot		5,9W 435 lm (*) medium		5,9W 440 lm (*) large
		12° 12280 cd/klm		33° 2560 cd/klm		44° 1680 cd/klm

RGBW LED max. 500mA ⬠ 4 channels + 1 channel NTC		5,8W spot 12°		5,8W medium 33°		5,8W large 44°
---	---	---------------------	---	-----------------------	---	----------------------

(*) Real Data



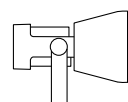
floodlight / floodlight on pole



Mini Spring

white LED version
1 m cable length

RGBW LED version
1 m cable length



WHITE COB LED 3000K CRI>80 220-240V 0/50/60Hz ⊕ 2700K / 4000K available on request		19W 1860 lm (*) spot		19W 1670 lm (*) medium		19W 1700 lm (*) large
		15° 6900 cd/klm		25° 3210 cd/klm		60° 1500 cd/klm
WHITE 9 LED 3000K CRI>80 220-240V 0/50/60Hz ⊕ 2700K / 4000K available on request		21W 2000 lm (*) spot		21W 1950 lm (*) medium		21W 1780 lm (*) large
		9° 23770 cd/klm		25° 4380 cd/klm		48° 1535 cd/klm
RGBW 16 LED max. 350mA ⬠ 4 channels + 1 channel NTC		16W spot 9°		16W medium 28°		16W large 44°

(*) Real Data

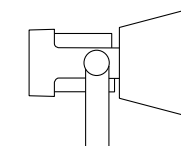
floodlight / floodlight on pole



Spring

white LED version
3 m cable length

RGBW LED version
3 m cable length



WHITE COB LED 3000K CRI>80 220-240V 0/50/60 Hz ⊕ 2700K / 4000K available on request		44W 4480 lm (*) spot		44W 4540 lm (*) medium		
		13° 6570 cd/klm		44° 1520 cd/klm		
WHITE 18 LED 3000K CRI>80 220-240V 0/50/60 Hz ⊕ 2700K / 4000K available on request		44W 4000 lm (*) spot		44W 3900 lm (*) medium		44W 3555 lm (*) large
		9° 19510 cd/klm		26° 3860 cd/klm		40° 1615 cd/klm
RGBW 24 LED max. 500mA ⬠ 4 channels + 1 channel NTC		35W spot 9°		35W medium 28°		35W large 45°

(*) Real Data