

E73091



Collection: COMPOSED

Finish*:



CP - Chrome

Main features:



Features

- WEIGHT: 3 kg
- INSTALLATION TYPE: 2 holes
- TYPE: Single-lever
- CONNECTION: With connectors and wall escutcheons
- HOLE CONFIGURATION: 150 ± 15
- INSTALLATION TYPE: 2 holes
- MECHANISM GUARANTEE: 5 years
- MATERIAL: Brass
- NORMS AND REGULATION: ACS n° 14 ACC LY 511
- FLOW RATE: 14 l/mn
- MECHANISM: Ceramic disc cartridge
- WASTE : Without waste
- NON-RETURN VALVE: Yes
- Non-return valve on shower outlet

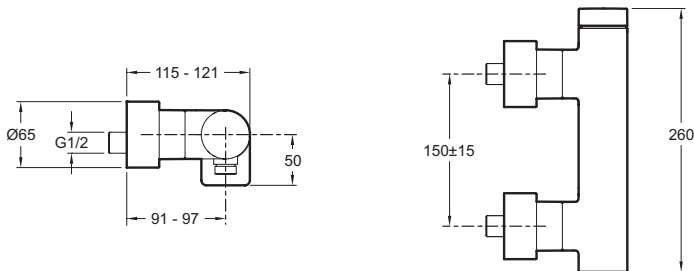
Consumer benefits

- Titanium PVD finish guaranteed 25 years

Installation benefits

- Spacer kit for renovation

Technical drawing



Product Specification: Single-lever wall shower mixer. E73091. Collection: COMPOSED. WEIGHT: 3 kg. MATERIAL: Brass. INSTALLATION TYPE: 2 holes. NORMS AND REGULATION: ACS n° 14 ACC LY 511. TYPE: Single-lever. FLOW RATE: 14 l/mn. CONNECTION: With connectors and wall escutcheons. MECHANISM: Ceramic disc cartridge. HOLE CONFIGURATION: 150 ± 15. WASTE : Without waste. INSTALLATION TYPE: 2 holes. NON-RETURN VALVE: Yes. MECHANISM GUARANTEE: 5 years. Non-return valve on shower outlet.