

Tesi 3 è la versione a tre colonne della gamma Tesi, con una profondità di 101 mm. I Termoarredatori Tesi rappresentano il sistema più funzionale, modulare ed elegante per il riscaldamento di tutti gli ambienti. Grazie alle forme arrotondate, che riducono al minimo il rischio di incidenti, possono essere inseriti anche in locali pubblici, enti, scuole ed ospedali. Tesi3 si sviluppa con altezze da 200 ai 2500 mm.



Tesi 3, 12 elementi, altezza 2000 mm, larghezza 540 mm, Deep Blue

Caratteristiche costruttive

tubi in lamiera d'acciaio di diametro 25 mm
collettori in lamiera d'acciaio stampati
larghezza elementi 45 mm (passo del singolo elemento)
filettature estremità collettore sup. e inf. 1"1/4 G dx o sx
pressione di esercizio massima ammessa 8 bar
temperatura di esercizio massima ammessa 95°C
lunghezza radiatore con tappi montati: (N° elem. x 45) + 24 mm
misura dell'interasse valvola Irsap pari a 41÷44 mm
misura dell'interasse detentore Irsap pari a 41÷44 mm

Certificazioni



Plus



Dati tecnici

Modello	Profondità (mm)	Altezza (mm)	Interasse (mm)	Peso (kg)	Capacità (lt)	$\Delta t=50^{\circ}\text{C}$ (kcal/h)	$\Delta t=50^{\circ}\text{C}$ (Watt)	$\Delta t=40^{\circ}\text{C}$ (Watt)	$\Delta t=30^{\circ}\text{C}$ (Watt)	$\Delta t=20^{\circ}\text{C}$ (Watt)	Esponente
200	101,0	200	127	0,41	0,46	17,4	20,3	15,2	10,5	6,2	1,290
300	101,0	300	235	0,60	0,60	28,0	32,5	24,6	17,2	10,4	1,250
400	101,0	400	335	0,78	0,72	36,1	42,0	31,7	22,1	13,3	1,260
500	101,0	500	435	0,96	0,85	44,2	51,4	38,7	26,9	16,0	1,270
565	101,0	565	500	1,07	0,93	49,3	57,4	43,1	29,9	17,8	1,280
595	101,0	595	530	1,10	1,00	51,8	60,2	45,2	31,3	18,6	1,280
600	101,0	600	535	1,14	0,97	52,1	60,6	45,5	31,5	18,7	1,280
635	101,0	635	570	1,20	1,02	54,9	63,8	47,9	33,1	19,6	1,280
665	101,0	665	600	1,25	1,05	57,2	66,5	49,9	34,5	20,4	1,290
685	101,0	685	620	1,29	1,08	58,8	68,3	51,2	35,4	20,9	1,290
750	101,0	750	685	1,40	1,16	64,0	74,4	55,7	38,3	22,6	1,300
765	101,0	765	700	1,43	1,18	65,0	75,6	56,6	38,9	23,0	1,300
795	101,0	795	730	1,50	1,20	67,4	78,4	58,6	40,3	23,8	1,300
865	101,0	865	800	1,61	1,30	72,8	84,6	63,2	43,4	25,5	1,310
885	101,0	885	820	1,64	1,33	74,3	86,4	64,5	44,2	26,0	1,310
900	101,0	900	835	1,67	1,35	75,5	87,8	65,5	44,9	26,3	1,310
935	101,0	935	870	1,73	1,39	78,2	91,0	67,8	46,5	27,3	1,310
1000	101,0	1000	935	1,85	1,47	83,2	96,8	72,2	49,4	29,0	1,320
1200	101,0	1200	1135	2,37	1,70	98,7	114,8	85,5	58,4	34,2	1,320
1500	101,0	1500	1435	2,95	2,07	121,9	141,7	105,3	71,8	41,9	1,330
1665	101,0	1665	1600	3,28	2,27	134,7	156,7	116,4	79,4	46,3	1,330
1800	101,0	1800	1735	3,54	2,43	145,3	168,9	125,7	85,8	50,2	1,330
1865	101,0	1865	1800	3,66	2,51	150,4	174,8	130,2	89,0	52,0	1,320
2000	101,0	2000	1935	3,93	2,68	161,0	187,2	139,5	95,5	56,0	1,318

2065	101,0	2065	2000	4,05	2,76	166,1	193,2	144,1	98,7	57,9	1,315
2200	101,0	2200	2135	4,32	2,92	176,9	205,7	153,5	105,3	61,9	1,310
2500	101,0	2500	2435	4,90	3,29	201,0	233,7	174,9	120,4	71,1	1,299

Grazie alle elevate prestazioni dei radiatori Tesi3, il Δt ideale per la progettazione a bassa temperatura è 30°C

Per Δt diversi da 50°C utilizzare la formula: $Q=Q_n (\Delta t / 50)^n$

A partire dalle vendite dell'anno 2010, tutta la gamma dei radiatori TESI è garantita 10 anni.

Rese a batteria

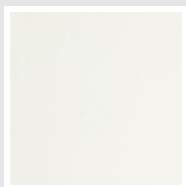
Lunghezza (mm)	N° Elementi	200	300	400	500	565	595	600	635	665	685	750	765	795	865	885	900	935	1000	1200	1500	1665	1800	1865	2000	2065	
90	2	<i>Watt</i>																									
		=																									
		W	41	65	84	103	115	120	121	128	133	137	149	151	157	169	173	176	182	194	230	283	313	338	350	374	386
135	3	<i>Watt</i>																									
		=																									
		W	61	98	126	154	172	181	182	191	200	205	223	227	235	254	259	263	273	290	344	425	470	507	525	562	580
180	4	<i>Watt</i>																									
		=																									
		W	81	130	168	205	229	241	242	255	266	273	297	302	314	339	346	351	364	387	459	567	627	676	699	749	773
225	5	<i>Watt</i>																									
		=																									
		W	101	163	210	257	287	301	303	319	333	342	372	378	392	423	432	439	455	484	574	709	783	845	874	936	966
270	6	<i>Watt</i>																									
		=																									
		W	122	195	252	308	344	361	363	383	399	410	446	454	470	508	519	527	546	581	689	850	940	1014	1049	1123	1155
315	7	<i>Watt</i>																									
		=																									
		W	142	228	294	360	402	421	424	446	466	478	521	529	549	592	605	615	637	678	803	992	1097	1182	1224	1310	1352
360	8	<i>Watt</i>																									
		=																									
		W	162	260	336	411	459	482	485	510	532	547	595	605	627	677	692	702	728	774	918	1134	1253	1351	1399	1498	1548
405	9	<i>Watt</i>																									
		=																									
		W	183	293	378	462	516	542	545	574	599	615	669	680	706	762	778	790	819	871	1033	1276	1410	1520	1574	1685	1733
450	10	<i>Watt</i>																									
		=																									
		W	203	325	420	514	574	602	606	638	665	683	744	756	784	846	864	878	910	968	1148	1417	1567	1689	1748	1872	1932
495	11	<i>Watt</i>																									
		=																									
		W	223	358	462	565	631	662	666	702	732	752	818	832	862	931	951	966	1000	1065	1262	1559	1723	1858	1923	2059	2123
540	12	<i>Watt</i>																									
		=																									
		W	243	390	504	616	688	722	727	765	798	820	892	907	941	1016	1037	1054	1091	1161	1377	1701	1880	2027	2098	2247	2318
585	13	<i>Watt</i>																									
		=																									
		W	264	423	546	668	746	783	788	829	865	888	967	983	1019	1100	1124	1141	1182	1258	1492	1843	2037	2196	2273	2434	2511
630	14	<i>Watt</i>																									
		=																									
		W	284	455	588	719	803	843	848	893	931	957	1041	1058	1098	1185	1210	1229	1273	1355	1607	1984	2193	2365	2448	2621	2705

Lunghezza (mm)	N° Elementi	200	300	400	500	565	595	600	635	665	685	750	765	795	865	885	900	935	1000	1200	1500	1665	1800	1865	2000	2065
675	15	Watt = W 304 488 630 771 861 903 909 957 998 1025 1116 1134 1176 1270 1297 1317 1364 1452 1721 2126 2350 2534 2623 2808 2899 =																								
720	16	Watt = W 325 520 672 822 918 963 969 1020 1064 1093 1190 1210 1254 1354 1383 1405 1455 1549 1836 2268 2507 2703 2798 2995 =																								
765	17	Watt = W 345 553 715 873 975 1023 1030 1084 1131 1162 1264 1285 1333 1439 1469 1493 1546 1645 1951 2410 2663 2872 2972 3183 =																								
810	18	Watt = W 365 585 757 925 1033 1084 1090 1148 1197 1230 1339 1361 1411 1524 1556 1580 1637 1742 2066 2551 2820 3041 3147 3370 =																								
855	19	Watt = W 386 618 799 976 1090 1144 1151 1212 1264 1298 1413 1436 1490 1608 1642 1668 1728 1839 2180 2693 2977 3209 3322 3557 =																								
900	20	Watt = W 406 650 841 1027 1147 1204 1212 1276 1330 1367 1487 1512 1568 1693 1729 1756 1819 1936 2295 2835 3133 3378 3497 3744 =																								
945	21	Watt = W 426 683 883 1079 1205 1264 1272 1339 1397 1435 1562 1588 1646 1777 1815 1844 1910 2033 2410 2977 3290 3547 3672 3931 =																								
990	22	Watt = W 446 715 925 1130 1262 1324 1333 1403 1463 1503 1636 1663 1725 1862 1902 1932 2001 2129 2525 3118 3447 3716 3847 4119 =																								
1035	23	Watt = W 467 748 967 1182 1320 1385 1393 1467 1530 1572 1711 1739 1803 1947 1988 2019 2092 2226 2639 =																								
1080	24	Watt = W 487 780 1009 1233 1377 1445 1454 1531 1596 1640 1785 1814 1882 2031 2075 2107 2183 2323 2754 =																								
1125	25	Watt = W 507 813 1051 1284 1434 1505 1514 1594 1663 1708 1859 1890 1960 2116 2161 2195 2274 2420 2869 =																								
1170	26	Watt = W 528 845 1093 1336 1492 1565 1575 1658 1730 1777 1934 1966 2038 2201 2247 2283 2365 2517 =																								
1215	27	Watt = W 548 878 1135 1387 1549 1625 1636 1722 1796 1845 2008 2041 2117 2285 2334 2371 2456 2613 =																								

Lunghezza (mm)	N° Elementi	200	300	400	500	565	595	600	635	665	685	750	765	795	865	885	900	935	1000	1200	1500	1665	1800	1865	2000	2065	
1260	28	Watt = W 568 910 1177 1438 1606 1686 1696 1786 1863 1914 2082 2117 2195 2370 2420 2458 2547 2710 =																									
1305	29	Watt = W 588 943 1219 1490 1664 1746 1757 1850 1929 1982 2157 2192 2274 2455 2507 2546 2638 2807 =																									
1350	30	Watt = W 609 975 1261 1541 1721 1806 1817 1913 1996 2050 2231 2268 2352 2539 2593 2634 2728 2904 =																									
1395	31	Watt = W 629 1008 1303 1592 1778 1866 1878 1977 2062 2119 2305 2344 2430 2624 2680 2722 2819 3000 =																									
1440	32	Watt = W 649 1040 1345 1644 1836 1926 1939 2041 2129 2187 2380 2419 2509 2708 2766 2810 2910 3097 =																									
1485	33	Watt = W 670 1073 1387 1695 1893 1987 1999 2105 2195 2255 2454 2495 2587 2793 2853 2897 3001 3194 =																									
1530	34	Watt = W 690 1105 1429 1747 1951 2047 2060 2169 2262 2324 2529 2570 2666 2878 2939 2985 3092 3291 =																									
1575	35	Watt = W 710 1138 1471 1798 2008 2107 2120 2232 2328 2392 2603 2646 2744 2962 3025 3073 3183 3388 =																									
1620	36	Watt = W 730 1170 1513 1849 2065 2167 2181 2296 2395 2460 2677 2722 2822 3047 3112 3161 3274 3484 =																									
1665	37	Watt = W 751 1203 1555 1901 2123 2227 2241 2360 2461 2529 2752 2797 2901 3132 3198 3249 3365 3581 =																									
1710	38	Watt = W 771 1235 1597 1952 2180 2288 2302 2424 2528 2597 2826 2873 2979 3216 3285 3336 3456 3678 =																									
1755	39	Watt = W 791 1268 1639 2003 2237 2348 2363 2487 2594 2665 2900 2948 3058 3301 3371 3424 3547 3775 =																									
1800	40	Watt = W 812 1300 1681 2055 2295 2408 2423 2551 2661 2734 2975 3024 3136 3386 3458 3512 3638 3872 =																									

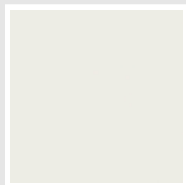
Colori e finiture

STANDARD



Bianco Standard
Cod. 01

CLASSIC



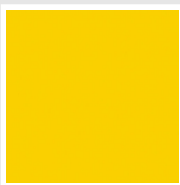
Bianco Edelweiss
Cod. 34



Avorio - RAL 1013
Cod. 02



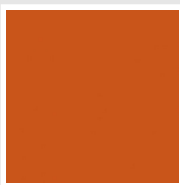
Beige Cream
Cod. 26



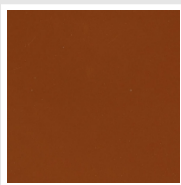
Giallo - RAL 1021
Cod. 04



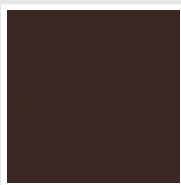
**Giallo Melone -
RAL 1028**
Cod. E7



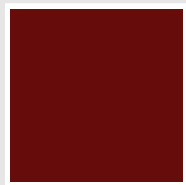
Arancio - RAL 2004
Cod. 17



**Marrone Ruggine -
RAL 8004**
Cod. E1



Marrone - RAL 8017
Cod. 09



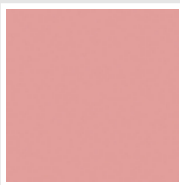
**Amaranto - RAL
3003**
Cod. 06



Rosso - RAL 3000
Cod. 05



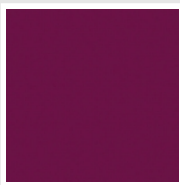
**Rosso Fragola -
RAL 3018**
Cod. Y3



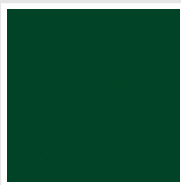
Rosa - RAL 3015
Cod. R2



**Lilla Bluastro - RAL
4005**
Cod. R3



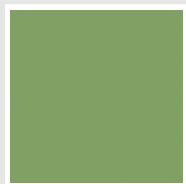
**Porpora Traffico -
RAL 4006**
Cod. R6



**Verde Bosco - RAL
6005**
Cod. 19



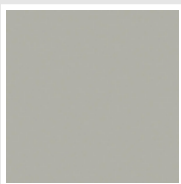
**Verde Erba - RAL
6018**
Cod. N3



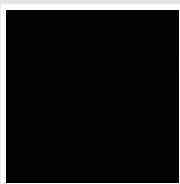
**Verde Salvia - RAL
6021**
Cod. E6



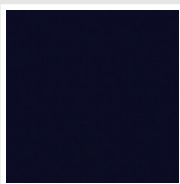
**Blu Pastello - RAL
5024**
Cod. G7



Grigio Manhattan
Cod. 03

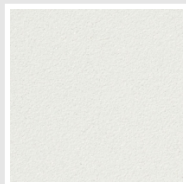


Nero - RAL 9005
Cod. 10



Deep Blue
Cod. 2F

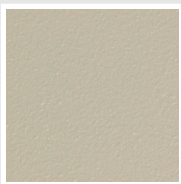
SPECIAL



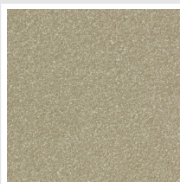
Bianco Perla
Cod. 16



Quartz 1
Cod. 1C



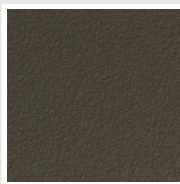
Sablé
Cod. Y4



Quartz 2
Cod. 2C



Sunstone
Cod. 2D



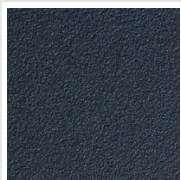
Bruno Tabacco
Cod. 1B



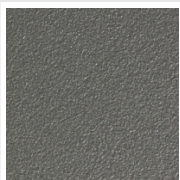
Flame Red
Cod. 7D



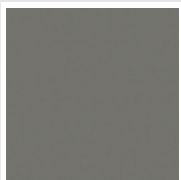
Purple Blue
Cod. 1D



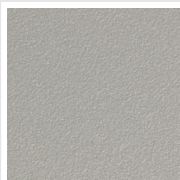
Azurite 3
Cod. 6C



Grigio Medio
Cod. 4D



**Grigio Titanio
Metallizzato - RAL
9023**
Cod. L3



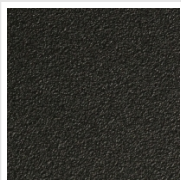
Grigio Perla
Cod. L6



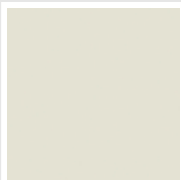
Nero Grafite
Cod. 18



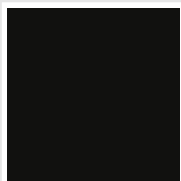
Grigio Quarzo
Cod. 31



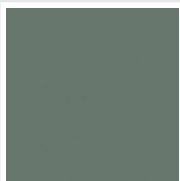
Nero Satinato
Cod. 30



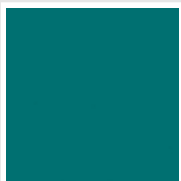
Bianco Opaco
Cod. J8



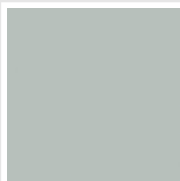
Nero Opaco
Cod. K1



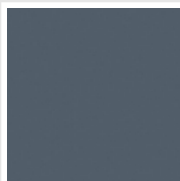
Agave
Cod. 9N



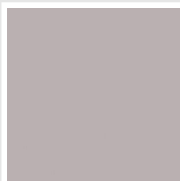
Blu Baltico
Cod. 1P



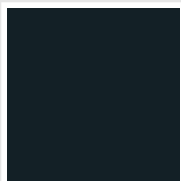
Ghiaccio
Cod. 3P



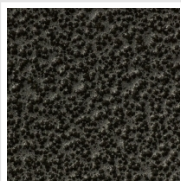
**Blu Colomba
Opaco - RAL 5014**
Cod. 4P



**Grigio Chiaro
Opaco**
Cod. 8N



**Grigio Cenere - Ral
7021**
Cod. G1

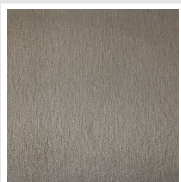


Grigio Martellato
Cod. 32



Rame Martellato
Cod. J4

FINISHES



Trattamento Loft
Cod. TR

RAL



Altri colori RAL (previa fattibilità)
Cod. ALTRIRAL

I colori rappresentati in questa cartella non sono da considerarsi impegnativi. I diversi processi tecnologici di verniciatura ed i materiali utilizzati per la realizzazione possono non avere una perfetta corrispondenza cromatica con il prodotto consegnato. L'azienda Irsap si riserva la facoltà di apportare in qualsiasi momento tutte le modifiche necessarie per il miglioramento del prodotto.