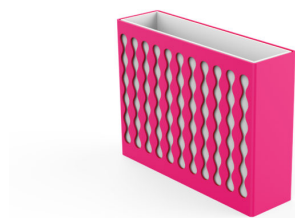


# PLANTERS: MULTIPLICITY SLIM



| Categories: [PLANTERS](#), [URBAN DESIGN](#)

## PRODUCT DESCRIPTION

Designer: [Karim Rashid](#)

The planter is made of 2 elements made in steel sheet, each one placed inside the other. Both the outer decorative part and the inner tray are the result of steel sheets of 40/10 thickness with a bottom of 20/10 thickness. On the bottom of the planter there is a drain pipe of 40 mm height, resulting from a tube 15X15x1,5mm.

For the realization of this product made in Italy, Steel EN10111DD11 is used and later treated with a cycle of sandblasting, cataphoresis and powder coating. Such cycle is meant to guarantee the protection of the painted products, in an environment of C4 corrosion class, as requested by the UNI regulations EN ISO 12944-2. The products are eventually polyester-powder coated with RAL colours at choice.

### Max Dimensions:

Height: **512,5 mm**

Width: **191 mm**

Length: **685 mm**

Capacity: **50 lt**

Weight: **49 kg**

Material: [steel](#)



## GALLERY IMAGES

