





36 425 970

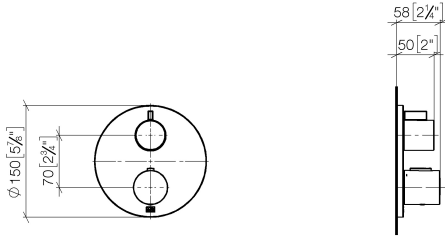


- cover plate Ø 150 mm
- temperature control handle with safety limit stop at 38°C
- hot water temperature limiter, can be preset
- WRAS 1906098

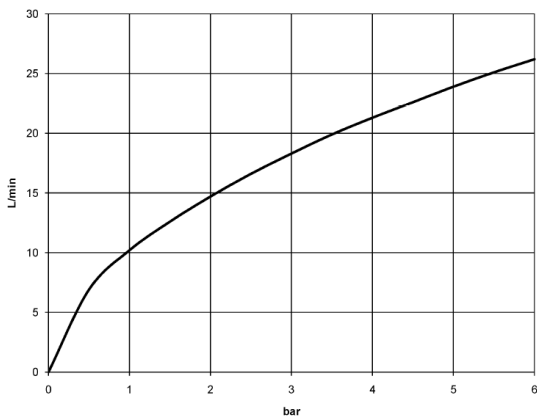
	Brushed Chrome	36 425 970-93
	Chrome	36 425 970-00
	Brushed Platinum	36 425 970-06
	Platinum	36 425 970-08
	Dark Chrome	36 425 970-19
	Light Gold	36 425 970-26
	Brushed Light Gold	36 425 970-27
	Brushed Durabronze (23kt Gold)	36 425 970-28
	Matte Black	36 425 970-33
	Brushed Bronze	36 425 970-42
	Brushed Champagne (22kt Gold)	36 425 970-46
	Champagne (22kt Gold)	36 425 970-47
	Brushed Dark Platinum	36 425 970-99

36 425 970

mm [inches]



Flow rate chart



Codes & Standards

DIN 4109

EN 1111

ISO 3822

Scottish Water  
Byelaws

UK Water Supply  
Regulations

Ü-Zeichen

VA-Zeichen



Concealed thermostat with one function volume control - Brushed Chrome

META

36 425 970

Certificates

WRAS\_1906

LGA\_19

DVGW\_DW-  
6512DN0

LGA\_19

ETA\_20

36 425 970

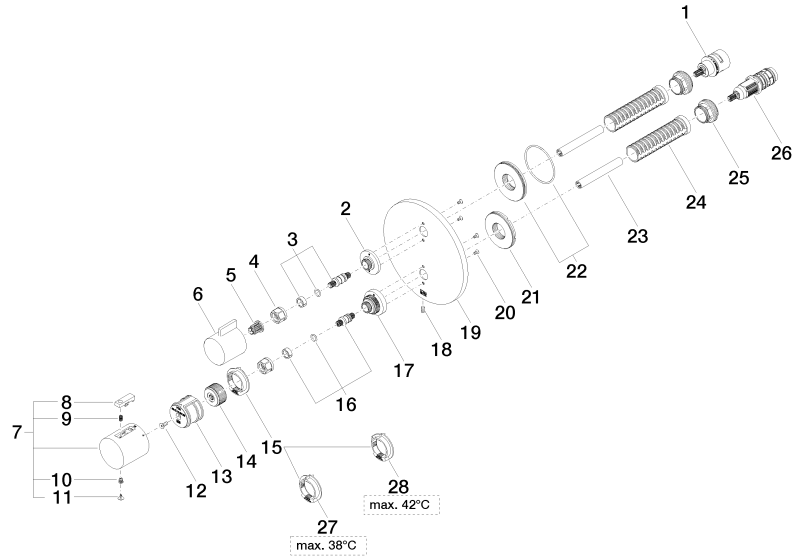
Product version up to 8/24/2020

Product version from 8/24/2020 to 2/1/2021

Product version from 2/1/2021 to 6/30/2022

**Product version from 6/30/2022**

Parts for other finishes can be found here: [Chrome](#)





## Concealed thermostat with one function volume control - Brushed Chrome

META

36 425 970

### Spare parts list

Product version up to 8/24/2020

Product version from 8/24/2020 to 2/1/2021

Product version from 2/1/2021 to 6/30/2022

### **Product version from 6/30/2022**

No.	Item Number	Name	Quantity used	Delivery time
	90 90 03 166 00 90	top	35	2