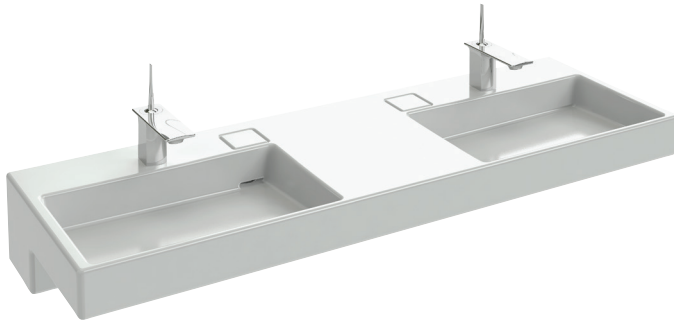


**EXA9112**



**Collection:** TERRACE

**Finish\*:**



00 - White

**Main features:**



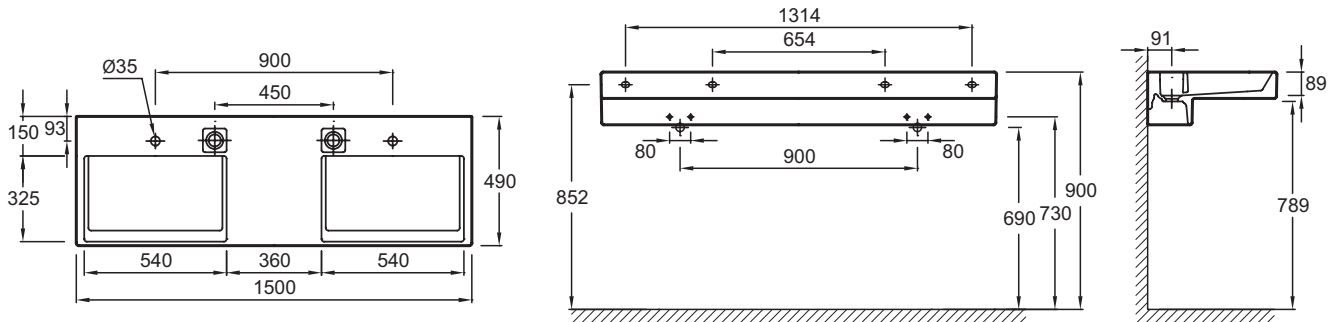
**Features**

- **DIMENSIONS:** 150 x 49 cm
- **MATERIAL:** Ceramic
- **FAUCET DRILLING:** 2 left and right tap holes
- **INSTALLATION:** STANDARD
- **NUMBER OF VANITY BASINS FOR VANITY TOPS:** Double basin vanity top
- **SUPPLIED WITH:** LED edge lighting
- **WEIGHT:** 49.5 kg
- **INSTALLATION TYPE:** Self-supporting or can be mounted on a specific cabinet
- **TAP DRILLING:** 2 tap holes
- **OVERFLOW:** With overflow hole
- **PRODUCT INCLUDED:** (Tap and fixing kit not included)
- **TECHNOLOGY:** FreeDrain system

**Consumer benefits**

- **UNIQUE DESIGN:** Esthetic, elegant, precise geometrics for a contemporary design with L-shaped architecture
- **TECHNOLOGICAL INNOVATION:** FreeDrain is a patented offset waste system that lets the user control drainage with a simple touch to the plate
- **CLEVER:** Vanity top with integral lighting
- **EASY CARE:** With no center waste, there is room for an easy-to-clean wide rear ledge on the vanity top

**Technical drawing**



Product Specification: Double vanity top 150 cm with LED strip. EXA9112. Collection: TERRACE. DIMENSIONS: 150 x 49 cm. WEIGHT: 49.5 kg. MATERIAL: Ceramic. INSTALLATION TYPE: Self-supporting or can be mounted on a specific cabinet. FAUCET DRILLING: 2 left and right tap holes. TAP DRILLING: 2 tap holes. INSTALLATION: STANDARD. OVERFLOW: With overflow hole. NUMBER OF VANITY BASINS FOR VANITY TOPS: Double basin vanity top. PRODUCT INCLUDED: (Tap and fixing kit not included). SUPPLIED WITH: LED edge lighting. TECHNOLOGY: FreeDrain system.

\*Due to possible variations in computer and printer calibrations, technical factors and certain finish characteristics, the colors you see may not accurately portray the actual colors and are provided as a guide only.