

La linea di Kart è sinonimo di funzionalità e solidità. Grazie alle sue elevate prestazioni è un radiatore adatto a stanze da bagno di grandi dimensioni. Gli ampi spazi tra i tubi scaldanti consentono un perfetto utilizzo come scaldasalviette. Kart è disponibile in 4 altezze e 3 larghezze, anche nella versione con attacchi 50mm. Con l'inserimento della resistenza elettrica (optional) può funzionare anche nei periodi in cui l'impianto è spento.



Kart, altezza 1757 mm, larghezza 500 mm, Flame Red

Caratteristiche costruttive

radiatore scaldasalviette in acciaio con elementi orizzontali a tubi tondi di diametro 23 mm, saldato a proiezione su collettore da 30 mm
filettature estremità collettore, primo tubo inferiore 1/2" Gas destra
pressione di esercizio massima ammessa 8 bar
temperatura di esercizio massima ammessa 95°C

Dotazione di serie

3 attacchi infratubo per fissaggio a muro per Kart bianco o 1 attacco chela per collettore e 1 distanziere per Kart colorato
valvola sfiato da 1/2"

Certificazioni



Plus



Dati tecnici

Modello	Profondità (mm)	Altezza (mm)	Larghezza (mm)	Interasse (mm)	Peso (kg)	Capacità (lt)	$\Delta t=50^{\circ}\text{C}$ (kcal/h)	$\Delta t=50^{\circ}\text{C}$ (Watt)	$\Delta t=40^{\circ}\text{C}$ (Watt)	$\Delta t=30^{\circ}\text{C}$ (Watt)	$\Delta t=20^{\circ}\text{C}$ (Watt)	Esponente	Funz. misto (Watt)
01													
720 13 tubi 2 intervalli	50,0	725	500	460	5,80	3,00	306,0	356,0	273,0	194,0	120,0	1,184	400
720 13 tubi 2 intervalli	50,0	725	600	560	6,70	3,40	360,0	419,0	322,0	230,0	143,0	1,177	400
720 13 tubi 2 intervalli	50,0	725	750	710	8,10	4,00	442,0	514,0	396,0	283,0	177,0	1,165	400
1110 20 tubi 3 intervalli	50,0	1112	500	460	8,90	4,60	458,0	533,0	407,0	288,0	177,0	1,203	400
1110 20 tubi 3 intervalli	50,0	1112	600	560	10,30	5,20	538,0	625,0	479,0	340,0	210,0	1,190	700
1110 20 tubi 3 intervalli	50,0	1112	750	710	12,40	6,20	656,0	763,0	588,0	420,0	261,0	1,169	700
1450 26 tubi 4 intervalli	50,0	1456	500	460	11,60	6,00	599,0	696,0	531,0	374,0	228,0	1,216	700
1450 26 tubi 4 intervalli	50,0	1456	600	560	13,40	6,80	698,0	812,0	621,0	439,0	270,0	1,203	700
1450 26 tubi 4 intervalli	50,0	1456	750	710	16,10	8,10	848,0	986,0	757,0	539,0	334,0	1,182	1000
1750 31 tubi 5 intervalli	50,0	1757	500	460	13,80	7,20	727,0	845,0	644,0	454,0	277,0	1,215	1000
1750 31 tubi 5 intervalli	50,0	1757	600	560	16,00	8,20	843,0	980,0	749,0	530,0	325,0	1,204	1000
1750 31 tubi 5 intervalli	50,0	1757	750	710	19,20	9,70	1.017,0	1.182,0	907,0	645,0	398,0	1,187	1000
05													
720 13 tubi 2 intervalli	50,0	725	500	50	5,80	3,00	306,0	356,0	273,0	194,0	120,0	1,184	400
720 13 tubi 2 intervalli	50,0	725	600	50	6,70	3,40	360,0	419,0	322,0	230,0	143,0	1,177	400
720 13 tubi 2 intervalli	50,0	725	750	50	8,10	4,00	442,0	514,0	396,0	283,0	177,0	1,165	400

1110 20 tubi 3 intervalli	50,0	1112	500	50	8,90	4,60	458,0	533,0	407,0	288,0	177,0	1,203	400
1110 20 tubi 3 intervalli	50,0	1112	600	50	10,30	5,20	538,0	625,0	479,0	340,0	210,0	1,190	700
1110 20 tubi 3 intervalli	50,0	1112	750	50	12,40	6,20	656,0	763,0	588,0	420,0	261,0	1,169	700
1450 26 tubi 4 intervalli	50,0	1456	500	50	11,60	6,00	599,0	696,0	531,0	374,0	228,0	1,216	700
1450 26 tubi 4 intervalli	50,0	1456	600	50	13,40	6,80	698,0	812,0	621,0	439,0	270,0	1,203	700
1450 26 tubi 4 intervalli	50,0	1456	750	50	16,10	8,10	848,0	986,0	757,0	539,0	334,0	1,182	1000
1750 31 tubi 5 intervalli	50,0	1757	500	50	13,80	7,20	727,0	845,0	644,0	454,0	277,0	1,215	1000
1750 31 tubi 5 intervalli	50,0	1757	600	50	16,00	8,20	843,0	980,0	749,0	530,0	325,0	1,204	1000
1750 31 tubi 5 intervalli	50,0	1757	750	50	19,20	9,70	1.017,0	1.182,0	907,0	645,0	398,0	1,187	1000

(*) Grazie alle elevate prestazioni dei radiatori Kart, il Δt ideale per la progettazione a bassa temperatura è 30°C

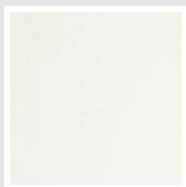
Per Δt diversi da 50°C utilizzare la formula: $Q=Q_n (\Delta t / 50)^n$

Dotazione di serie

- 3 attacchi infratubo per fissaggio a muro per Kart bianco o 1 attacco chela per collettore e 1 distanziere per Kart colorato • valvola sfiato da 1/2"

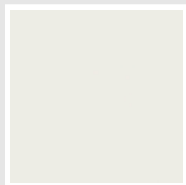
Colori e finiture

STANDARD



Bianco Standard
Cod. 01

CLASSIC



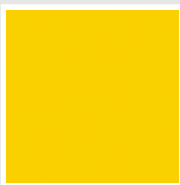
Bianco Edelweiss
Cod. 34



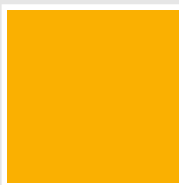
Avorio - RAL 1013
Cod. 02



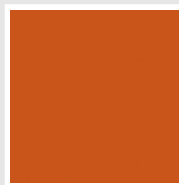
Beige Cream
Cod. 26



Giallo - RAL 1021
Cod. 04



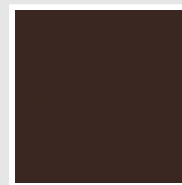
**Giallo Melone -
RAL 1028**
Cod. E7



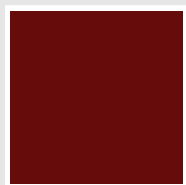
Arancio - RAL 2004
Cod. 17



**Marrone Ruggine -
RAL 8004**
Cod. E1



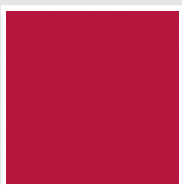
Marrone - RAL 8017
Cod. 09



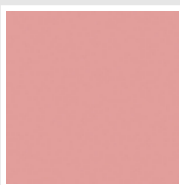
**Amaranto - RAL
3003**
Cod. 06



Rosso - RAL 3000
Cod. 05



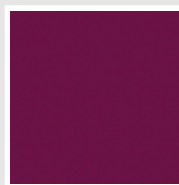
**Rosso Fragola -
RAL 3018**
Cod. Y3



Rosa - RAL 3015
Cod. R2



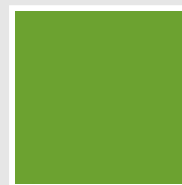
**Lilla Bluastro - RAL
4005**
Cod. R3



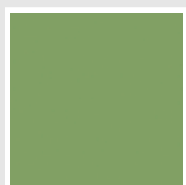
**Porpora Traffico -
RAL 4006**
Cod. R6



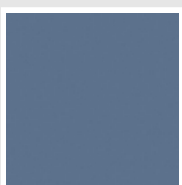
**Verde Bosco - RAL
6005**
Cod. 19



**Verde Erba - RAL
6018**
Cod. N3



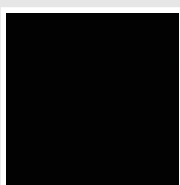
**Verde Salvia - RAL
6021**
Cod. E6



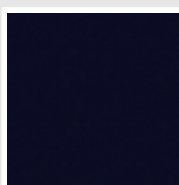
**Blu Pastello - RAL
5024**
Cod. G7



Grigio Manhattan
Cod. 03

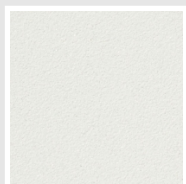


Nero - RAL 9005
Cod. 10

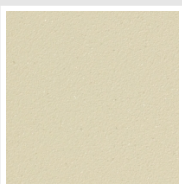


Deep Blue
Cod. 2F

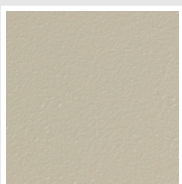
SPECIAL



Bianco Perla
Cod. 16



Quartz 1
Cod. 1C



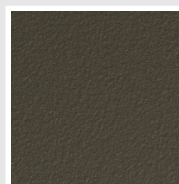
Sablé
Cod. Y4



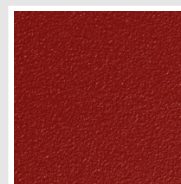
Quartz 2
Cod. 2C



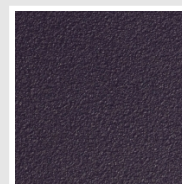
Sunstone
Cod. 2D



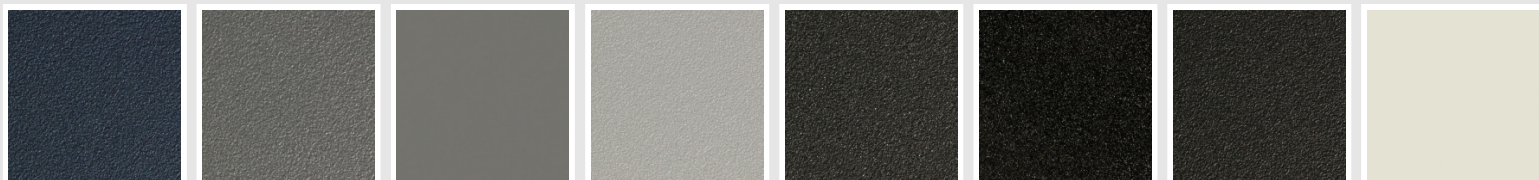
Bruno Tabacco
Cod. 1B



Flame Red
Cod. 7D



Purple Blue
Cod. 1D



Azurite 3
Cod. 6C

Grigio Medio
Cod. 4D

**Grigio Titanio
Metallizzato - RAL
9023**
Cod. L3

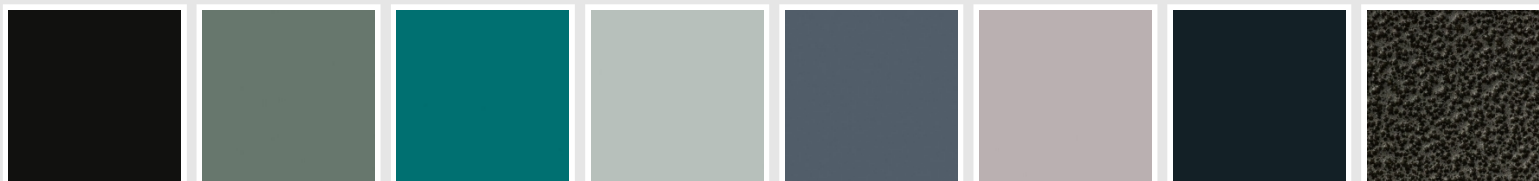
Grigio Perla
Cod. L6

Nero Grafite
Cod. 18

Grigio Quarzo
Cod. 31

Nero Satinato
Cod. 30

Bianco Opaco
Cod. J8



Nero Opaco
Cod. K1

Agave
Cod. 9N

Blu Baltico
Cod. 1P

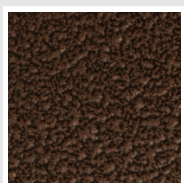
Ghiaccio
Cod. 3P

**Blu Colomba
Opaco - RAL 5014**
Cod. 4P

**Grigio Chiaro
Opaco**
Cod. 8N

**Grigio Cenere - Ral
7021**
Cod. G1

Grigio Martellato
Cod. 32



Rame Martellato
Cod. J4

RAL



Altri colori RAL (previa fattibilità)
Cod. ALTRIRAL

I colori rappresentati in questa cartella non sono da considerarsi impegnativi. I diversi processi tecnologici di verniciatura ed i materiali utilizzati per la realizzazione possono non avere una perfetta corrispondenza cromatica con il prodotto consegnato. L'azienda Irsap si riserva la facoltà di apportare in qualsiasi momento tutte le modifiche necessarie per il miglioramento del prodotto.