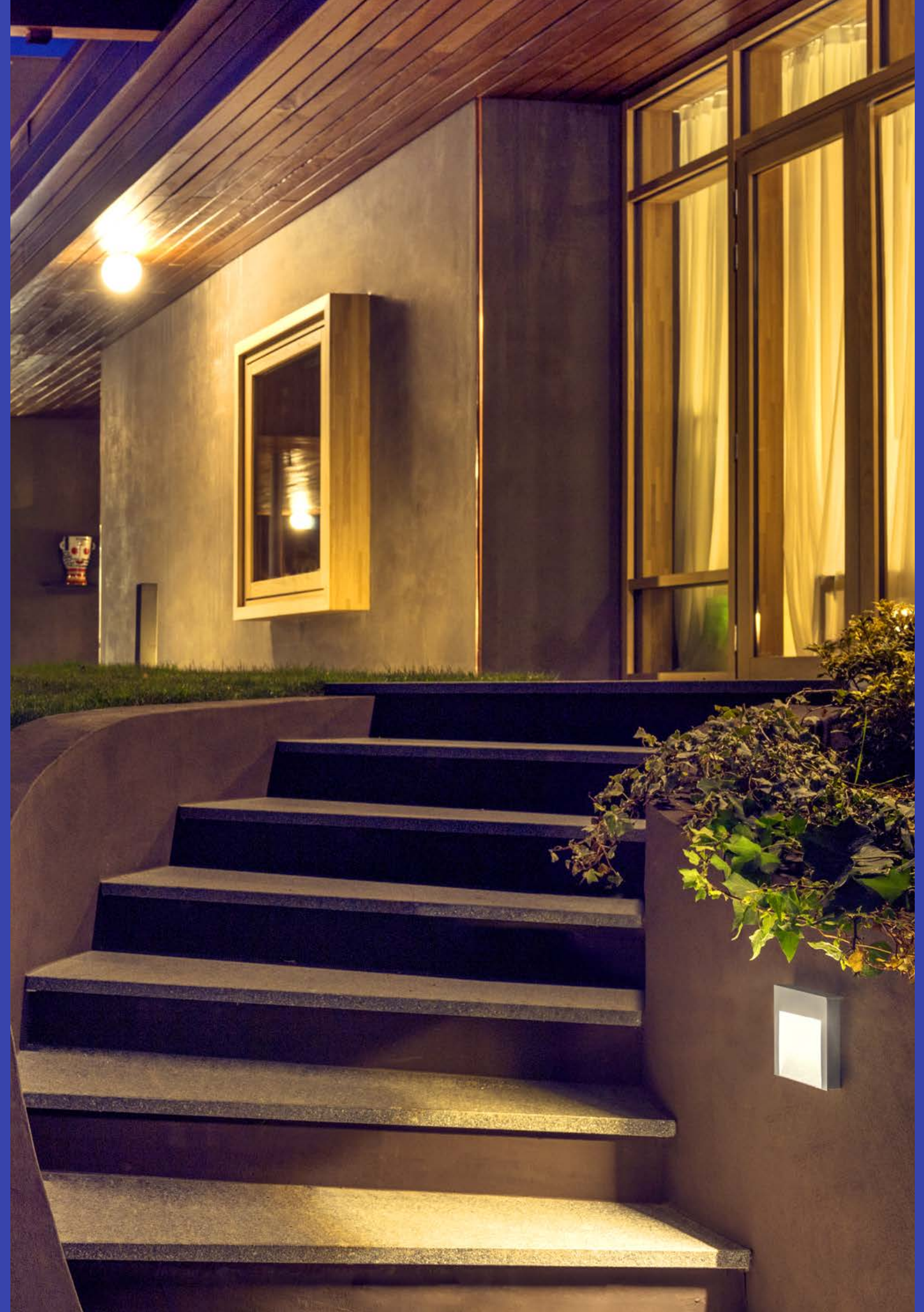


TEAM collection

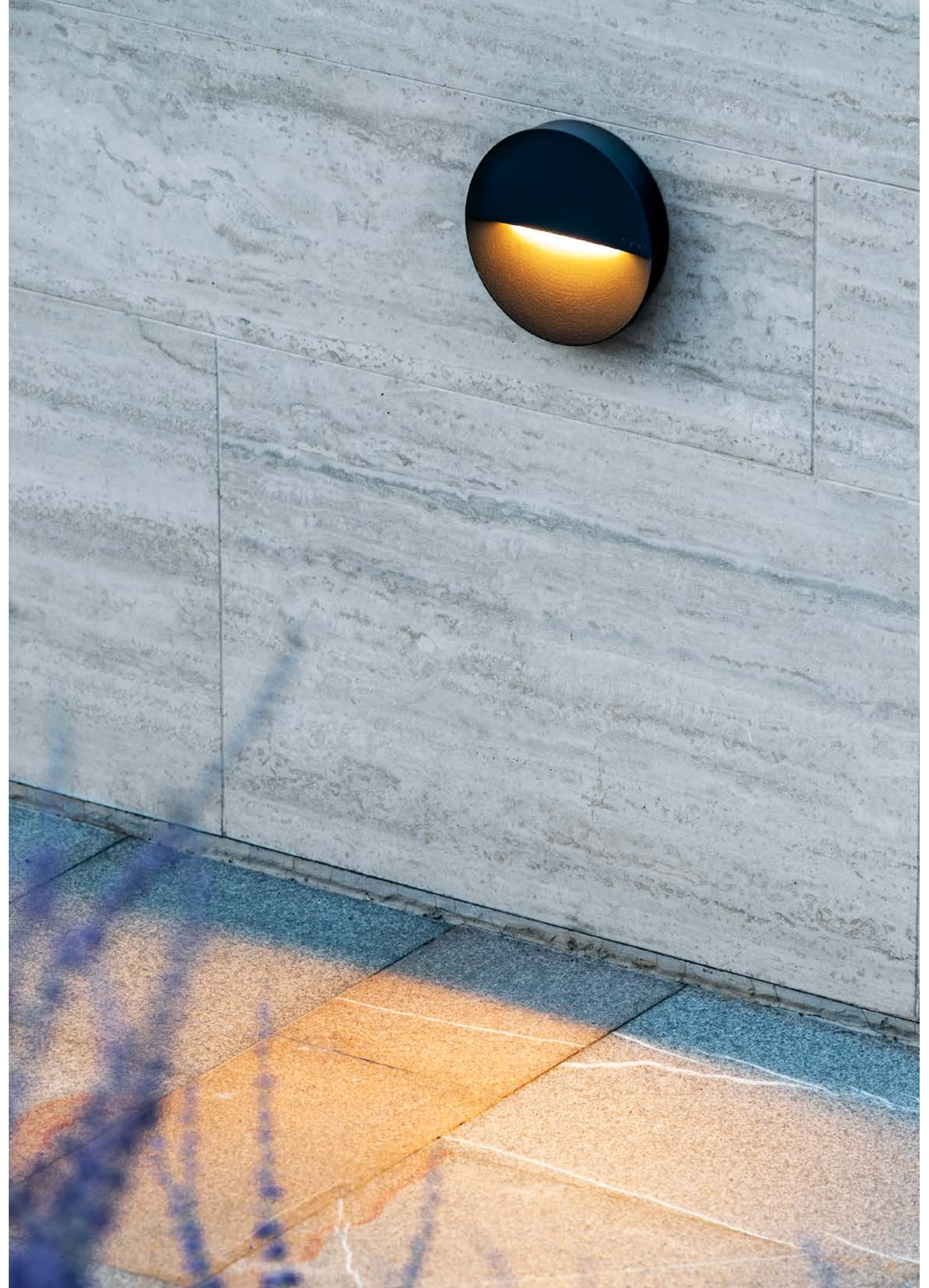


wall recessed step light bollard



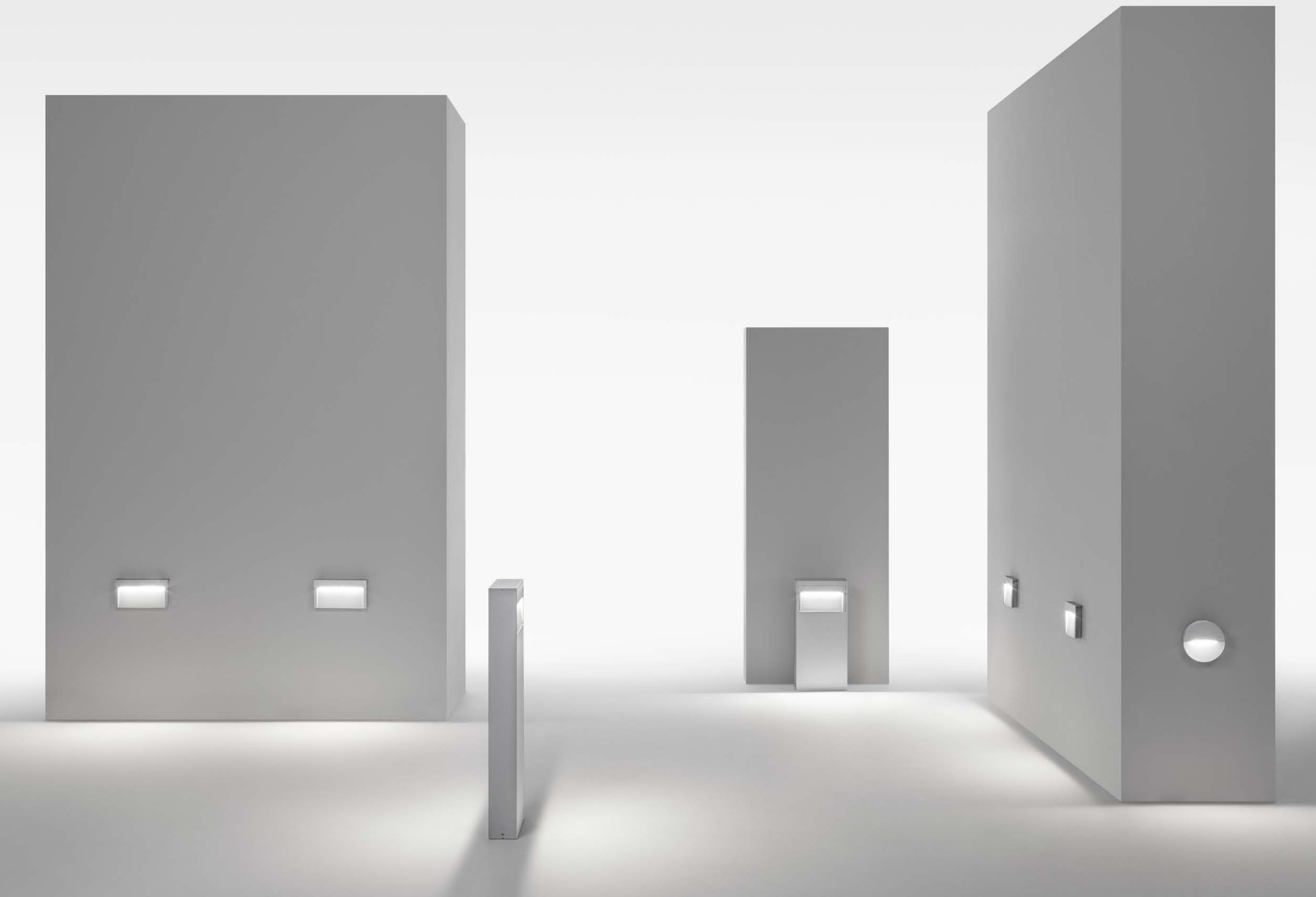
step light

Wall mounted step marker with great elegance and ability to play with the environment light when switched off, due to the side winglets that draw the profile. Available in three different shapes (square, rectangular and round) and with specifically engineered optical system to have the widest opening beam. Team can be powered by a cable from the wall or can be composed in series by connecting elements with an external line. The product is available as a bollard, with single and double emission.



step light





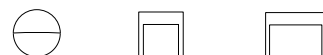
collection

wall recessed IP66
round: IK 09
other versions: IK 08

step light 2 mm transparent methacrylate diffuser

ø 160 mm
140 x 140 mm
260 x 140 mm

IP68 connector included

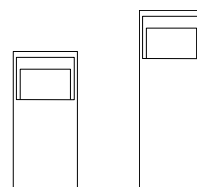


bollard IP66
IK 08

2 mm transparent methacrylate diffuser

280 x 102 x h. 600 mm
280 x 102 x h. 900 mm

IP68 connector included



wall recessed / step light

ø 160 mm
140 x 140 mm
260 x 140 mm



WHITE LED

3000K CRI>80
220-240V 50/60Hz ⊕
TRIAC dimmable

2700K / 4000K
available on request

→ round



8W | 410 lm (*)
asymmetrical



765 cd/klm

→ square



8W | 395 lm (*)
asymmetrical



765 cd/klm

→ rectangular



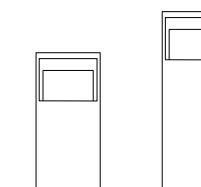
17,5W | 890 lm (*)
asymmetrical



810 cd/klm

bollard

280 x 102 x h. 600 mm
280 x 102 x h. 900 mm



WHITE LED

3000K CRI>80
220-240V 50/60Hz ⊕
TRIAC dimmable

2700K / 4000K
available on request

→ h. 600 mm single emission



17,5W | 890 lm (*)
asymmetrical



810 cd/klm

→ h. 600 mm double emission



35W | 1780 lm (*)
asymmetrical



405 cd/klm

→ h. 900 mm single emission



17,5W | 890 lm (*)
asymmetrical



810 cd/klm

→ h. 900 mm double emission



35W | 1780 lm (*)
asymmetrical



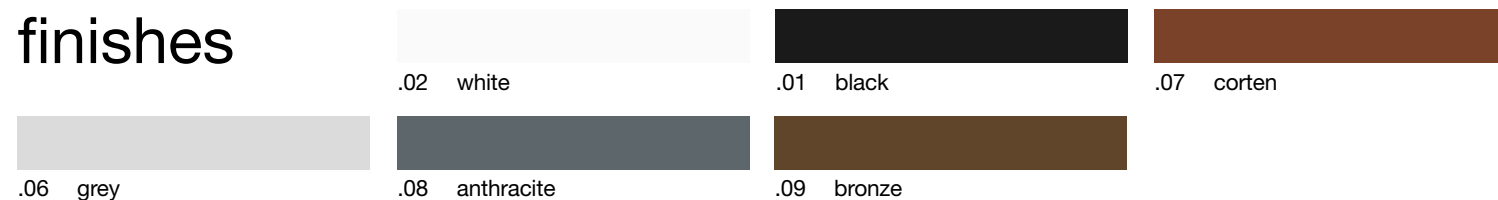
405 cd/klm

details

Front frame and back cover in die-cast aluminium with very low copper content. A4 stainless steel screws, wall fixing bracket in painted stainless steel. No visible screws. High luminous efficiency diffusing PMMA lens. This allows to have a high interdistance installation between several fixtures while maintaining uniform illumination. Operating at mains voltage, IP68 connector included. The product is subjected to galvanic anodizing treatment divided into distinct phases: mechanical satin finishing, surface degreasing, anodic oxidation and finally fixing. Subsequently the product is painted by performing a double pass in-line process, which allows you to generate a single thick protective layer which then generates barrier against atmospheric agents and UV rays. This allows to achieve corrosion resistance performance in salt spray.

standard finishes

on request finishes



(*) Real Data