

Un classico che non passa mai di moda, lo scaldasalviette Ellipsis\_B è particolarmente adatto ad ambienti raffinati.



Ellipsis B, altezza 1620 mm, larghezza 500 mm, Bruno Tabacco

## Caratteristiche costruttive

radiatore scaldasalviette in acciaio con elementi orizzontali a tubi ellittici 50x25 mm  
collettori laterali rotondi con diametro 30 mm  
filettature estremità collettore 1/2" Gas destra  
pressione di esercizio massima ammessa 4 bar  
temperatura di esercizio massima ammessa 95°C

## Dotazione di serie

4 attacchi per fissaggio a muro regolabili in tinta con il radiatore  
valvola sfiato da 1/2"

## Certificazioni



## Plus



## Dati tecnici

Modello	Profondità (mm)	Altezza (mm)	Larghezza (mm)	Interasse (mm)	Peso (kg)	Capacità (lt)	$\Delta t=50^{\circ}\text{C}$ (kcal/h)	$\Delta t=50^{\circ}\text{C}$ (Watt)	$\Delta t=40^{\circ}\text{C}$ (Watt)	$\Delta t=30^{\circ}\text{C}$ (Watt)	$\Delta t=20^{\circ}\text{C}$ (Watt)	Esponente	Funz. misto (Watt)
840 12 tubi 1 intervalli	53,0	840	400	350	7,20	2,60	294,2	342,0	264,0	189,0	118,0	1,159	300
840 12 tubi 1 intervalli	53,0	840	500	450	8,40	3,00	388,3	452,0	349,0	250,0	156,0	1,160	400
840 12 tubi 1 intervalli	53,0	840	600	550	9,60	3,40	452,2	526,0	406,0	291,0	181,0	1,161	400
840 12 tubi 1 intervalli	53,0	840	750	700	11,40	3,90	575,7	669,0	516,0	370,0	231,0	1,162	700
1200 16 tubi 2 intervalli	53,0	1200	400	350	9,70	3,50	381,8	444,0	339,0	239,0	146,0	1,212	400
1200 16 tubi 2 intervalli	53,0	1200	500	450	11,30	4,00	495,4	576,0	441,0	312,0	192,0	1,200	400
1200 16 tubi 2 intervalli	53,0	1200	600	550	12,90	4,60	549,5	674,0	517,0	367,0	227,0	1,188	700
1200 16 tubi 2 intervalli	53,0	1200	750	700	15,30	5,30	732,7	852,0	656,0	469,0	292,0	1,170	700
1620 21 tubi 3 intervalli	53,0	1620	400	350	12,80	4,70	503,1	585,0	445,0	313,0	190,0	1,227	400
1620 21 tubi 3 intervalli	53,0	1620	500	450	14,90	5,40	632,1	735,0	560,0	395,0	241,0	1,215	700
1620 21 tubi 3 intervalli	53,0	1620	600	550	17,00	6,00	708,6	824,0	630,0	445,0	273,0	1,204	700
1620 21 tubi 3 intervalli	53,0	1620	750	700	20,20	7,10	871,2	1.013,0	777,0	552,0	341,0	1,187	1000
1860 25 tubi 3 intervalli	53,0	1860	400	350	15,10	5,50	598,6	696,0	529,0	372,0	226,0	1,227	700
1860 25 tubi 3 intervalli	53,0	1860	500	450	17,60	6,30	752,5	875,0	672,0	478,0	296,0	1,182	700
1860 25 tubi 3 intervalli	53,0	1860	600	550	20,10	7,10	843,7	981,0	755,0	538,0	334,0	1,176	1000
1860 25 tubi 3 intervalli	53,0	1860	750	700	23,90	8,30	1.037,2	1.206,0	930,0	665,0	414,0	1,167	1000

(\*) Grazie alle elevate prestazioni dei radiatori Ellipsis\_B, il  $\Delta t$  ideale per la progettazione a bassa temperatura è 30°C

Per  $\Delta t$  diversi da 50°C utilizzare la formula:  $Q=Q_n (\Delta t / 50)^n$

**Dotazione di serie**

- 4 attacchi per fissaggio a muro regolabili in tinta con il radiatore • valvola sfiato da 1/2"

## Colori e finiture

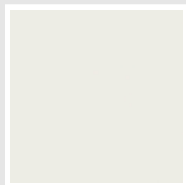
### STANDARD



**Bianco Standard**

Cod. 01

### CLASSIC



**Bianco Edelweiss**

Cod. 34



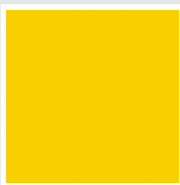
**Avorio - RAL 1013**

Cod. 02



**Beige Cream**

Cod. 26



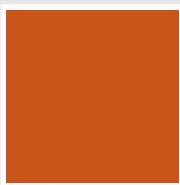
**Giallo - RAL 1021**

Cod. 04



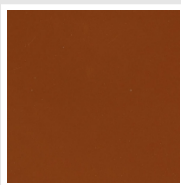
**Giallo Melone -  
RAL 1028**

Cod. E7



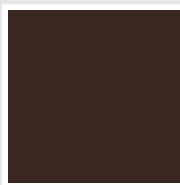
**Arancio - RAL 2004**

Cod. 17



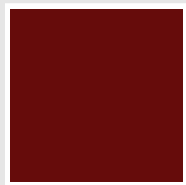
**Marrone Ruggine -  
RAL 8004**

Cod. E1



**Marrone - RAL 8017**

Cod. 09



**Amaranto - RAL  
3003**

Cod. 06



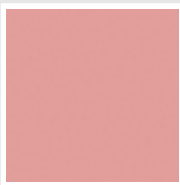
**Rosso - RAL 3000**

Cod. 05



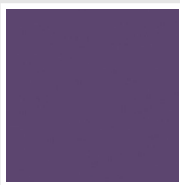
**Rosso Fragola -  
RAL 3018**

Cod. Y3



**Rosa - RAL 3015**

Cod. R2



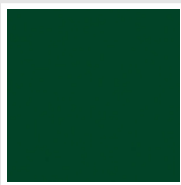
**Lilla Bluastro - RAL  
4005**

Cod. R3



**Porpora Traffico -  
RAL 4006**

Cod. R6



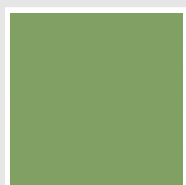
**Verde Bosco - RAL  
6005**

Cod. 19



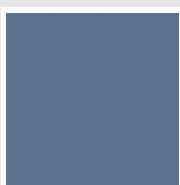
**Verde Erba - RAL  
6018**

Cod. N3



**Verde Salvia - RAL  
6021**

Cod. E6



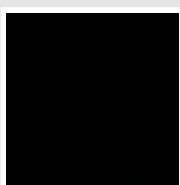
**Blu Pastello - RAL  
5024**

Cod. G7



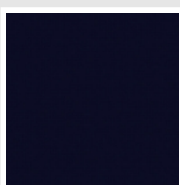
**Grigio Manhattan**

Cod. 03



**Nero - RAL 9005**

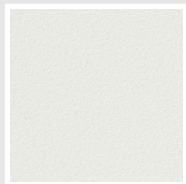
Cod. 10



**Deep Blue**

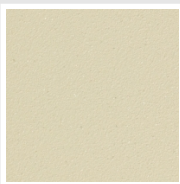
Cod. 2F

### SPECIAL



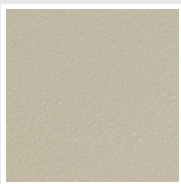
**Bianco Perla**

Cod. 16



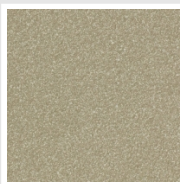
**Quartz 1**

Cod. 1C



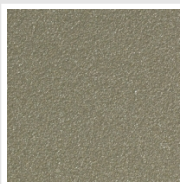
**Sablé**

Cod. Y4



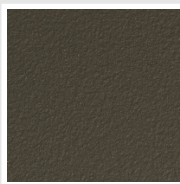
**Quartz 2**

Cod. 2C



**Sunstone**

Cod. 2D



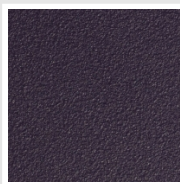
**Bruno Tabacco**

Cod. 1B



**Flame Red**

Cod. 7D



**Purple Blue**

Cod. 1D



**Azurite 3**  
Cod. 6C

**Grigio Medio**  
Cod. 4D

**Grigio Titanio  
Metallizzato - RAL  
9023**  
Cod. L3

**Grigio Perla**  
Cod. L6

**Nero Grafite**  
Cod. 18

**Grigio Quarzo**  
Cod. 31

**Nero Satinato**  
Cod. 30

**Bianco Opaco**  
Cod. J8



**Nero Opaco**  
Cod. K1

**Agave**  
Cod. 9N

**Blu Baltico**  
Cod. 1P

**Ghiaccio**  
Cod. 3P

**Blu Colomba  
Opaco - RAL 5014**  
Cod. 4P

**Grigio Chiaro  
Opaco**  
Cod. 8N

**Grigio Cenere - Ral  
7021**  
Cod. G1

**Grigio Martellato**  
Cod. 32



**Rame Martellato**  
Cod. J4

## RAL



**Altri colori RAL (previa fattibilità)**  
Cod. ALTRIRAL

I colori rappresentati in questa cartella non sono da considerarsi impegnativi. I diversi processi tecnologici di verniciatura ed i materiali utilizzati per la realizzazione possono non avere una perfetta corrispondenza cromatica con il prodotto consegnato. L'azienda Irsap si riserva la facoltà di apportare in qualsiasi momento tutte le modifiche necessarie per il miglioramento del prodotto.