

Raffinato Termoarredo che racchiude in sé tutte le peculiarità tecniche e formali caratterizzato da una forte personalità, grazie all'importante cornice arrotondata rifinita a mano, Novo Cult rappresenta il richiamo contemporaneo allo stile della tradizione. Disponibile in 4 altezze e 3 larghezze. Con l'inserimento della resistenza elettrica (optional) può funzionare anche nei periodi in cui l'impianto è spento.



Novo Cult, altezza 1567 mm, larghezza 500 mm, Nero Satinato

Caratteristiche costruttive

radiatore scaldasalviette in acciaio con elementi orizzontali a tubi tondi di diametro 25 mm

collettori laterali a sezione semiovale 50x36,5 mm

filettature estremità collettore e attacchi centrali 50 mm da 1/2"

Gas destra

pressione di esercizio massima ammessa 6 bar

temperatura di esercizio massima ammessa 95°C

Dotazione di serie

4 attacchi per fissaggio a muro regolabili in tinta con il radiatore

valvola sfiato

Certificazioni



Plus



Dati tecnici

Modello	Profondità (mm)	Altezza (mm)	Larghezza (mm)	Interasse (mm)	Peso (kg)	Capacità (lt)	$\Delta t=50^{\circ}\text{C}$ (kcal/h)	$\Delta t=50^{\circ}\text{C}$ (Watt)	$\Delta t=40^{\circ}\text{C}$ (Watt)	$\Delta t=30^{\circ}\text{C}$ (Watt)	$\Delta t=20^{\circ}\text{C}$ (Watt)	Esponente	Funz. misto (Watt)
01													
807 15 tubi 1 intervallo	49,0	807	450	406	7,80	5,60	336,0	391,0	297,0	209,0	127,0	1,226	400
807 15 tubi 1 intervallo	49,0	807	500	456	8,40	6,10	370,0	430,0	327,0	229,0	139,0	1,229	400
807 15 tubi 1 intervallo	49,0	807	600	556	9,60	7,00	436,0	507,0	385,0	270,0	163,0	1,236	400
1207 23 tubi 2 intervalli	49,0	1207	450	406	11,00	8,00	479,0	557,0	420,0	292,0	175,0	1,262	400
1207 23 tubi 2 intervalli	49,0	1207	500	456	11,80	8,60	525,0	610,0	460,0	320,0	192,0	1,260	400
1207 23 tubi 2 intervalli	49,0	1207	600	556	13,50	9,90	617,0	718,0	542,0	378,0	227,0	1,258	700
1567 30 tubi 3 intervalli	49,0	1567	450	406	13,90	10,10	622,0	723,0	545,0	379,0	227,0	1,265	700
1567 30 tubi 3 intervalli	49,0	1567	500	456	14,90	10,80	683,0	794,0	599,0	416,0	249,0	1,264	700
1567 30 tubi 3 intervalli	49,0	1567	600	556	16,90	12,40	805,0	936,0	706,0	491,0	294,0	1,263	1000
1807 36 tubi 3 intervalli	49,0	1807	450	406	16,00	11,70	724,0	842,0	636,0	443,0	266,0	1,258	700
1807 36 tubi 3 intervalli	49,0	1807	500	456	17,20	12,60	798,0	928,0	701,0	489,0	294,0	1,255	1000
1807 36 tubi 3 intervalli	49,0	1807	600	556	19,60	14,40	945,0	1.099,0	831,0	580,0	349,0	1,250	1000
05													
807 15 tubi 1 intervallo	49,0	807	450	50	7,80	5,60	336,0	391,0	297,0	209,0	127,0	1,226	400
807 15 tubi 1 intervallo	49,0	807	500	50	8,40	6,10	370,0	430,0	327,0	229,0	139,0	1,229	400
807 15 tubi 1 intervallo	49,0	807	600	50	9,60	7,00	436,0	507,0	385,0	270,0	163,0	1,236	400

1207 23 tubi 2 intervalli	49,0	1207	450	50	11,00	8,00	479,0	557,0	420,0	292,0	175,0	1,262	400
1207 23 tubi 2 intervalli	49,0	1207	500	50	11,80	8,60	525,0	610,0	460,0	320,0	192,0	1,260	400
1207 23 tubi 2 intervalli	49,0	1207	600	50	13,50	9,90	617,0	718,0	542,0	378,0	227,0	1,258	700
1567 30 tubi 3 intervalli	49,0	1567	450	50	13,90	10,10	622,0	723,0	545,0	379,0	227,0	1,265	700
1567 30 tubi 3 intervalli	49,0	1567	500	50	14,90	10,80	683,0	794,0	599,0	416,0	249,0	1,264	700
1567 30 tubi 3 intervalli	49,0	1567	600	50	16,90	12,40	805,0	936,0	706,0	491,0	294,0	1,263	1000
1807 36 tubi 3 intervalli	49,0	1807	450	50	16,00	11,70	724,0	842,0	636,0	443,0	266,0	1,258	700
1807 36 tubi 3 intervalli	49,0	1807	500	50	17,20	12,60	798,0	928,0	701,0	489,0	294,0	1,255	1000
1807 36 tubi 3 intervalli	49,0	1807	600	50	19,60	14,40	945,0	1.099,0	831,0	580,0	349,0	1,250	1000

(*) Grazie alle elevate prestazioni dei radiatori Novo Cult, il Δt ideale per la progettazione a bassa temperatura è 30°C

Per Δt diversi da 50°C utilizzare la formula: $Q=Q_n (\Delta t / 50)^n$

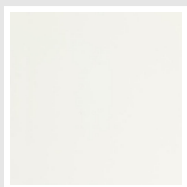
Irsap garantisce la tenuta idraulica e la verniciatura dei radiatori NOVO CULT per 10 anni, a partire dalle vendite dell'anno 2009.

Dotazione di serie

- 4 attacchi per fissaggio a muro regolabili in tinta con il radiatore
- valvola sfiato

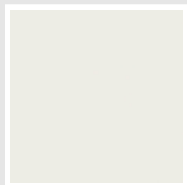
Colori e finiture

STANDARD

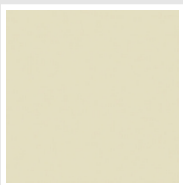


Bianco Standard
Cod. 01

CLASSIC



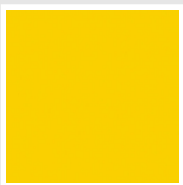
Bianco Edelweiss
Cod. 34



Avorio - RAL 1013
Cod. 02



Beige Cream
Cod. 26



Giallo - RAL 1021
Cod. 04



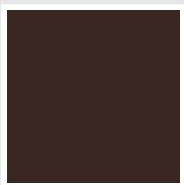
**Giallo Melone -
RAL 1028**
Cod. E7



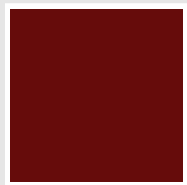
Arancio - RAL 2004
Cod. 17



**Marrone Ruggine -
RAL 8004**
Cod. E1



Marrone - RAL 8017
Cod. 09



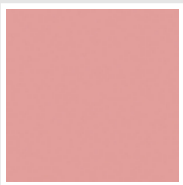
**Amaranto - RAL
3003**
Cod. 06



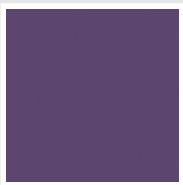
Rosso - RAL 3000
Cod. 05



**Rosso Fragola -
RAL 3018**
Cod. Y3



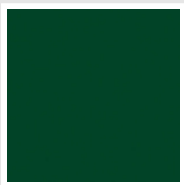
Rosa - RAL 3015
Cod. R2



**Lilla Bluastro - RAL
4005**
Cod. R3



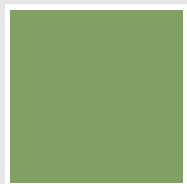
**Porpora Traffico -
RAL 4006**
Cod. R6



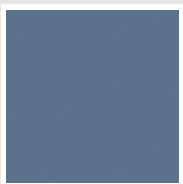
**Verde Bosco - RAL
6005**
Cod. 19



**Verde Erba - RAL
6018**
Cod. N3



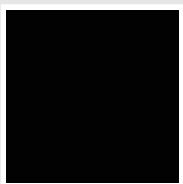
**Verde Salvia - RAL
6021**
Cod. E6



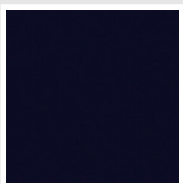
**Blu Pastello - RAL
5024**
Cod. G7



Grigio Manhattan
Cod. 03

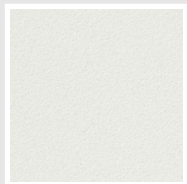


Nero - RAL 9005
Cod. 10

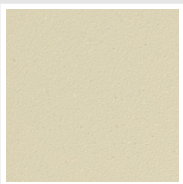


Deep Blue
Cod. 2F

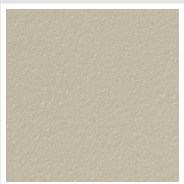
SPECIAL



Bianco Perla
Cod. 16



Quartz 1
Cod. 1C



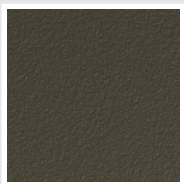
Sablé
Cod. Y4



Quartz 2
Cod. 2C



Sunstone
Cod. 2D



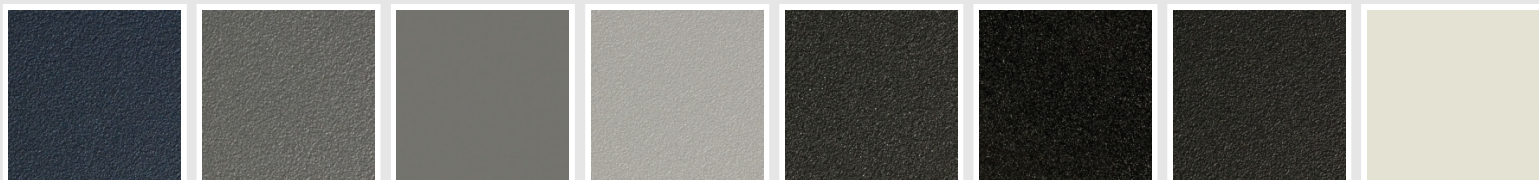
Bruno Tabacco
Cod. 1B



Flame Red
Cod. 7D



Purple Blue
Cod. 1D



Azurite 3
Cod. 6C

Grigio Medio
Cod. 4D

**Grigio Titanio
Metallizzato - RAL
9023**
Cod. L3

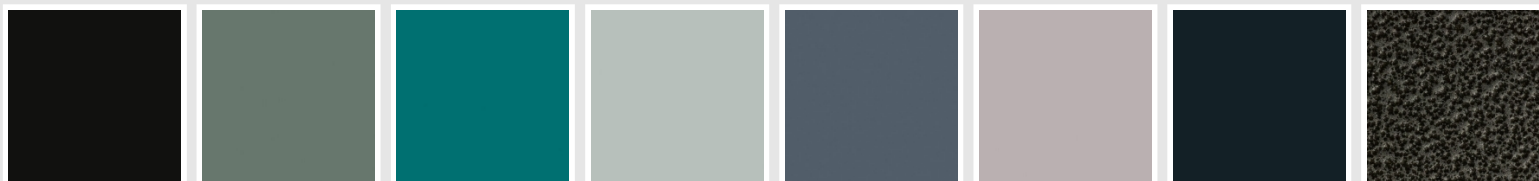
Grigio Perla
Cod. L6

Nero Grafite
Cod. 18

Grigio Quarzo
Cod. 31

Nero Satinato
Cod. 30

Bianco Opaco
Cod. J8



Nero Opaco
Cod. K1

Agave
Cod. 9N

Blu Baltico
Cod. 1P

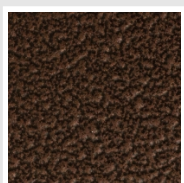
Ghiaccio
Cod. 3P

**Blu Colomba
Opaco - RAL 5014**
Cod. 4P

**Grigio Chiaro
Opaco**
Cod. 8N

**Grigio Cenere - Ral
7021**
Cod. G1

Grigio Martellato
Cod. 32



Rame Martellato
Cod. J4

RAL



Altri colori RAL (previa fattibilità)
Cod. ALTRIRAL

I colori rappresentati in questa cartella non sono da considerarsi impegnativi. I diversi processi tecnologici di verniciatura ed i materiali utilizzati per la realizzazione possono non avere una perfetta corrispondenza cromatica con il prodotto consegnato. L'azienda Irsap si riserva la facoltà di apportare in qualsiasi momento tutte le modifiche necessarie per il miglioramento del prodotto.