

# Arpa18\_2 Orizzontale

Arpa18\_2 Orizzontale rappresenta una moderna estetica che si integra in qualsiasi ambiente. Lo stile di Arpa18\_2 si completa nella modulare funzionalità.



Arpa18 2, orizzontale, 20 elementi, altezza 2020 mm, larghezza 364 mm, Nero Grafite

## Caratteristiche costruttive

collettori a sezione circolare diametro 30 mm  
elementi in lamiera d'acciaio diametro 18 mm  
filettature estremità collettore 1/2" Gas destra  
pressione di esercizio massima ammessa: 10 bar  
temperatura di esercizio massima ammessa: 95°C

## Dotazione di serie

sistemi di fissaggio al muro con viti e tasselli  
tappo cieco da 1/2" con copri tappo  
valvola sfiato da 1/2"

## Certificazioni



## Plus



## Dati tecnici

Modello	Profondità (mm)	Lunghezza (mm)	Interasse (mm)	Peso (kg)	Capacità (lt)
520	62,0	520	470	0,54	0,23
550	62,0	550	500	0,57	0,24
650	62,0	650	600	0,66	0,28
670	62,0	670	620	0,68	0,29
700	62,0	700	650	0,71	0,30
750	62,0	750	700	0,75	0,32
850	62,0	850	800	0,84	0,36
870	62,0	870	820	0,86	0,37
920	62,0	920	870	0,91	0,39
1220	62,0	1220	1170	1,18	0,50
1520	62,0	1520	1470	1,46	0,62
1820	62,0	1820	1770	1,73	0,74
2020	62,0	2020	1970	1,92	0,82
2220	62,0	2220	2170	2,10	0,90
2520	62,0	2520	2470	2,37	1,01

(\*) Grazie alle elevate prestazioni dei radiatori Arpa18\_2 Orizzontale, il  $\Delta t$  ideale per la progettazione a bassa temperatura è 30°C

Per  $\Delta t$  diversi da 50°C utilizzare la formula:  $Q=Q_n (\Delta t / 50)^n$

### Dotazione di serie

- sistemi di fissaggio al muro con viti e tasselli • tappo cieco da 1/2" con copri tappo • valvola sfiato da 1/2"

Numero Elementi      4    6    8    10    12    14    16    18    20    22    24    26    28    30    32    34    36    38    40    42    44    46    48    50

Resa a mt lineare Kcal/h a  $\Delta t=50^\circ\text{C}$  272,7368,9465,1561,3657,5753,7849,9946,1 1.024,31.096,21.160,71.221,81.275,91.324,71.368,21.402,71.440,71.470,11.495,41.567,11.638,91.710,71.782,51.854

Resa a mt lineare Watt a  $\Delta t=50^\circ\text{C}$  317,1429,0540,8652,7764,5876,4988,21.100,11.191,01.274,61.349,71.420,71.483,61.540,31.590,91.631,01.675,21.709,41.738,81.822,31.905,71.989,22.072,62.155

Resa a mt lineare Watt a $\Delta t=40^{\circ}\text{C}$	242,4327,7412,9497,6585,5674,0756,9834,8	903,1	965,8	1.022,01.075,01.122,41.165,11.203,21.232,81.265,31.290,31.311,61.377,01.437,21.504,61.567,51.63
Resa a mt lineare Watt a $\Delta t=30^{\circ}\text{C}$	171,4231,6291,6350,8415,0480,5536,6584,9	632,2	675,5	714,1 750,4 783,4 813,0 839,4 859,4 881,2 897,9 911,9 959,6 998,9 1.049,81.093,41.13
Resa a mt lineare Watt a $\Delta t=20^{\circ}\text{C}$	105,2142,0178,6214,3255,5298,2330,5354,2	382,4	408,0	430,8 452,2 471,9 489,6 505,3 516,8 529,2 538,6 546,4 576,7 598,2 632,1 658,1 684
Esponente modifica	1,2041,2071,2091,2151,1961,1771,1951,237	1,240	1,243	1,246 1,249 1,250 1,251 1,252 1,254 1,258 1,260 1,263 1,256 1,264 1,251 1,252 1,25

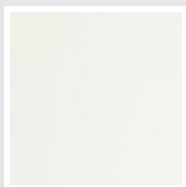
## Rese a batteria

Altezza (mm)	N° Elementi	520	550	650	670	700	750	850	870	920	1220	1520	1820	2020	2220	2520
109	4	$Watt = 165$ $W =$	174	206	212	222	238	270	276	292	387	482	577	641	704	799
163	6	$Watt = 223$ $W =$	236	279	287	300	322	365	373	395	523	652	781	866	952	1081
217	8	$Watt = 281$ $W =$	297	352	362	379	406	460	471	498	660	822	984	1092	1201	1363
271	10	$Watt = 339$ $W =$	359	424	437	457	490	555	568	600	796	992	1188	1318	1449	1645
325	12	$Watt = 398$ $W =$	420	497	512	535	573	650	665	703	933	1162	1391	1544	1697	1927
379	14	$Watt = 456$ $W =$	482	570	587	613	657	745	762	806	1069	1332	1595	1770	1946	2208
433	16	$Watt = 514$ $W =$	544	642	662	692	741	840	860	909	1206	1502	1799	1996	2194	2490
487	18	$Watt = 572$ $W =$	605	715	737	770	825	935	957	1012	1342	1672	2002	2222	2442	2772
541	20	$Watt = 619$ $W =$	655	774	798	834	893	1012	1036	1096	1453	1810	2168	2406	2644	3001
595	22	$Watt = 663$ $W =$	701	828	854	892	956	1083	1109	1173	1555	1937	2320	2575	2830	3212
649	24	$Watt = 702$ $W =$	742	877	904	945	1012	1147	1174	1242	1647	2052	2456	2726	2996	3401
703	26	$Watt = 739$ $W =$	781	923	952	994	1066	1208	1236	1307	1733	2159	2586	2870	3154	3580
757	28	$Watt = 771$ $W =$	816	964	994	1039	1113	1261	1291	1365	1810	2255	2700	2997	3294	3739
811	30	$Watt = 801$ $W =$	847	1001	1032	1078	1155	1309	1340	1417	1879	2341	2803	3111	3419	
865	32	$Watt = 827$ $W =$	875	1034	1066	1114	1193	1352	1384	1464	1941	2418	2895	3214		
919	34	$Watt = 848$ $W =$	897	1060	1093	1142	1223	1386	1419	1501	1990	2479	2968	3295		
973	36	$Watt = 871$ $W =$	921	1089	1122	1173	1256	1424	1457	1541	2044	2546	3049	3384		
1027	38	$Watt = 889$ $W =$	940	1111	1145	1197	1282	1453	1487	1573	2085	2598	3111			
1081	40	$Watt = 904$ $W =$	956	1130	1165	1217	1304	1478	1513	1600	2121	2643	3165			
1135	42	$Watt = 948$ $W =$	1002	1184	1221	1276	1367	1549	1585	1676	2223	2770				
1189	44	$Watt = 991$ $W =$	1048	1239	1277	1334	1429	1620	1658	1753	2325	2897				

Altezza (mm)	N° Elementi		520	550	650	670	700	750	850	870	920	1220	1520	1820	2020	2220	2520
1243	46	Watt = W =	1034	1094	1293	1333	1392	1492	1691	1731	1830	2427	3024				
1297	48	Watt = W =	1078	1140	1347	1389	1451	1554	1762	1803	1907	2529					
1351	50	Watt = W =	1121	1186	1401	1445	1509	1617	1833	1876	1984	2630					
1405	52	Watt = W =	1165	1232	1456	1500	1568	1680	1904	1948	2060	2732					
1459	54	Watt = W =	1208	1278	1510	1556	1626	1742	1975	2021	2137	2834					
1513	56	Watt = W =	1251	1324	1564	1612	1685	1805	2045	2094	2214	2936					
1567	58	Watt = W =	1295	1369	1618	1668	1743	1867	2116	2166	2291						
1621	60	Watt = W =	1338	1415	1673	1724	1801	1930	2187	2239	2367						

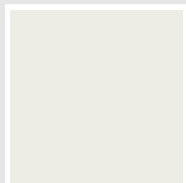
## Colori e finiture

### STANDARD



**Bianco Standard**  
Cod. 01

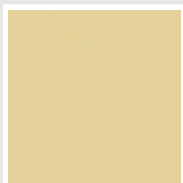
### CLASSIC



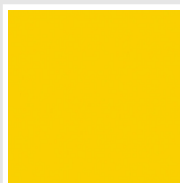
**Bianco Edelweiss**  
Cod. 34



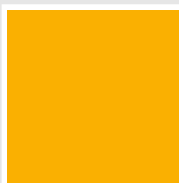
**Avorio - RAL 1013**  
Cod. 02



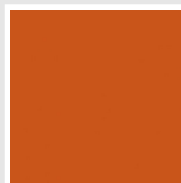
**Beige Cream**  
Cod. 26



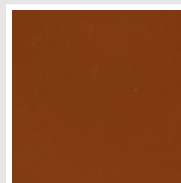
**Giallo - RAL 1021**  
Cod. 04



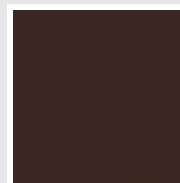
**Giallo Melone -  
RAL 1028**  
Cod. E7



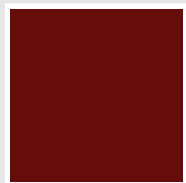
**Arancio - RAL 2004**  
Cod. 17



**Marrone Ruggine -  
RAL 8004**  
Cod. E1



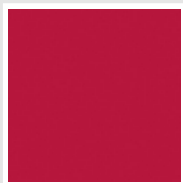
**Marrone - RAL 8017**  
Cod. 09



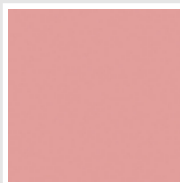
**Amaranto - RAL  
3003**  
Cod. 06



**Rosso - RAL 3000**  
Cod. 05



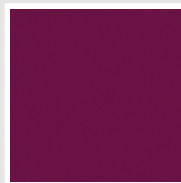
**Rosso Fragola -  
RAL 3018**  
Cod. Y3



**Rosa - RAL 3015**  
Cod. R2



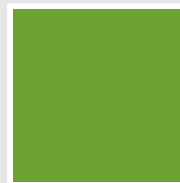
**Lilla Bluastro - RAL  
4005**  
Cod. R3



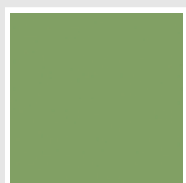
**Porpora Traffico -  
RAL 4006**  
Cod. R6



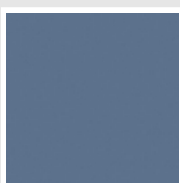
**Verde Bosco - RAL  
6005**  
Cod. 19



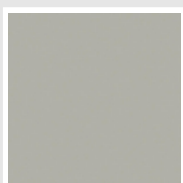
**Verde Erba - RAL  
6018**  
Cod. N3



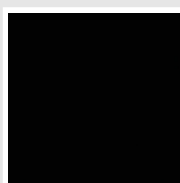
**Verde Salvia - RAL  
6021**  
Cod. E6



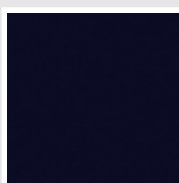
**Blu Pastello - RAL  
5024**  
Cod. G7



**Grigio Manhattan**  
Cod. 03

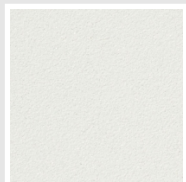


**Nero - RAL 9005**  
Cod. 10

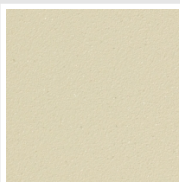


**Deep Blue**  
Cod. 2F

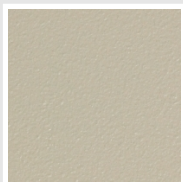
### SPECIAL



**Bianco Perla**  
Cod. 16



**Quartz 1**  
Cod. 1C



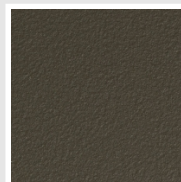
**Sablé**  
Cod. Y4



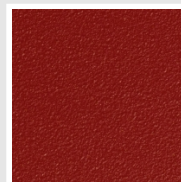
**Quartz 2**  
Cod. 2C



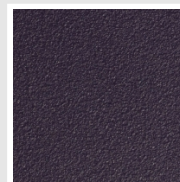
**Sunstone**  
Cod. 2D



**Bruno Tabacco**  
Cod. 1B



**Flame Red**  
Cod. 7D



**Purple Blue**  
Cod. 1D



**Azurite 3**  
Cod. 6C

**Grigio Medio**  
Cod. 4D

**Grigio Titanio  
Metallizzato - RAL  
9023**  
Cod. L3

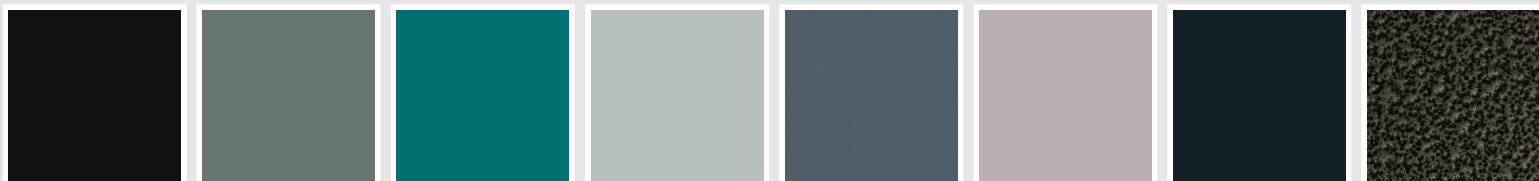
**Grigio Perla**  
Cod. L6

**Nero Grafite**  
Cod. 18

**Grigio Quarzo**  
Cod. 31

**Nero Satinato**  
Cod. 30

**Bianco Opaco**  
Cod. J8



**Nero Opaco**  
Cod. K1

**Agave**  
Cod. 9N

**Blu Baltico**  
Cod. 1P

**Ghiaccio**  
Cod. 3P

**Blu Colomba  
Opaco - RAL 5014**  
Cod. 4P

**Grigio Chiaro  
Opaco**  
Cod. 8N

**Grigio Cenere - Ral  
7021**  
Cod. G1

**Grigio Martellato**  
Cod. 32



**Rame Martellato**  
Cod. J4

## RAL



**Altri colori RAL (previa fattibilità)**  
Cod. ALTRIRAL

I colori rappresentati in questa cartella non sono da considerarsi impegnativi. I diversi processi tecnologici di verniciatura ed i materiali utilizzati per la realizzazione possono non avere una perfetta corrispondenza cromatica con il prodotto consegnato. L'azienda Irsap si riserva la facoltà di apportare in qualsiasi momento tutte le modifiche necessarie per il miglioramento del prodotto.