

Filo completa la proposta degli scaldasalviette Irsap. Oggetto funzionale che sostituisce gli elementi d'arredo negli ambienti della casa e dell'ufficio. La sua linea snella e accattivante è caratterizzata dal diametro proporzionato dei tubi. Filo è disponibile in 4 altezze e 3 larghezze. Con l'inserimento della resistenza elettrica (optional) può funzionare anche nei periodi in cui l'impianto è spento.



Filo, altezza 1709 mm, larghezza 616 mm, Rosso - RAL 3000

### **Caratteristiche costruttive**

radiatore scaldasalviette in acciaio con elementi orizzontali a tubi  
tondi di diametro 12 mm  
collettori laterali a sezione ovoidale 45x30 mm  
filettature estremità collettore 1/2" Gas destra  
pressione di esercizio massima ammessa 4 bar  
temperatura di esercizio massima ammessa 95°C

### **Dotazione di serie**

4 attacchi infratubo bianchi per Filo bianco o 4 attacchi  
infratubo cromati per Filo colorato  
valvola sfiato da 1/2"

## Certificazioni



## Plus



## Dati tecnici

Modello	Profondità (mm)	Altezza (mm)	Larghezza (mm)	Interasse (mm)	Peso (kg)	Capacità (lt)	$\Delta t=50^{\circ}\text{C}$ (kcal/h)	$\Delta t=50^{\circ}\text{C}$ (Watt)	$\Delta t=40^{\circ}\text{C}$ (Watt)	$\Delta t=30^{\circ}\text{C}$ (Watt)	$\Delta t=20^{\circ}\text{C}$ (Watt)	Esponente	Funz. misto (Watt)
785 31 tubi 1 intervallo	30,0	785	466	406	6,00	2,20	324,0	376,0	286,0	201,0	123,0	1,223	400
785 31 tubi 1 intervallo	30,0	785	516	456	6,50	2,30	357,0	415,0	316,0	222,0	135,0	1,223	400
785 31 tubi 1 intervallo	30,0	785	616	556	7,50	2,50	424,0	493,0	375,0	264,0	161,0	1,223	400
1203 46 tubi 2 intervalli	30,0	1203	466	406	9,00	3,30	479,0	556,0	422,0	295,0	178,0	1,241	400
1203 46 tubi 2 intervalli	30,0	1203	516	456	9,80	3,50	528,0	614,0	466,0	326,0	197,0	1,241	400
1203 46 tubi 2 intervalli	30,0	1203	616	556	11,20	3,80	627,0	730,0	553,0	387,0	234,0	1,241	700
1467 54 tubi 3 intervalli	30,0	1467	466	406	10,80	4,00	569,0	661,0	501,0	351,0	212,0	1,241	700
1467 54 tubi 3 intervalli	30,0	1467	516	456	11,60	4,20	627,0	730,0	553,0	387,0	234,0	1,241	700
1467 54 tubi 3 intervalli	30,0	1467	616	556	13,30	4,60	744,0	865,0	656,0	459,0	277,0	1,241	700
1709 65 tubi 3 intervalli	30,0	1709	466	406	12,80	4,70	679,0	789,0	595,0	414,0	248,0	1,263	700
1709 65 tubi 3 intervalli	30,0	1709	516	456	13,80	5,00	749,0	871,0	657,0	457,0	274,0	1,263	700
1709 65 tubi 3 intervalli	30,0	1709	616	556	15,90	5,40	890,0	1.034,0	780,0	543,0	325,0	1,263	1000

(\*) Grazie alle elevate prestazioni dei radiatori Filo, il  $\Delta t$  ideale per la progettazione a bassa temperatura è  $30^{\circ}\text{C}$

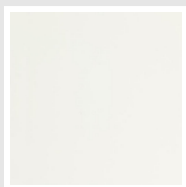
Per  $\Delta t$  diversi da  $50^{\circ}\text{C}$  utilizzare la formula:  $Q=Q_n (\Delta t / 50)^n$

### Dotazione di serie

- 4 attacchi infratubo bianchi per Filo bianco o 4 attacchi infratubo cromati per Filo colorato • valvola sfiato da 1/2"

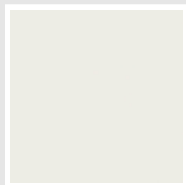
## Colori e finiture

### STANDARD



**Bianco Standard**  
Cod. 01

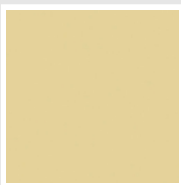
### CLASSIC



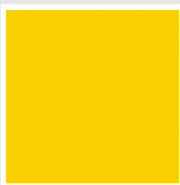
**Bianco Edelweiss**  
Cod. 34



**Avorio - RAL 1013**  
Cod. 02



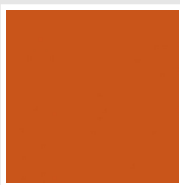
**Beige Cream**  
Cod. 26



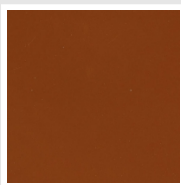
**Giallo - RAL 1021**  
Cod. 04



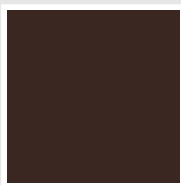
**Giallo Melone -  
RAL 1028**  
Cod. E7



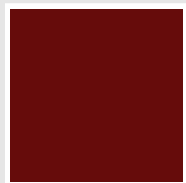
**Arancio - RAL 2004**  
Cod. 17



**Marrone Ruggine -  
RAL 8004**  
Cod. E1



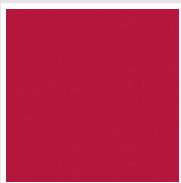
**Marrone - RAL 8017**  
Cod. 09



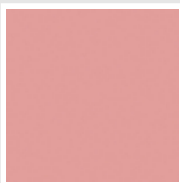
**Amaranto - RAL  
3003**  
Cod. 06



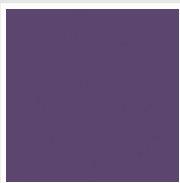
**Rosso - RAL 3000**  
Cod. 05



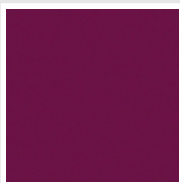
**Rosso Fragola -  
RAL 3018**  
Cod. Y3



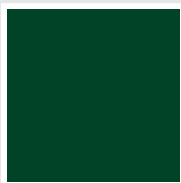
**Rosa - RAL 3015**  
Cod. R2



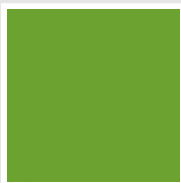
**Lilla Bluastro - RAL  
4005**  
Cod. R3



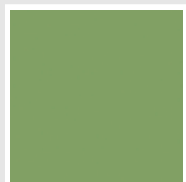
**Porpora Traffico -  
RAL 4006**  
Cod. R6



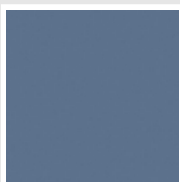
**Verde Bosco - RAL  
6005**  
Cod. 19



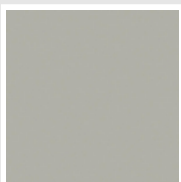
**Verde Erba - RAL  
6018**  
Cod. N3



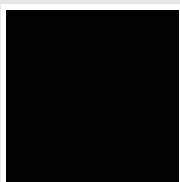
**Verde Salvia - RAL  
6021**  
Cod. E6



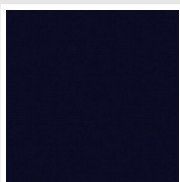
**Blu Pastello - RAL  
5024**  
Cod. G7



**Grigio Manhattan**  
Cod. 03

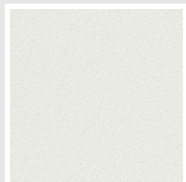


**Nero - RAL 9005**  
Cod. 10

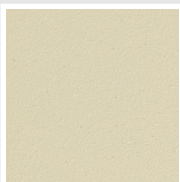


**Deep Blue**  
Cod. 2F

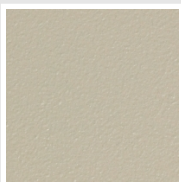
### SPECIAL



**Bianco Perla**  
Cod. 16



**Quartz 1**  
Cod. 1C



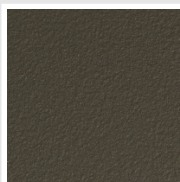
**Sablé**  
Cod. Y4



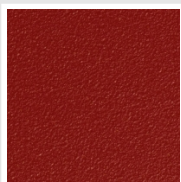
**Quartz 2**  
Cod. 2C



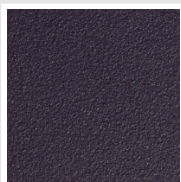
**Sunstone**  
Cod. 2D



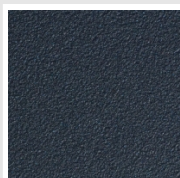
**Bruno Tabacco**  
Cod. 1B



**Flame Red**  
Cod. 7D



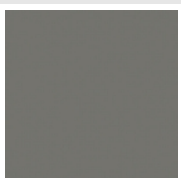
**Purple Blue**  
Cod. 1D



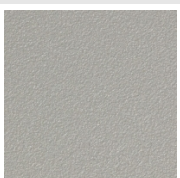
**Azurite 3**  
Cod. 6C



**Grigio Medio**  
Cod. 4D



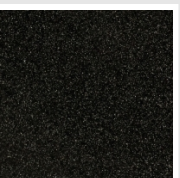
**Grigio Titanio  
Metallizzato - RAL  
9023**  
Cod. L3



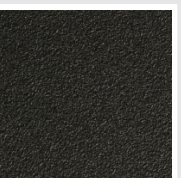
**Grigio Perla**  
Cod. L6



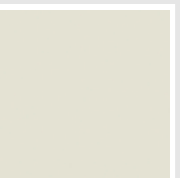
**Nero Grafite**  
Cod. 18



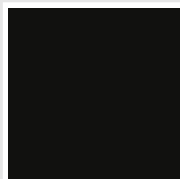
**Grigio Quarzo**  
Cod. 31



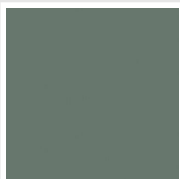
**Nero Satinato**  
Cod. 30



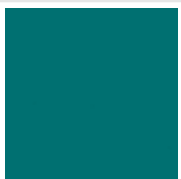
**Bianco Opaco**  
Cod. J8



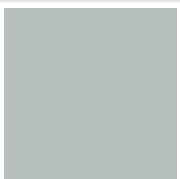
**Nero Opaco**  
Cod. K1



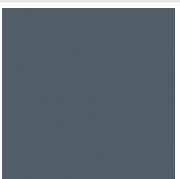
**Agave**  
Cod. 9N



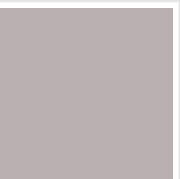
**Blu Baltico**  
Cod. 1P



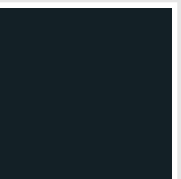
**Ghiaccio**  
Cod. 3P



**Blu Colomba  
Opaco - RAL 5014**  
Cod. 4P



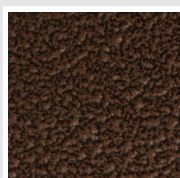
**Grigio Chiaro  
Opaco**  
Cod. 8N



**Grigio Cenere - Ral  
7021**  
Cod. G1



**Grigio Martellato**  
Cod. 32



**Rame Martellato**  
Cod. J4

## RAL



**Altri colori RAL (previa fattibilità)**  
Cod. ALTRIRAL

I colori rappresentati in questa cartella non sono da considerarsi impegnativi. I diversi processi tecnologici di verniciatura ed i materiali utilizzati per la realizzazione possono non avere una perfetta corrispondenza cromatica con il prodotto consegnato. L'azienda Irsap si riserva la facoltà di apportare in qualsiasi momento tutte le modifiche necessarie per il miglioramento del prodotto.